



Beetham Christingle and Crib Service

The traditional Christingle and Crib Service was held on Christmas Eve with a record attendance of over 260 people in church. The service began with Ava, from Beetham School, singing the first verse of *Once in Royal David's City* from the pulpit. The story of the nativity was then told by the Revd Andrew Norman, accompanied by music, and as carols were sung children displayed each of the crib figures made by prisoners of war from the Bela Camp presented in 1946. After the nativity scene was complete, Revd Andrew explained the meaning of the different elements of a Christingle. All the candles were lit and the lights turned off in a reminder of the celebration of Christ's birth.

Grateful thanks go to Revd Andrew for leading the service, to Geoff Field for playing the organ, to Ava for singing so beautifully, to all who prepared the Christingles, to Booths Milnthorpe for donating the oranges, to those who cleaned and prepared the church and stewarded the service, and to all who gave donations raising money for the work of the Children's Society.



BOOTH'S
THE GOOD GROCERS



Beetham Church Shrove Tuesday Supper & Quiz Night Tuesday 17th February

7 for 7.30pm in the
Heron Corn Mill Barn



Cottage Pie, Pancakes, & Wine included

Tickets £15

from Dianne (015395 62648)

Soup Lunches in Church 20th January & 24th February from 12pm to 1.30pm



Hot mugs of soup & scones
Tea and coffee also available
Donations welcomed in aid of
the fabric repair appeal

THE GATEWAY

PARISH MAGAZINE OF
ST MICHAEL & ALL ANGELS, BEETHAM

NEW YEAR 2026

www.beethamstmichaelandallangels.co.uk

It's All About Service

The English language is probably the greatest gift this Country has given to the World, closely followed, in my opinion, by the game of Cricket. One of the joys of the English language is the fact that one word can have so many meanings. Take Service for example, which is defined in the Oxford English Dictionary as the act of helping or doing work for another. When you hear that word, what comes into your mind? It could be something as mundane as a tea service or it could be the action which starts a game of tennis, or the work carried out to your car when you take it for its periodic check. It could



be one of the Emergency Services, such as the Fire Brigade, Ambulance Service or Police Force.

Another possibility is the National Health Service which helps to keep us well, or the Civil Service who are employed to implement the policies of the Government, well that's the theory anyway.

For many people it will be Church Services, such as those held regularly in our beautiful Church in Beetham. There is even a Wild Service Tree, an indigenous tree, which is

quite rare, but there is a specimen locally in Eaves Wood, Silverdale.

Then we have the Service Industry, mainly Banking and Insurance, which is vital for this Country making a huge contribution to the Nation's finances. I'm sure you can think of many more examples.

Service can be Voluntary or Compulsory. Examples of the former are delivering 'Meals on Wheels', the Samaritans, or working for any Charity. Even the Royal National Lifeboat Institution is manned by volunteers. However some Services are compulsory, for instance, Jury Service, where 12 Jurors, guided by a Magistrate or Judge, decide upon the guilt or innocence of an accused person. An interesting service to be involved in if you are called to serve.

Another compulsory service was National Service which finished in the early 1960s. Young men were required to serve for two years in one of the Armed Services. My particular generation was involved in National Service and I served in the Royal Air Force. During our basic training, or 'Square bashing' as it's known, we had a regular weekly Service with the Station Padre, a Squadron Leader, a kindly man who endeared himself to us by referring to us as 'lads'. We were only 18 or 19. The individuals who instructed us in Foot and Rifle drill called us many names, but 'lads' was not one of them!

As we enter a New Year, it is appropriate that we give thanks to all the current members of our Armed Forces for their Service to the Nation.

It is said that people today are not as generous giving their time as they used to be. I do not agree with that, so many people give freely of their time to help others but you never hear about their efforts. One receives a great deal of satisfaction giving service to others. This fact is summed up rather neatly in a statement made by the prominent Indian Politician, Mahatma Gandhi who said '*to find yourself, first you must lose yourself in the service of others*'.

Colin Clarke



Letter from The Revd Andrew Norman

Dear friends,

The beginning of a new calendar year offers opportunity both for careful recollection and purposeful planning. A time to look back on the year that has gone by, perhaps with a mixture of thankfulness and penitence, and in doing so to seek God's guidance and grace for the year that is now to be.

Such reflections are not, of course, reserved to the rituals and rhythms associated with the beginning of the year, but as the earth begins another journey around the sun we are faced with all the opportunities and challenges that the coming three hundred and sixty-five days of 2026 will bring.

And whilst it's understandable for us to want to know, ideally with clarity and certainty, what the future will hold, to begin a new year is - in one sense - to step out into the unknown. It encourages us to shift our perspective and thus to consider what it will mean for us to make the most of the time that is given to us, how we will use for good the 8,760 hours and the 525,600 minutes that will be given to us in the year to come.

It's no wonder then that January becomes a time of resolving to do things differently, and in our contemporary age has quite easily become a time for trying to make promises that often prove a challenge to keep; believing that somehow, we need to change certain parts of ourselves by committing to a programme of self-improvement. Of course, there's nothing wrong (at all) with making resolutions, of trying to do better, of seeking to live more humbly, generously, thankfully or lovingly, but it is misguided to think we can commit, resolve or attempt to do this in our own strength or power.

In his now famous work, The Screwtape Letters, C.S. Lewis says this as he muses on what approaching time looks like in fellowship with God:

'He therefore, I believe, wants them to attend chiefly to two things, to eternity itself, and to that point of time which they call the Present. For the Present is the point at which time touches eternity.'

The great mystery and claim of the Christian faith, manifested in the life of Jesus Christ, is that the lives we are given, and are privileged to lead, are not accidental or inconsequential.

We are not the random result of scientific forces, but rather the beloved creation of a faithful God, whose purposes are good, whose love is eternal, and in whose light, we see light. An identity and belonging which gives our lives - regardless of whether we're contending with weal or woe - value, meaning and purpose. A knowledge and awareness, given by faith, that allows us to acknowledge that our experience in the present is nothing less than a window onto eternity, that place where the Lord can reveal himself afresh to us if we have but eyes to see and ears to hear.

For it is in the present, in the gift of each day, that we are all invited to open our lives, with all their complexity and confusion, with all their hopes and fears to the one whose image and likeness we are each summoned to share. To the God in whom all that we do, think and are begun, continued and ended.

May this precious truth support and encourage you, and yours, throughout the coming year.

With every good wish and prayer for the Lord's blessing,

As ever,

Andrew



Discover your place in God's story...

Wednesday 25th February,
4th, 11th, 18th, 25th March
1st, 15th, 22nd, 29th April & 6th May

A chance for us to learn (over ten weeks, during Lent and then after Easter) from the Bible together as we explore Saint Paul's Letter to the Romans, one of the most influential and significant letters ever written.

Please, if you would like to, bring some lunch!



The Romans Course has been prepared by The Bible Society.

St Michael & All Angels Beetham Church Services for January & February 2026

Date	Time	Service	Date	Time	Service
Sun 4th Jan	11am	Parish Eucharist	Sun 1st Feb	11am	Parish Eucharist
	6pm	BCP* Evensong		6pm	Candlemas Evensong
Weds 7th Jan	10am	BCP Holy Communion	Weds 4th Feb	10am	BCP Holy Communion
Sun 11th Jan	11am	Parish Eucharist	Sun 8th Feb	11am	Parish Eucharist
	6pm	BCP Evensong		6pm	BCP Evensong
Sun 18th Jan	11am	Parish Eucharist	Sun 15th Feb	11am	Parish Eucharist
	6pm	Epiphany Carol Service		6pm	BCP Evensong
Sun 25th Jan	11am	Parish Eucharist	Weds 18th Feb	7pm	Ash Wednesday Eucharist
	6pm	BCP Evensong	Sun 22nd Feb	11am	Parish Eucharist
				6pm	BCP Evensong

Please see weekly pewsheet or website for further details

*Book of Common Prayer

Church Repair Fund

We are very grateful for your help in supporting our building appeal to repair the church fabric. If you are able to do so, we invite you to help us by recycling your clean aluminium drinks cans, tin foil, pie cases, and blister packs. To check if an item is aluminium, simply test it with a magnet - aluminium will not respond. You can kindly drop off your contributions in the marked black bin round the back of the church. If you have a larger donation such as unwanted items like old ladders etc, please don't hesitate to reach out to Deborah at 07899702476.

Donations to the repair appeal can be made via the QR code or by going to our website.



The Salvation Army Christmas Appeal

A big thank you to all who donated toys or supported the village carol singing. A wonderful total of £450 was raised for the work of the Kendal Salvation Army



Please join the churches of the Kent Estuary in a

Mission Community Gathering

10.30am, Sunday 8th March

in St Thomas' Church

Milnthorpe

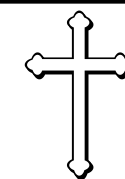
Please note there will be no service at Beetham that morning but Evensong will be at 6pm as usual

Funeral

Friday 12th December

Luke Andrew Adams

May he rest in peace



St Michael and All Angels, Beetham



Ash Wednesday

We mark the first day of Lent with a sung service of Holy Communion with the imposition of ashes.

Wednesday 18th February at 7.00pm

'Keep, O keep us, Saviour dear, ever constant by your side, that with you we may appear at the eternal Eastertide.'

REST & RESET

Christian meditation
A moment to press pause II

St James Church Arnside

6:15 - 7:00PM

JAN TUES 6TH MAR TUES 3RD MAY TUES 5TH JUL TUES 7TH

Contact: revhannahwallace@gmail.com 01524 449 055

REST & RESTORE

A time of prayer for healing & wholeness

St James Church Arnside

6:15 - 7:00PM

FEB TUES 10TH APR TUES 14TH JUN TUES 2ND



One Body, One Spirit

A Service for the Week of Prayer for Christian Unity

Sunday 18th January 2026

at 3.00pm

Our Lady of Lourdes Roman Catholic Church

"There is one body and one Spirit, just as you were called to the one hope of your calling"
Ephesians 4:4



"AND NOW WE WELCOME THE NEW YEAR,
FULL OF THINGS THAT HAVE NEVER BEEN"
Rainer Maria Rilke

HAPPY NEW YEAR! Did you all have a good time?
We certainly did musically. It just flew by did it
not and undoubtedly this December will be here before we know it. Should we bother to take the
decorations down, or go all Miss Havisham and simply cover them up? That aside and off my chest
let's carry on.

"TAKE A LEAP OF FAITH AND BEGIN THIS WONDEROUS NEW YEAR IN BELIEVING"
Sarah Ban Breathnach

As a growing band we quite often have to take a few leaps. We do test ourselves at times, but it is
always worth it. Especially at Christmas time, music reaches in. Stirs up the memories. Everyone
despite their protestations that Christmas music sends them crazy, always ends up humming along.
Musical magic. Everyone gets something from music. It is not all about being highly polished, it is
about being happy with what you are doing. That is the magic that pulls everyone together. We can
make that feeling spread across the year. It is like musical road salt, it can help to stop you slipping
and sliding, keeping you steady during those inclement times and unplanned journeys .

Goodness! Tess has delved into her psychological Christmas stocking and binged away on sentimental
treats! But not put on a pound! So make 2026 a musical year. You will always be welcomed should you
pop into St Michael and All Angels Church on Saturday mornings. We are very lucky to have such a
lovely practice space and we would like to share it with you.


"YOU ARE NEVER TOO OLD TO SET ANOTHER GOAL OR TO DREAM A NEW DREAM"
C S Lewis

For further information contact Tess on 07725580095.

PS. Always happy to perform at your events!

St Michael and All Angels, Beetham

Epiphany Carol Service




Sunday 18th January
at 6.00pm

A service to reflect on how God's goodness and
glory is revealed and manifested to the world at
Epiphany, praying that we might know the light
and grace of Christ in our lives always.

St Michael and All Angels, Beetham

Candlemas

Sunday 2nd February




Candlemas Eucharist
at 11.00am

Candlemas Choral Evensong
at 6.00pm

We bring our celebrations of the 'long' Christmas
season to a close with our keeping of Candlemas,
asking that we may know the light and glory of
God now and always.





Advent & Christmastide Celebrations

The busy preparations for Christmas began with the School Winter Fair and the Church Grand
Hamper raffle which raised over £710 for the church appeal. The start of Advent was marked
with a moving Advent Carol Service and the lighting of the first candle on the Advent wreath,
and the indoor and outdoor nativity cribs. The indoor Christmas tree needed the usual strong
team of volunteers, but was a perfect fit! This was followed by the switch-on of the
Brightening Beetham lights on 5th December.

As Advent moved towards Christmas, carol singing around Slackhead and Beetham involved
an intrepid group braving the rain over two nights. The church handbell ringers played carols
at Hartland House and Croftside. Glorious Christmas flower arrangements filled the church.
The Festival of Nine Lessons and Carols had a record attendance of 119, with wonderful music
from the choir led by Geoff Field and accompanied by Ken Forster, and Beetham School pupil
Ava poignantly singing the unaccompanied solo first verse of *Once in Royal David's City*.
Thank you to Revd Andrew, Revd Hannah, and all who contributed to such a wonderful
season of celebration, culminating in Midnight Mass and the Christmas Day Eucharist.



Brightening Beetham Thank You!!

Due to the wonderful sponsors and dedicated team, Beetham has been
Brightened once again. This growing Community Event continues to
flourish. Hopefully we can light up even more of the village this year. It
really does lift people especially in these difficult and uncertain times. I
am always in awe and heartened by the generosity of sponsors who
support our community.

Thank you does not seem adequate but it is said with love and gratitude
and in hope that we can call on you again. I will be touch with you all
but here are a few mentions:-

Beetham Community and the Gang on erection and maintenance of the
trees and lights; the lovely tree Sponsors; Beetham Nurseries; Beetham
Parish Council; Beetham Sports Committee; Leslie at The Old Post
Office; and Beetham Community Band for the indoor church tree

Also huge thanks to everyone who helped Father Christmas and his
friends in the Salvation Army. He also sends his best wishes and if we
could help again this year....

You are all wonderful. Should you wish to know more and get involved
(honestly great fun) or have ideas to share, please feel free to call.
With love and on behalf of everyone, Tess (07725 580095)






School Corner



This term concluded with some truly wonderful Christmas festivities for all the children.

Classes 2 and 3 visited the Globe Theatre in Blackpool for an amazing performance of Cinderella. Children were full of excitement afterwards, sharing comments such as:

"I loved seeing the dancers swinging through the air!"

"The scenery and real rain were incredible!"

"I loved seeing Cinderella because it made me laugh!"

Class 1 enjoyed a festive trip to Lancaster University to watch The Snowman, followed by a fabulous visit to Barton Grange to see Santa's Grotto. The children made their own stuffed toys with the elves and then had their photos taken with Santa.

A wonderful Christmas Lunch brought the whole school together to celebrate the festive season, complete with crackers handmade by the children. Christmas parties were a joyous occasion, filled with games and a special visit from a guest who brought a book for every child.

The highlight of the season was, as always, the Nativity play. This year, Class 1 and Preschool performed It's a Baby! Daphne retold the Nativity in her own words: "Mary and Joseph had to travel to Bethlehem. They had to look for a house. They found a stable; they had a baby in the stable. We sang 'It's a Baby' and 'Hallelujah' because the baby was special." Polly "enjoyed the songs" and Edie loved that "mummy, daddy and grandma came to watch." A huge thank you to all the children and adults who made the Nativity such a wonderful experience.

Our term concluded with a musical Carol Concert where children from each class shared handbells, boomwhackers, ocarinas and songs with the congregation. Together, we sang carols that gently walked us through the Nativity story.

Best wishes, Abi Johnson



Could you serve as a... FOUNDATION GOVERNOR

Why do we need you?

Beetham Church of England Primary School has **two vacancies for Foundation Governors**. We hope that it could be you....

What would you do?

Foundation Governors, like all the other governors, help to develop a vision and strategy for the school. They oversee how the school spends its money and make sure the Headteacher is doing their job. Foundation Governors are appointed by the foundation that has a close connection to the school. At Beetham, this is the Church of England. Foundation Governors ensure that the school's foundational vision and ethos is maintained and enabled to flourish.

What is the commitment?

Governors meet for a couple of hours in the late afternoon around 6 times throughout the year. Governors also regularly undertake monitoring visits in school, having opportunity to learn more about different parts of school life and so report on these for the benefit of the whole Governing Body.

Who can do it?

Foundation Governors are nominated by the Parochial Church Council of St Michael and All Angels, Beetham, and anyone is eligible providing that they are supportive of and in sympathy with the Christian foundation of our School. You don't need any formal training or an educational background, just a desire and willingness to help support the life and flourishing of our school now and into the future.

How do I find out more?

Please have a word with Father Andrew (a.norman@beetham.cumbria.sch.uk) or Mark, the Chair of Governors (m.ryan@beetham.cumbria.sch.uk) for a conversation or for more information, they will be very grateful to hear from you!

Beetham WI ~ Festive end, plans for beginning 2026



Some members got together in The Wheatsheaf in early December to create Christmas crackers which were added to the beautiful table decorations when we had our Christmas lunch at The Atheneum later in the month. We enjoyed a delicious festive meal produced by Alison Thompson's team and there was plenty of chat as well as fun with 'games' and quizzes. There was also a chance to look back through our Scrapbook to be reminded of the wide variety of things we have done together during the last 2 years since we 'returned' to Beetham.



There is no monthly meeting in January but towards the end of the month some of us will be having lunch out before attending a Kendal College Performance in 'The Box'.

We will be back in The Wheatsheaf for our monthly meeting on Thursday 12th February 2026 at 2pm for a Talk by John Morton entitled 'The Laughter Prescription' – should be 'hilarious'! Guests are very welcome to attend for a small donation which includes tea or coffee.



Later in February some members plan another Pickle Ball session which is enjoyed by all. If you would like more information about our relaxed and friendly WI, do contact our Secretary, Jeanette, at beethamwi@gmail.com

theWI
INSPIRING WOMEN

Parish Coffee Mornings Tuesdays 3rd February & 3rd March 10.30am-12pm in church



Please do join us for refreshments and a chat!
All are very welcome, and feel free to bring a friend. There is no charge but any donations will be gratefully received for our repair appeal

Levens Choir

Come & Sing

JS Bach's St Matthew Passion

Directed by Gawain Glenton

Saturday 31 January 2026

10 - 4.30

Arnside Educational Institute LA5 0DF

£25 for the day, including music hire. Free for students.

Sign up here: <https://www.levenschoir.net/passion>

In March 2027 Levens Choir will be giving two performances of this sublime choral work to mark its first performance 300 years ago. Come and join Levens Choir with their music director, Gawain Glenton, to explore some of the choral sections from this piece.

Tea, coffee and cold drinks will be available all day. Please bring your own lunch – or sample one of the cafes along Arnside promenade.

Music copies will be provided. We will be using the Barenreiter edition and will be singing in German.

For any queries about the day please email:
comeandsing@levenschoir.net



Beetham Parish Council Meetings

Beetham CE School ~
Monday 2nd February at 7pm
Storth Village Church ~
Monday 2nd March at 7pm

Members of the public are welcome to attend. Previous minutes and details of the Councillors can be found on the website at www.beetham-pc.gov.uk



BAKING WITH KATE

Wednesday 28th Jan & 18th Feb, 11am - 4pm

CRAFTING WITH ERIKA

Monday 2nd Feb, 1 - 4pm

CRAFTERNOON

Tuesday 24th Feb, 1 - 4pm

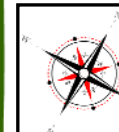
POWSOWDIE

Wednesday 21st Jan & 25th Feb, 11am - 2pm

POETRY CAFE

Wednesday 14th Jan & 11th Feb, 11am - 3.30pm

Heron Corn Mill, Mill Lane, Beetham, LA7 7PQ
015395 64271 - info@heronmill.org - www.heronmill.org



Quest Lecture Group

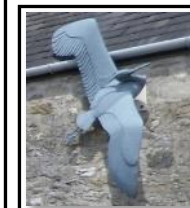
A friendly group, meeting at the
Athenaeum village hall, Leasgill, LA7 7ET

22 Jan ~ Capt Julian Blatchley
'Titanic - the Seaman's View'

26 Feb ~ Prof Ian Hodkinson
'Samuel Haslam of Heversham - Naturalist'

All meetings are on Thursdays, starting at 10:00am. Guest tickets for individual meetings £2.50, tea/coffee included.

Enquiries to Adrian Tayler: aptayler@gmail.com 01539 564030



art
dance
music
film
the HERON theatre

February What's On

Friday 6th Feb
Becoming Mrs Danvers (Drama)

Sunday 8th Feb
Take Wing! Songs About Birds (Music)

Friday 13th Feb
The Roses (Film)

Saturday 14th Feb
Paul Simon & Me - Ben P Williams (Music)

Tuesday 17th Feb
The Fifth Step (National Theatre Live)

Friday 20th Feb
Pottinger & Purhouse On The Road (Poetry)

Sunday 1st March
Encore Opera (Music)

Book tickets online www.theherontheatre.com
email: boxoffice@theherontheatre.com ~ tel: 015395 64283

Evening performances start at 7.30pm. Sunday music 2.30pm.

Refreshments available

The Heron Theatre, Stanley Street, Beetham, LA7 TAS

Heydays
Care & Support Services

Choose the right home care for you & your loved ones.

A local, family-run home care agency, we offer a range of care packages tailored to our clients, including **live-in, dementia** and **palliative care** services.

www.heydayscare.co.uk | 01539 555 685

Beetham Village Facebook
A dedicated facebook group for Beetham village
Search for
"Beetham Village Cumbria"

Kent Estuary
Est. 1979
24 Hours. Travel
Competitive Rates

Local family private hire company founded in 1979

All drivers, male and female, have level 2 nvq in road vehicle passenger driving and are fully licensed with SLDC. We pride ourselves in having a friendly and reliable service

For a quote please contact us on 015395 62917 or 07974 108501

The Gateway deadline

Items for the March edition should be submitted by Monday 23rd February. Please email articles to jenny.marks@btinternet.com. View deadlines online at www.beethamstmichaelandallangels.co.uk

If you would like to join our teams of volunteer folders or distributors please contact Jenny

To advertise, space in all ten issues can cost as low as £33. To book call Jenny on 015395 62559, email jenny.marks@btinternet.com or visit our website

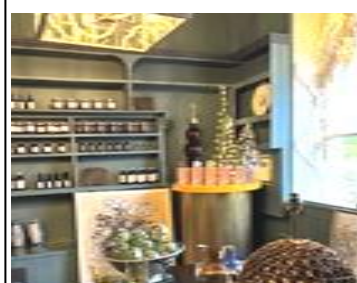
Private Hire Silverdale Arnside and Yealand

0800 132383



www.saycars.co.uk

50 years of 'knowledge', riding and driving our area's roads
Licensed and Regulated by Lancaster City Council



Edith Anice

Leslie welcomes you to her interiors shop and café in the Old Beetham Post Office

Please check shop noticeboard for seasonal shop and café opening times

WOODSIDE WALKS

Dog Walking & Day Care Service



Fully Insured
GPS Collars
10 Yrs Experience
Countryside Walks

Contact Theo on 07880 237033 to discuss your requirements

PARKIN and JACKSON
Monumental Masons

New Memorials
Second Inscriptions, Repaints,
Regilds and Renovations



Visit the showroom on
14 APPLEBY ROAD, KENDAL LA9 6ES
Telephone: 01539 722838
Free estimates & brochure on request
www.parkinandjackson.co.uk
email: info@parkinandjackson.co.uk

HOUGHTONS

HOME IMPROVEMENT CENTRE
Park Road, Milnthorpe
T: 015395 63904

Open 7 days
Trade & Retail

Large stock areas covering
Commercial & DIY Power Tools
Hardware
Electrical & Household Goods
Gardening Tools & Equipment
Gifts & Cards for all occasions

FISHWICKS FUNERAL SERVICE

Established 1935
Beetham Hall Beetham
015395 63108

Independent Family Business
24hr service
www.fishwicksfunerals.co.uk



BEETHAM HALL CREMATORIUM

Established 2017
015395 65363
www.beethamhall.co.uk

MOSSDALE SERVICE STATION



A6, Hale Moss
tel: 01524 781381
Petrol, Car Wash

TEXACO Nisa Store open
6am (Sunday 7am) - 8pm

Wines & Beers, Fresh Produce,
Groceries, Hot & Cold Drinks,
National Lottery



Join The Friends
of Beetham Church

Support our church repair
fundraising by picking up a
form in church or downloading
from our website

PLUGGED IN ELECTRICIANS

Customers first - Transparent pricing
Clear communication
01524 932 524
pluggedinelectricians.co.uk

BOOK COLLECTIONS BOUGHT
or individual items. Will travel to view.
Phone Allithwaite 015395 35125
Mobile 07923521764
P.B.F.A. member

NEIL TAYLOR
Painter, Decorator
& Paperhanger
Tel: 015395 - 64411
Mobile: 07778 - 467521

FOOTCARE AT HOME
Tracey Garrett BSc MInstChp
Nail trimming ~ Ingrown nails
Corns ~ Callus ~ Diabetic foot
Care and advice
For Home Visit tel 07766 167018

A.M.DECORATING
High Class Interior Decorator
All aspects of painting & decorating
Specialist wallpaper hanging
Hand painted kitchen resprays
Furniture spraying
Coving fitting & cornice repairs
Dust free sanding
07951 023 335
52 Hornby Rd, Caton, LA2 9QS
a.m.decorating50@gmail.com

J&R Landscapes
Specialising in fencing, stone walling,
paving, garden rooms, lawns and
water features. Bespoke garden
design and build
Free estimates. Call 07954336176

HIGHGATE VETERINARY CLINIC **01539 721344**
Friendly, caring & professional team
www.highgatevets.com
173 Highgate and Beeson Rd, Kendal

Graham Pooley WINDOW CLEANER
1 Castle Riggs, Kendal
01539 - 721981

IAN BRADSHAW
INTERIOR & EXTERIOR PAINTER & DECORATOR
015395 62089
07968 390396

MARTIN PAINTER & DECORATOR
07881 895909
01524 61834
martin.painting.decorating@gmail.com

Gas & Oil Boiler,
Gas Fire Repairs & Maintenance
015395 - 63562
MARK N. SHAW

Chaplows Heating Services
Boiler Services
GAS OIL LPG
015395 - 63017
07831 - 223140

ageuk SOUTH LAKELAND AGE UK
For lunch club and exercise class details go to
www.ageuk.org.uk/southlakeland/activities-and-events
Helpline : 030 300 30003

The Wheatsheaf
BEETHAM
FOUNDED 1809
www.wheatsheafbeetham.com
stay@wheatsheafbeetham.com
015395 64652

Open
Wednesday
to
Sunday
11am 'til late.
Closed until
21st Jan '26

Flowers for all occasions
Woodlands Nurseries
Crooklands
01539 567273

TONY GIBSON
SPECIALIST IN:
- STONEMASONRY -
- PLASTERING -
- ALL ASPECTS OF BUILDING -
015395 64702
07815 888 564
www.tgibsonbuilderscumbria.co.uk

HAIRSTOP
2b Mainstreet, Milnthorpe, LA77PN
HAIR SALON
015395 63586
www.hairstopmilnthorpe.co.uk

L. M. Baverstock
Ophthalmic Opticians
The Square, Milnthorpe
015395 - 62633

Irene Taylor Hearing
- Specialist hearing aid advice
- Earwax removal by microsuction
- iPhone compatible hearing aids
- Invisible hearing aids
- Hearing protection for shooting, motorcyclists & musicians
- TV & telephone accessories
- Home visits
Salt Pie Lane, Kirkby Lonsdale, LA6 2BH
015242 73589
Est. 1980 ~ Registered with hepc
www.irenetaylorhearing.co.uk

CONTACTS FOR THE PARISH OF ST. MICHAEL AND ALL ANGELS, BEETHAM

Priest-in-Charge	The Revd Andrew Norman	015395 62355	revdabn@gmail.com
Assistant Curate	The Revd Hannah Wallace	01524 449035	revhannahwallace@gmail.com
Lay Minister	Chris Roberts	015395 63019	lainyandchris@aol.com
Lay Minister/Churchwarden	Vivien Stirrup	015395 64320	vstirrup7@aol.com
Churchwarden	John Lomax	015395 62648	j.d.lomax@btinternet.com
PCC Treasurer			
Safeguarding Officer	Andrew Skinner	07362 593076	beetham-safeguarding@gmail.com
Gateway Editor	Jenny Marks	015395 62559	jenny.marks@btinternet.com
Beetham CE School	Abi Johnson	015395 62515	head@beetham.cumbria.sch.uk

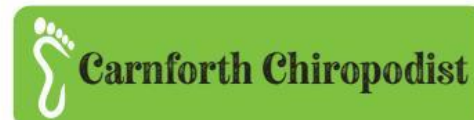
Please do be in touch with Andrew you would like to receive the parish email, if there is any support or encouragement he can offer, if you would have any questions about services church life or the Christian faith, or if you would like anyone or anything remembered in prayer.



Church Websites

For information about our church and parish, What's On, and church videos please visit our website at www.beethamstmichaelandallangels.co.uk. Full colour versions of this and past editions of The Gateway are also available online. If you would like to receive an email copy please contact jenny.marks@btinternet.com

For more details of the Kent Estuary Mission Community visit the website at www.kentestuarymissioncommunity.com



"Helping you and your feet go a long way"

Comprehensive professional, friendly and effective chiropody & podiatry services. Expert help in our welcoming treatment room, conveniently situated in Carnforth

Routine footcare & hygiene issues • Long term health conditions
Resolving pain and posture problems • Nail surgery

Web: www.carnforthchiropodist.co.uk

Mobile: 07725 300290 Email: carol@carnforthchiropodist.co.uk

Address: 28 Langdale Road, Carnforth, Lancashire LA5 9AU