



Flower
Festival
2026

THE GATEWAY

Parish Magazine of
St Michael & All Angels, Beetham

June 2026

“The pageant of the river bank had marched steadily along, unfolding itself in scene-pictures that succeeded itself in stately procession. Purple loosestrife arrived early, shaking luxuriant locks along the edge of the mirror whence its own face laughed back at it. Willow-herb, tender and wistful, like a pink sunset-cloud was not slow to follow. Comfrey, the purple hand-in-hand with the white, crept forth to take its place in the line; and at last one morning the diffident and delaying dog-rose stepped delicately on the stage, and one knew, as if string music has announced it in stately chords that strayed into a gavotte, that June at last was here” Kenneth Grahame, *The Wind in the Willows*

The Church Annual Flower Festival this year was based on the theme ‘In Celebration of Music’. Flowers and music have had a long association with one another, and have inspired composers for centuries. Roses in particular have been the inspiration behind many classical compositions and modern day songs, but many other flowers represent the art of music either through their symbolic meanings or their visual resemblance to musical instruments.

Lily of the Valley is often used to symbolize the purity of music, with their graceful bell-shaped flowers being compared to the movement of notes on a musical staff.

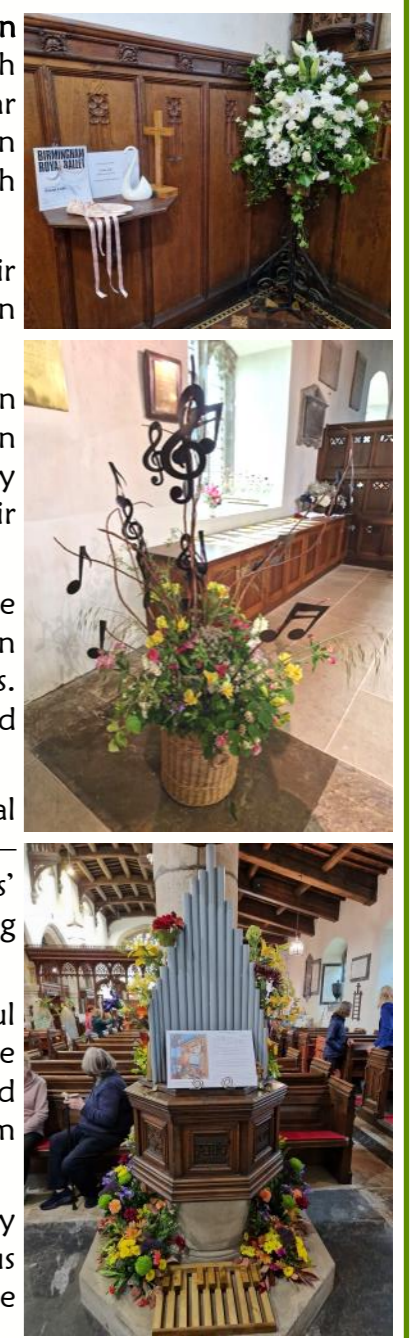
Fuchsias have a trumpet-like shape and were a popular decorative plant in Victorian times for musical events and performances, and sometimes given to musicians as a sign of appreciation for their musical talents. Similarly Sweet Pea petals are said to resemble the shape of a violin, and their delicate scent is compared to the sweet melodies of music

Flowers that represent music due to an association with their name include Violas, Trumpet Vine, Bluebells and Bellflowers, the latter with the Latin name *Campanula*, with a clear link to ‘Campanology’, the study of bells. Many other flowers are bell-shaped, such as foxgloves, penstemons and fritillaries, and enjoy varieties with musical names.

The flower arrangers for the Festival took full advantage of the musical associations and filled the church with stunning and imaginative displays—ranging through musical instruments, classical compositions such as Delibes’ *Flower Duet* and Haydn’s *The Seasons*, and more recent music including *Phantom of the Opera* and *Sing a Rainbow*.

Over 250 people visited the Festival and £1,150 was raised, with grateful thanks to all who organised the event, arranged the flowers, provided the very welcome refreshments in such hot weather, stewarded the event, and played live music with the Beetham Community Band and the Beetham Handbell Ringers.

The Festival theme of Music was chosen as part of the 150th anniversary celebration of the installation of the Beetham Church organ. Please join us in marking this special anniversary on 5th September, with details available in next month’s edition of *The Gateway* and tickets on sale from July.



Jenny Marks

Letter from the Curate

Anyone else finding it hard to believe it's June already?!

You may or may not know that the month of June is named after the Roman goddess Juno who was associated with women, marriage, family and children. While I'm not one to dwell on ancient Roman religion (of this kind), this factoid did make me think about some modern day 'goddesses' - the Mothers' Union - who are celebrating 150 years this year! The Christian faith, of course, centres, not on mythological figures, but on the love and grace of God, but it's interesting that the themes traditionally linked with June/Juno are also deeply connected with the caring, nurturing and faithful service shown by members of the Mothers' Union today.

The MU is a worldwide organisation whose vision is to see a world where everyone prospers. They actively pursue this through prayer and faith in action - seeking to bring about justice, challenge prejudice, and advocate change. They do all this from a foundation of Christian faith - seeking to support and transform local communities. Their mission is lived out through support for families, outreach to vulnerable communities, parenting programmes, campaigning against domestic abuse, and offering friendship and hope to those who may feel isolated or forgotten.

The title might suggest that it's a group of women (mothers, you'd think) who make up the Mothers' Union. However, from its humble beginnings in 1876 when it was founded in the small parish church of Old Alresford, Hampshire, by a vicar's wife called Mary Sumner, it has grown into a global movement with, now, 4 million members across 84 countries - not all mothers, and not even all women.

On 10th June, there will be a special service held in St Paul's Cathedral in London to help mark their 150th anniversary. Closer to home, the MU in Cumbria are celebrating by holding a families weekend in July at Rydal Hall. And, even closer to home, the local branch of the MU - based in Milnthorpe - is seeing an opportunity to raise awareness of this wonderful organisation in the local area. If you would like to know more, then do be in touch with the branch leader, Marion (details at the end of the article). All are welcome at the monthly meetings!

Whether through supporting young families, visiting the lonely, knitting for those in need, fundraising for charitable projects, or simply offering a listening ear,... the Mothers' Union here in the Kent Estuary demonstrates faith in action in many quiet and faithful ways. In many ways, the members of the Mothers' Union are the modern-day goddesses - not figures of legend, but real people quietly transforming lives through faith, kindness and service. St James writes about this in the bible:

'...faith by itself, if it is not accompanied by action, is dead.' (James 2.17)

All Christians are called to live out their faith in active ways. In a world that can often feel dark and uncertain, the witness of organisations like the Mothers' Union shines as a reminder that loving service, rooted in Christ, still changes lives. We give thanks for 150 years of faithful ministry and pray for God's continued blessing upon the Mothers' Union in the years ahead.

With love & prayer

Hannah

To find out more, go to - www.mothersunion.org. Contact local MU branch leader, Marion Douthwaite on 07950 807007 or secretarymu@outlook.com



St Michael & All Angels Beetham Church Services for June 2026

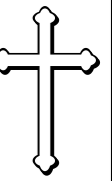
Date	Time	Service
Weds 3rd June	10.30am	BCP* Holy Communion
Sun 7th June	11am	Parish Eucharist
	6pm	BCP Evensong
Sun 14th June	11am	Parish Eucharist
	6pm	BCP Evensong
Sun 21st June	11am	Parish Eucharist
	6pm	BCP Evensong
Sun 28th June	10.30am	KEMC Gathering Storth
	6pm	BCP Evensong

Please see weekly pewsheet or website for further details

*Book of Common Prayer

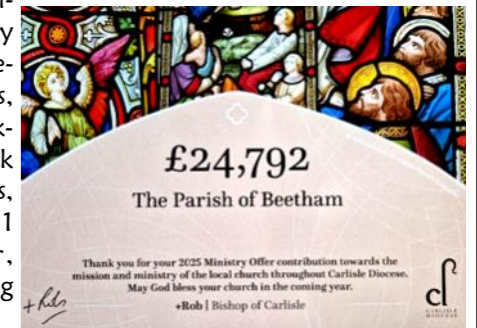
Funeral

Tuesday 26th May
Gladys May James
May she rest in peace



Carlisle Diocese Ministry Offer

We have received thanks for this year's Ministry Offer contributions. Ministry Offers across the Diocese have funded 72 full-time stipendiary clergy, 7 house-for-duty priests, 5 family workers, 8 network youth ministers, 5 pioneers, 1 administrator, and training posts



Kent Estuary Mission Community
Sharing God's Love in Christ

Gathering
Sunday 28th June 2026
10.30am
at the **Heron Hall, Storth**
(all being well we'll be outside)

We come together as churches across the Kent Estuary to unite in worship and prayer together.

ARNSIDE

crafts & activities

food (including a meal)

Messy Church

fun

stories & music

Friday 12th June 2026
3.30pm - 5.30pm
Arnside Methodist Church

REST & RESET
Christian meditation
A moment to press pause !!
St James Church Arnside
6:15 - 7:00PM

2026 Dates

JAN TUES 6th | MAR TUES 3rd | MAY TUES 5th | JUL TUES 7th

REST & RESTORE
A time of prayer for healing & wholeness
St James Church Arnside
6:15 - 7:00PM

FEB TUES 10th | APR TUES 14th | JUN TUES 2nd

Annual Vestry & Parochial Church Meetings 2026

Thank you to all who attended the Church Annual Meetings on Sunday 3rd May. The meetings are an opportunity to formally look back on the last year, receive the Church Annual Report (copies available on our website), vote for church representatives for the forthcoming year and give thanks for the work of God's church here.

The following were elected at the Annual Meetings and the May Parochial Church Council (PCC) to serve in various church offices:-

Churchwardens ~ Viv Stirrup, John Lomax and Peter Lever

Deanery Synod representatives ~ Viv Stirrup and Jane Lever

PCC Treasurers ~ Andy and Dorothy MacLeod

PCC Secretary ~ Charles Ellis

Safeguarding Officer ~ Andrew Skinner

Electoral Roll Officer ~ Jenny Marks

We are grateful for their willingness to serve in this way and to all those - both seen and unseen - who help to support our ministry and church here at St Michael & All Angels.

Beetham Church Organ 150th Anniversary

Saturday 5th September
2-4pm

Afternoon Tea

with

Music from Geoff Field and friends

A History of the Beetham Organ

A look inside the organ and how it works

Tickets £10

Available in July from the

Friends of Beetham Church Committee

or via Ticketsource

**Walking The
KENT ESTUARY PILGRIM WAY**

A spiritual 'footprint', a touch of history, a breath of fresh air

Join us for a 'pilgrimage experience' walk on the Kent Estuary Pilgrim Way. Make of it what you will: a chance to look and listen, to reflect on the past and the present and on the beauty of the landscape, or just a short afternoon social walk with others.

**Sunday 21st June ~ Levens Methodist Church
to St Peter's Heversham**

**Sunday 19th July ~ St. Peter's Heversham
to St. Thomas' Milnthorpe**

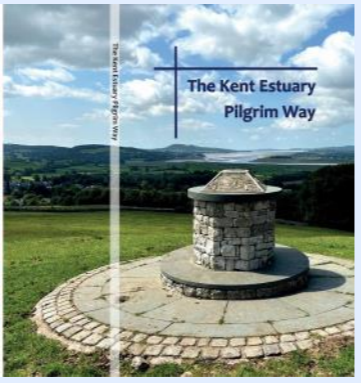
**Sunday 16th August ~ St. Thomas' Milnthorpe
to St. Michael & All Angels Beetham**

Family-friendly: children and dogs are welcome
All walks start at 2pm
Return transport can be arranged
Copies of 'The Kent Estuary Pilgrim Way' are available
in the local churches price £6

The Kent Estuary Pilgrim Way

Guidebook available from the Church Bookstall and retail outlets

Price £6



Flower Festival Congratulations
to Brian Smalley & Dennis Wright!




JUDGES NOTES

Harmonious balanced colour mix, and sophisticated asymmetrical shaping.
Unobtrusive and secure mechanics, with meticulous workmanship.
Intelligent interpretation of the theme, involving the imaginative incorporation of bells to create an exciting interactive experience for the spectator.

Beetham's Big Duck Day ~ 2nd May

Once again dozens of yellow ducks raced down the River Bela, cheered on by an enthusiastic crowd hoping to win the heats and get into the Grand Final to win the top prize of £100 cash. The weather was kind, the river was flowing well, race tickets sold out, and the many stalls run by the Friends of Beetham School did a roaring trade.

Thanks go to Mr & Mrs Gardiner for allowing us to use Ellers Meadow, to the Friends of Beetham Church for organising the event and selling tickets, Brian and Ian for manning the A6 crossing, all the duck catchers in the river, the duck launcher, the duck runner, the race recorder, and of course the Revd Andrew for his wonderful commentary throughout the event!

We are grateful to all those who donated prizes, including Beetham Nurseries, The Heron Theatre, Daniel Gray Hairdressers, The Old Beetham Post Office Tea Room, The Wheatsheaf, and Kendal South Choir.



"JUNE IS A LOVE SONG WRITTEN BY NATURE" *Patience Strong*

Hi-de-hi dear Reader! June is busting out all over Beetham. It began just before June with the Flower Festival over the Bank Holiday. The theme was Music, prompted by our organ celebrating 150 years since its installation. I doubt it has ever been as well played as it is now by our musical director Geoffrey Field and, of course, Jenny. We really are very lucky that such a small village has so many musical outlets. Whilst the world seems to be getting stranger every day, music is the medicine we need. A universal language made up of black dots on a page or just exploring sound through its many mediums. The Flower Festival was wonderful as always and our Community Band played so well and, what's more, thoroughly enjoyed ourselves.

"I'M GRATEFUL THAT MUSIC HAS BEEN A PLACE WHERE I'VE FOUND FREEDOM" *Valerie June*

You may have noticed dear Reader that I always use quotes. They are useful for reference or setting a tone. Music is both medicine and magic to me. For example how we came together, especially on the Saturday to perform and enjoy some time together over lunch. Magically after our lovely trombonist had to move away, along came another to join us. It is like she has always been with us! It is as though we have a brass section revolving door as also, after that Saturday, we have another new member starting very soon. Hurrah!! The more the merrier. It was almost like Mariah had come early. If you have ever wondered, what is it like being part of BCB, is it as warm and fuzzy as Tess implies??? Well here are a few words from one of our lovely players.

A player's experience of playing in Beetham Band

"I have been playing in Beetham Community Band for about two years. I love it! I came with no experience of playing in bands and no instrument and now here I am playing [not all of] the notes on the baritone horn, part of a very inclusive, welcoming bunch of Saturday morning people. We meet at 10.30 [not too early] and play till 12 noon. It's all very easy breezy. You don't feel any pressure, it's ok to miss band practice if you can't come. We have gigs throughout the year, mostly in the Beetham area. We make a great noise, playing all kinds of music – swing, blues, jazz, rock, classical, big band, songs from the musicals, ballads, country. 100% recommended."

So why not give it a go? I shall look forward to hearing from you. Much love as always, Tess, 07725 580095

Parish Coffee Morning
Tuesday 2nd June
10.30am-12pm in church



Please do join us for refreshments and a chat!
All are very welcome.

There is no charge but any donations will be gratefully received for maintenance of our church

Thank you also to all the Beetham residents who created such imaginative 'duckorations' around the village and congratulations to all the winners.



This month's report documents some of the extra-curricular provision that the school provides.

Tower Wood by Harriet and Ivy M (Class 2 pupils).

This year's Tower Wood residential has been the best so far. First on Thursday morning, I said goodbye to Dad with tears in my eyes but I knew that it was going to be fine. First, we went tree climbing with our harness and helmets. I got to go first.

In the afternoon, we were going on canoes. After a lot of preparation, we finally set off on to the water. We paddled up the lake and stopped after a while to play some games. We set off back but there in the distance hail stones bounced off the water and we knew it wasn't safe. We quickly paddled back to shore on the nearest beach. We huddled underneath the tarpaulin. It was really hot in there whilst the hail stones hit the top. When it was all finished, we paddled back and put the boats away. Some people chose to jump off the jetty.

Then we went to bed.

Our next activity was ghyll scrambling. We had to drive in the bus. While in the ghyll some people fell in. My friend lost her welly so the instructor had to jump in to get it.

In the afternoon, I went climbing. We jumped off the Leap of Faith. I was scared but I overcame my fear and did it!

London by Mark Ryan (Chair of Governors).

Earlier this month I went with Class 3 to London to visit the Natural History Museum, the London Eye, and the Houses of Parliament. The trip was planned to coincide with the class learning about how our laws are made, the role of MPs, and democracy in our country. In addition to the Houses of Parliament, we also saw the statue of Emmeline Pankhurst and Scotland Yard which prompted additional conversations on this subject. The Natural History Museum exhibitions we visited coincided with the class learning about volcanoes, earthquakes and evolution, and other sights we saw were The National COVID Memorial Wall and the Battle of Britain memorial.

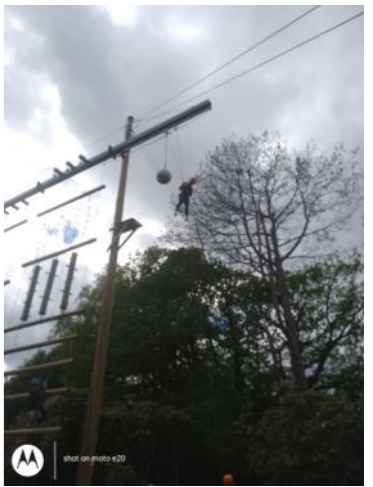
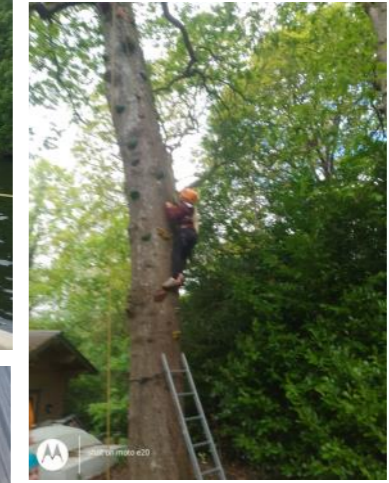
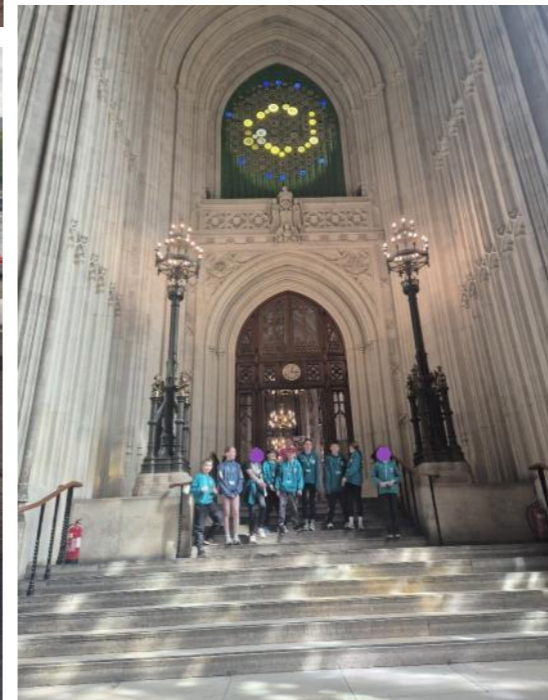
It was fascinating to see the children experiencing the wide cultural variety of London, from the tube and its noise and bustle, to buskers and a piper at Westminster.

I thoroughly enjoyed my day out with Class 3, whose behaviour, without exception, was impeccable. Whilst the SIAMS inspection recognised that the school Christian vision shapes the daily life in school, it was clear to me that the love, perseverance and respect the children exhibit extends outside of school to each other and to the public they interact with. In the Natural History Museum, it was a proud moment when a member of staff from another school, unprompted, came to me to say how polite our children were.

Returning home, our journey was somewhat prolonged due to train cancellations, but despite being tired the children showed tremendous resilience in dealing with a long journey and multiple changes, and I was proud of them throughout. Thanks to Mrs Klijn for her impressive organisation which led us through London to get to the right places at the right time.

Best wishes,
Abi Johnson

School Corner



Beetham WI ~ Even though some of us don't knit . . .

We were all really impressed when we went to see the unusual touring exhibition - "The Longest Yarn" - at Rheged in April. The 80-metre, 3D knitted and crocheted exhibition entitled "Britain at War" was crafted by hundreds of volunteers from around the world. Each of the 80 clear-boxed panels commemorated life and events during the Second World War. There were also 8 life-sized figures, completely dressed and accompanied by knitted items, representing ordinary people who contributed to the war effort.

Though the exhibition has moved on from Penrith it will be staged at different locations around the country during this year and next. Details and more photos can be found on their website: www.thelongestyarn.com. Recommend 'zooming in' on photos to see the incredible handiwork in detail.

For our monthly meeting in May, Stewart Lambert from Kitriding, Kirby Lonsdale came to talk to us about diversification and farming. There is a Tea Room with food and craft products at the farm, so worth a visit - details at www.kitridingfarmshop.co.uk/visit/

For our June session on the 11th we are having a 'members only' Craft Session.

But do keep an eye out on our Noticeboard for future Talks when guests are welcome to attend and if you'd like to know more about our WI, contact us on beethamwi@gmail.com



AMERICANA

Levens Choir Choral music from the USA celebrating 250 years of US Independence.

Music Director: Gawain Glenton
Soloist: Rebekah Nießer-Jones

St John's Church
Silverdale, LA5 0RH
7:30pm Sunday 5 July 2026
St Anne's Church
Ings, Kendal LA8 9PY
7:30pm Tuesday 7 July 2026

Tickets £15
www.levenschoir.net
or on the door
Children & Students Free



SILVERDALE & ARNSIDE ARTS FESTIVAL 27 - 28 JUNE 2026 10AM-5PM

A Celebration of Art & Craft in Silverdale, Arnside & Storth
EXHIBITIONS | MEET THE ARTISTS | SHOP LOCAL

80 artists and makers, pop up cafes and special events
FREE ADMISSION
Visit the website for map, venue opening times and events
www.silverdale_arnside_art_festival.co.uk

Beetham Village Facebook
A dedicated facebook group for Beetham village
Search for "Beetham Village Cumbria"



art dance music film
the HERON theatre
June What's On

- Friday 5th June - The Ballad of Wallis Island (Film)
- Sunday 7th June - South Lakes Acapella (Music)
- Friday 12th June - Fake (Magician & storyteller)
- Friday 19th June - I'm Still Here (Film)
- Saturday 20th June - Kedu (Jazz)
- Friday 26th-Sunday 28th June 25th Anniversary Weekend

Anniversary Event: Double Feature
More Than A Match (Silent film with live pianist)
Amélie (15) - 25th Anniversary re-release
Friday 26th June 7.00pm

Anniversary Event: Family Entertainment Indigo Theatre
Gaby Gulliver's Travels
Saturday 27th June 11.00am & 2.00pm

Anniversary Event: The Flight of the Heron
theCOMPANY & Michael Lunts
Saturday 27th June 7.30pm

Anniversary Event: Open Day
Event 1: Eberle String Trio & Burnt Horse
Event 2: **theCOMPANY & PoVo Jazz**
Sunday 28th June 12.00pm & 3.00pm

Book tickets online www.theherontheatre.com
email: boxoffice@theherontheatre.com ~ tel: 015395 64283
Evening performances start at 7.30pm. Sunday music 2.30pm.
Refreshments available
The Heron Theatre, Stanley Street, Beetham, LA7 7AS

Heydays
Care & Support Services

Choose the right home care for you & your loved ones.

A local, family-run home care agency, we offer a range of care packages tailored to our clients, including **live-in, dementia** and **palliative care** services.

www.heydayscare.co.uk | 01539 555 685

Save the date!
BEETHAM & HALE VILLAGE SPORTS 2026
Saturday 25th July
Traditional Village Sports Since 1908

- Historic Fell Race
- Cumberland & Westmorland Wrestling
- Adult & Childrens Races
- Childrens Fancy Dress
- Famous Tug of War

PRIZES | RAFFLE | STALLS & GAMES
CHILDRENS AMUSEMENTS | ICE CREAM | HOT & COLD FOOD
REFRESHMENTS ALL DAY | LICENCED BAR

HERITAGE WALKS!
5TH JUNE - 3RD JULY - 7TH AUGUST - 4TH SEPTEMBER
10:30AM - 12:30PM
ADULTS £4.50 CHILDREN FREE

Whilst urgent repairs to the mill launder take place, you are invited to join in on these fascinating walks through the local landscapes, listen to stories filled with knowledge, myth and folklore! Medium terrain, good footwear a must. You will arrive back at the barn for Foodie Friday, in time to buy fresh bread, cakes and other goodies!

BOOKING ESSENTIAL: 01539 564271 / INFO@HERONMILL.ORG
WWW.HERONMILL.ORG

HERON CORN MILL
FOODIE FRIDAY
FRIDAY 5TH JUNE
1.00PM - 3.00PM
FREE ENTRY

A MINI-MARKET WITH A RANGE OF FRESHLY MILLED FLOURS AND OATS, FRESHLY-BAKED BREADS, STALLS SELLING SAVOURIES, CAKES AND QUICHES.

MILL LANE, BEETHAM, LA7 7PQ

GAME ON
YOUTH CLUB
Play • Eat • Explore

Tuesdays 3:45pm - 5:15pm
(term time only)
School years 7-9

Board Games || Pizza
Optional faith space
Arnside Methodist Church Hall,
Chapel Lane, LA5 0AQ

More info contact Tiras - 01524 963716

Please support our local advertisers

Private Hire Silverdale Arnside and Yealand
0800 132383



www.saycars.co.uk

50 years of 'knowledge', riding and driving our area's roads
Licensed and Regulated by Lancaster City Council



Open Wednesday
to Sunday
11am 'til late
www.wheatsheafbeetham.com
stay@wheatsheafbeetham.com
015395 64652



Flowers for all occasions
Woodlands Nurseries
Crooklands
01539 567273

PLUGGED IN ELECTRICIANS
SOLAR & BATTERY SPECIALISTS
✓ Solar PV installations
✓ Battery systems & upgrades
✓ Battery backup systems
✓ Add batteries to existing solar
✓ Solar performance checks
Call 01524 932524
pluggedinelectricians.co.uk
hello@pluggedinelectricians.co.uk

HOUGHTONS Park Road, Milnthorpe
HOME IMPROVEMENT CENTRE 015395 63904
Open Wednesday, Friday, Saturday
Trade & Retail
DIY, Hardware, Tools, Paint, Electrical,
Household Goods & Gardening Equipment
Gift & Cards for all occasions

PARKIN and JACKSON Monumental Masons
New Memorials
Second Inscriptions, Repaints,
Regilds and Renovations
Visit the showroom on
14 APPLEBY ROAD, KENDAL LA9 6ES
Telephone: 01539 722838
Free estimates & brochure on request
www.parkinandjackson.co.uk
email: info@parkinandjackson.co.uk

BOOK COLLECTIONS BOUGHT
or individual items. Will travel to view.
Phone Allithwaite 015395 35125
Mobile 07923 521764
P.B.F.A. member

SOUTH LAKE LAND AGE UK
For lunch club and exercise class details go to
www.ageuk.org.uk/southlakeland/activities-and-events
ageuk Helpline : 030 300 30003

J&R Landscapes
Specialising in fencing, stone walling, paving,
garden rooms, lawns and water features.
Bespoke garden design and build
Free estimates. Call 07954 336176

FISHWICKS FUNERAL SERVICE
Established 1935
Beetham Hall Beetham
015395 63108
Independent Family Business
24hr service
www.fishwicksfunerals.co.uk
BEETHAM HALL CREMATORIUM
Established 2017
015395 65363
www.beethamhall.co.uk

A.M. DECORATING
HIGH CLASS INTERIOR DECORATOR
• All aspects of painting and decorating
• Specialist wallpaper hanging
• Hand painted kitchen re-sprays
• Furniture spraying
• Coving fitting and cornice repairs
• Dust free sanding
City & Guilds Distinction 07951 023 335
52 Hornby Road, Caton, LA2 9QS
a.m.decorating50@gmail.com

Chimney Care Co
Sweeping - Servicing -
Stove Installation
07881 023986
chimneycareco.co.uk

MARTIN'S PAINTER & DECORATOR
07881 895909
01524 61834
martin.painting.decorating@gmail.com

NEIL TAYLOR
Painter, Decorator
& Paperhanger
Tel: 015395 - 64411
Mobile: 07778 - 467521

T.T. CARPETS
RED BARN
HARMONY HILL
MILNTHORPE
015395 - 62898

L. M. Baverstock
Ophthalmic Opticians
The Square, Milnthorpe
015395 - 62633

Irene Taylor Hearing
- Specialist hearing aid advice
- Earwax removal by microsuction
- iPhone compatible hearing aids
- Invisible hearing aids
- Hearing protection for shooting, motorcyclists & musicians
- TV & telephone accessories
- Home visits
Salt Pie Lane, Kirkby Lonsdale, LA6 2BH
015242 73589
Est. 1980 - Registered with hcpc
www.irenetaylorhearing.co.uk

Carnforth Chiropodist
"Helping you and your feet go a long way"
Comprehensive professional, friendly and effective chiropody & podiatry services. Expert help in our welcoming treatment room, conveniently situated in Carnforth
Routine footcare & hygiene issues • Long term health conditions
Resolving pain and posture problems • Nail surgery
Web: www.carnforthchiropodist.co.uk
Mobile: 07725 300290 Email: carol@carnforthchiropodist.co.uk
Address: 28 Langdale Road, Carnforth, Lancashire LA5 9AU

Would you like to advertise in The Gateway?
Space in all ten issues can cost as little as £33 for the year, for both the printed and the online circulation
To book call the editor, Jenny, on 015395 62559, email jenny.marks@btinternet.com or visit our website for more information

St Michael & All Angels FABRIC APPEAL
St Michael and All Angels exists to worship God, to share the love of Jesus Christ and to serve our wider community in his name. Our ancient and beautiful church building is at the heart of the parish and village of Beetham and is open to everyone. In looking to the future, various parts of our church fabric are in pressing need of repair and restoration, and we would appreciate your support in helping us make this possible. Might you be able, out of your kindness and generosity, to help us preserve this cherished Grade 1 listed building? Thank you
Any donation small or large would be gratefully received. Please scan the QR Code for direct donation to Beetham Church.
St Michael & All Angels Parish Church, Beetham, Milnthorpe, Cumbria, LA7 7AL

CONTACTS FOR THE PARISH OF ST. MICHAEL AND ALL ANGELS, BEETHAM

Priest-in-Charge	The Revd Andrew Norman	015395 62355	revdabn@gmail.com
Assistant Curate	The Revd Hannah Wallace	01524 449035	revhannahwallace@gmail.com
Lay Minister	Chris Roberts	015395 63019	lainyandchris@aol.com
Lay Minister/Churchwarden	Vivien Stirrup	015395 64320	vstirrup7@aol.com
Churchwarden	John Lomax	015395 62648	j.d.lomax@btinternet.com
PCC Treasurers	Andy & Dorothy MacLeod	015395 62062	admdhm@live.co.uk
Safeguarding Officer	Andrew Skinner	07362 593076	beetham-safeguarding@gmail.com
Gateway Editor	Jenny Marks	015395 62559	jenny.marks@btinternet.com
Beetham CE School	Abi Johnson	015395 62515	head@beetham.cumbria.sch.uk

Please do be in touch with Andrew you would like to receive the parish email, if there is any support or encouragement he can offer, if you would have any questions about services church life or the Christian faith, or if you would like anyone or anything remembered in prayer.

Church Websites
For information about our church and parish, What's On, and church videos please visit our website at www.beethamstmichaelandallangels.co.uk. Full colour versions of this and past editions of The Gateway are also available online. If you would like to receive an email copy please contact jenny.marks@btinternet.com
For more details of the Kent Estuary Mission Community visit the website at www.kentestuarymissioncommunity.com

The Gateway deadline
Items for the Summer edition should be submitted by **Monday 22nd June**. Please email articles to jenny.marks@btinternet.com. View deadlines online at www.beethamstmichaelandallangels.co.uk