

The Friends of Beetham Church present

Dessert Island Discs

Friday 10th October, 7.30pm
Heron Corn Mill Barn



Join our celebrity castaway as they share
the soundtrack of their life!

Tickets £15

to include Hot Pot, Apple Crumble, & Drinks

Available from Dianne Lomax on 015395 62648

St Michael and All Angels, Beetham

Michaelmas

celebrating our Patronal Festival



Sunday 28th September

11.00am - Patronal Eucharist

6.00pm - Patronal Evensong

*'Ye holy angels bright, who wait at God's right hand,
or through the realms of light fly at your Lord's command,
assist our song, for else the theme
too high doth seem for mortal tongue.'*



St Michael & All Angels Heating Appeal

We are delighted to say that the installation work on our new church boilers has been completed. The heating system will be independently tested and commissioned at the beginning of September. This means that we can look forward to a warmer winter, and drier conditions to protect the precious interior of our historic church. Our grateful thanks go to Keith and Mark from J W Moore & Co for such tidy and efficient work - in some very cramped conditions...

Completion of the work also means paying the bills! A big thank you therefore goes to everyone who has donated towards our appeal, and to all those who have spent so much time and effort in running fundraising events over the past year. The **Strawberries and Scones** afternoon on Saturday 12th July was an enjoyable occasion, with entertainment from the Beetham Handbell Ringers and the Beetham Band, and a church stall was held at **Beetham Sports**, with both events contributing to the appeal.



However, getting our heating back is just one step in the constant maintenance of our building, and our next project is to repair the external parapets at the east end of the church as identified in the Quinquennial Report. Requiring extensive scaffolding this project will be a significant cost and our fundraising will need to continue, so our thanks if you are able to carry on supporting us where you can. Andy and Dorothy MacLeod will be continuing their successful monthly **Parish Coffee Mornings**, and details of other fundraising activities can be found elsewhere in this magazine. A reminder that you can still also donate to the repair appeal by scanning the QR code, or visiting our website for other ways of giving. Thank you yet again for all your generosity.



THE GATEWAY

PARISH MAGAZINE OF
ST MICHAEL & ALL ANGELS, BEETHAM

SEPTEMBER 2025

www.beethamstmichaelandallangels.co.uk

New Beginnings

I like September. I enjoy the cool clear mornings that come with the end of meteorological summer, knowing that the stifling August heat is behind us for another year (pace climate change). Gardens are still colourful; fields are green or golden; the days are still long enough and mostly warm enough to give us balmy evenings and the opportunity to sit and relax and enjoy the dying rays of the sun. Towards the end of the month the Autumn Equinox will mark the point at which the earth's tilt will move the sun south of the equator and lead us inexorably towards our winter, but for now at least, we can enjoy a comfortable lull between the extremes of our climate.

200 years ago William Wordsworth captured the essence of the month in his poem entitled appropriately *'September, 1819'*:

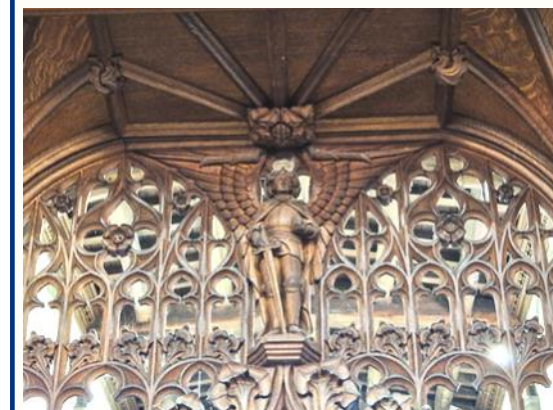
*"Departing summer hath assumed
An aspect tenderly illumed,
The gentle look of spring."*

Wordsworth encourages us to enjoy the calm of the season; his 'gentle look of spring' a reminder that more turbulent times lie ahead (indeed, his poem is about much more than the nature of the season, but that is a story for another time, perhaps!).

And for anyone who has been involved in the world of education - and that is all of us - then September is indeed the month of new beginnings. A new academic year in schools and colleges offers a fresh start for students and teachers alike, a chance to forget past mistakes and to develop new ideas and enthusiasms, with all the promise, excitement and apprehension of the unknown lying ahead.

I remember clearly many such September 'new starts': my own first day at infants' school - and in those days, before playgroups and pre-school nurseries, being left on my own in the company of strangers for the first time was very much a 'new start'; then a change of school and a ride on the tram for what used to be called 'Juniors'; the first day at Grammar School, mortified that my mother would not buy me my first long trousers; a daunting first day as a fresh-faced newly-qualified teacher, facing for the first time hundreds of individuals for whose future I was in part responsible!

But for all of us, challenge and hope go hand in hand. Nothing remains the same forever, and part of growing is learning how to adapt to changing circumstances.



Here at St Michael & All Angels we also have to be prepared to face up to change and challenge. We look forward to celebrating our Patronal Festival with the feast of St Michael & All Angels on 29th of the month as we continue to care for our magnificent and beautiful church, with all the problems and challenges that brings.

Some things do not change, and maintaining this ancient building brings constant pressure as we try to ensure its continued existence for another thousand years. We are exceedingly fortunate to have such generous support from this community, and it would seem an appropriate time to thank all of you who have so generously supported our efforts over past years. We can

now face the coming winter months safe in the knowledge that our new heating system will help to keep the fabric of the building in good condition (and hopefully keep us warmer on Sunday mornings, too!).

So thank you all, and enjoy this month of new beginnings, challenge, and hope.

Brian Smalley

Letter from the Curate

"There is something so special in the early leaves drifting from the trees – as if we are all to be allowed a chance to peel, to refresh, to start again." (Ruth Ahmed)

September and the coming of the autumn season feels like a fresh start. Whether it's getting back into the shape and potential that the academic year provides, getting back into routines following the spontaneity of the summer or just having an opportunity to look afresh at what the coming months may hold... There's a freshness about the crisp of an autumn morning and the changing colours of the leaves that can encourage us to look at things in a new way.

In recent months, the national Church has been getting quite excited about the sense of a new season. The Church has been used to seeing statistics of decline over the years – with less people attending in the light of modern times and its accompanying demands and attractions. Some might have seen the Church as an autumn leaf – beautiful yet falling, dying. However, "the tide of faith, whose 'melancholy, long-withdrawing roar', as described by Matthew Arnold, has now turned."

This quote comes from the report commissioned by the Bible Society published earlier this year. Based on comparative YouGov data taken from between 2018 and 2024, it's suggesting a significant growth in church attendance – as well as openness to faith, the bible and to conversations about Christian spirituality. In the under 35s age bracket, in England and Wales, in the last 6 years, church attendance has quadrupled. The statistics and the stories are quite staggering. So much so that the secular media are addressing it with intrigue. (Just a couple of weeks ago, as I write, the Sunday Express' front page headline read 'Global crises sending Gen Z to church'.) This trend is being recognised and questions are being asked. I wonder whether you, too, might have asked yourself the question: What's all the hype about Christianity? What's so special about Jesus Christ?

I wonder whether these bible verses may go some way to begin to answer those questions...

"This is how God showed his love among us: He sent his one and only Son into the world that we might live through him. This is love: not that we loved God, but that he loved us and sent his Son as an atoning sacrifice for our sins." (1 John 4.9-10)

"He tends his flock like a shepherd: He gathers the lambs in his arms and carries them close to his heart." (Isaiah 40.11)

It's incredibly exciting to be part of the Church in this country at a time when God appears to be very much at work – answering prayers that have been prayed for so very many years... prayers that more and more people will come to know the love and salvation of Jesus. May this growth last and may we see a continuous increase of people discovering faith and new folk walking through the doors of our churches.

A reverse of the decline in church attendance, however, doesn't mean that it'll just go back to how things used to be. The co-author of the Bible Society report writes: "More people coming to church is not a return to the Christianity of the past... This is a new landscape... There has to be a posture of humility and learning, trying to work out what's going on."

Just as with those autumn leaves, I pray that the Church (and all of us in our own ways) may recognise that even beautiful things have to change, even to die, in order to make way for new birth and new growth. So let's take hold of this new season with a sense of hope for what's to come – whatever that may be.

With love & prayer, Hannah

If you want to know more about Christianity, then please don't hesitate to be in touch. I'd be more than happy to chat.

¹Dr Rhiannon McAleer & Dr Rob Barwood-Symmons, *The Quiet Revival report* (The Bible Society, 2025)

²Dr Rhiannon McAleer quoted in Madeleine Davies, *Quiet Revival: Myth or reality?* (The Church Times, 15th August 2025)



St Michael & All Angels Beetham Church Services for September 2025

Date	Time	Service
Weds 3rd Sept	10am	BCP* Holy Communion
Sun 7th	11am	Parish Eucharist
	6pm	BCP Evensong
Sun 14th	10.30am	KEMC Eucharist Beetham
	6pm	BCP Evensong
Sun 21st	11am	Parish Eucharist
	6pm	BCP Evensong
Sun 28th	11am	Patronal Eucharist
	6pm	Patronal Choral Evensong

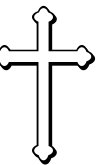
Please see weekly pewsheets or website for further details

*Book of Common Prayer



The next Kent Estuary Mission Community Eucharist Gathering
will be held at 10.30am on
Sunday 14th September
St Michael & All Angels, Beetham
Please note the earlier start time for the morning service here. Evensong will be held at 6pm as normal

Funeral
Friday 8th August
Francis William Clarke
May he rest in peace



Burton in Kendal Educational Foundation

Charity Reg. No. 526953

The Burton in Kendal Educational Foundation provides small grants to Sixth Form, College, University Students and Apprentices. To qualify you need to have lived in one of the following Civil Parishes for at least 2 years and be under 25 years of age:-

Burton in Kendal, Holme, Preston Patrick, Dalton, the Hamlet of Holmescales, Beetham, Meathop, Ulpha, Witherslack or Arnside

For an application form or further information please contact Mrs Marion Robinson: mvrob23@gmail.com
01524 784918 or 07531 575663

The deadline for the return of grant application forms for the 2025/2026 academic year is 31st October 2025

REST & RESET

Christian meditation
A moment to press pause II

St James Church Arnside


6:15 - 7:00PM

JUN
TUES 3RD

SEPT
TUES 2ND

NOV
TUES 4TH

Contact: revhannahwallace@gmail.com 01524 449 035



ARNSIDE

crafts & activities

food (including a meal)

fun

stories & music

Messy Church

when: **Friday 12th September 2025**
time: **3.30pm - 5.30pm**
at: **Arnside Methodist Church**

Grief is hard.
Death can impact all of life.

The Bereavement Journey

a place to talk

for **anyone** bereaved **anytime**

7 sessions of films and discussions

Topics include:


- Attachment, separation and loss
- The pain and responses of grief
- Anger and guilt
- Coping with others' reactions
- Delayed and suppressed grief
- Adjusting to change
- Moving forward healthily
- Faith questions - a Christian perspective (optional last session)

St Thomas' Church, Milnthorpe
Thursdays | 1.00 - 3.00 p.m.
2nd, 9th, 16th, 23rd, 30th October
6th, 13th November

Booking is necessary.
For more information and/or to book, please contact Lesley:
dianalesley@btinternet.com / 01524 951566

To find out more, please visit: www.thebereavementjourney.org





The Bible Course

Explore the BIG story



An eight-session course helping us explore the world's bestseller...

Wednesday
8th, 15th, 22nd, 29th October
5th, 12th, 19th, 26th November
12.30 - 2.30pm

Arnside Methodist Church Hall

An opportunity to learn more about the Bible (journeying from Genesis to Revelation) in conversation and company with others.

Please, if you would like to, bring some lunch!





I don't personally remember it, but Beetham Sports began in 1919. The original marquee was Army Surplus from the 1899-1902 Boer War, and was in use for another hundred years before it's ceremonial burning. Back in the day it was a traditional Lakeland Sports event, much like Grasmere without the lake, however including the highly popular Hound Trails. Attended by top Northern Athletes, a win in Beetham Races was so auspicious that it would make the pages of the Westmorland Gazette.

Before we had Portaloos, the WC was simply constructed using a narrow canvas tent, concealing a toilet seat suspended over a drain. The drain lid was carefully poked back into place afterwards. On another occasion the Portaloos never arrived. I took an executive decision and directed the Crowd to use the facilities at the Wheatsheaf. Dyno-Rod had to be called in, and the lovely landlady Margaret Shaw was not amused!

Later loss of income from the Hound Trails caused problems, and the Sports Committee decided to revamp the day to be more family friendly. The great rivalry between Beetham and Hale was quieted by recruiting the Halians, and it became Beetham and Hale Sports around the Millennium. Chris Merckel, with family and friends, heroically pioneered the Fell Race, now a prestigious meeting in the race calendar. The Tug o' War rope was generously donated by George Hallam, late of the Kings Arms. Catering was provided by the Village ladies, with Christine Sharples and Ann Lusted baking 400 scones on the Saturday morning, and the Wheatsheaf providing it's famous meat-free pasties.



After over 40 years involvement, I have happy memories of Sports day... World Champion Wrestling; Simon Greenwood's shirt; 'Mac' winning the 100 yards at 90 years of age; the lovely children's fancy dress; Beetham Band's jaw dropping rendition of 'Chariots of Fire'; the fabulous community spirit, and the looks on some of the faces on hearing my commentary. The list goes on, as I hope the Sports will continue to do. New blood on the Committee is doing a fine job, as seen this year.

However, I am rambling, so Toodle Pip! and my (insincere) apologies to those whom I may have offended over the years.

Lord Lusted [Paul]
Former Chair, and outgoing Events Commentator



**'CAULIFLOWERS FLUFFY AND CABBAGES GREEN, STRAWBERRIES SWEETER THAN ANY I'VE SEEN.
BEETROOT PURPLE AND ONIONS WHITE, ALL GROW STEADILY DAY AND NIGHT.
THE APPLES ARE RIPE, THE PLUMS ARE RED,
THE BROADBEANS ARE SLEEPING IN THEIR BLANKETY BED!**

Happy September dear reader. Did you have a lovely summer? Even though we have some lively weather still, autumn is gently entering in from the wings. Although our little band has not had a break as such, it still feels as though we are starting a new term. That and the sound of Mariah Carey sheet music getting closer up to the top of the pile. You know it; you love it.

Sports Day was our last gig. A fantastic day, weather, community and music. Our personal best timing for 'Chariots Of Fire'what more could one want.

**'WHEN AN EARLY AUTUMN WALKS THE LAND AND CHILLS THE BREEZE, AND TOUCHES WITH HER HAND THE SUMMER TREES
PERHAPS YOU'LL UNDERSTAND WHAT MEMORIES I OWN**

Ella Fitzgerald. Written by Johnny Mercer & Ralph Burns

Wonderful, and worth a listen.



All of our memories seem to have their own music backing them. Music frames our life, our every emotion, events joyous and sad. It has been proved time and again that music is medicine! Beetham Community Band is on your doorstep issuing musical prescriptions to lift your spirits, keep you young (honestly, I am 86...), Creating musical bonds between us. So do not hold back, we could all use a lot more joy and music in our lives. Oh, and new neuropathways ... did I mention that?

For more information contact me, Tess on 07725580095



**'THE MUSIC OF THE FAR-AWAY SUMMER FLUTTERS AROUND
THE AUTUMN SEEKING ITS FORMER NEST'**
Rabindranath Tagore

Is it time to find a 'new nest'?

Parish Coffee Morning Tuesday 2nd September in Church, 10.30am-12pm



Please do join us for refreshments and a chance to chat.
All are very welcome, and feel free to bring a friend.
There is no charge but any donations will be gratefully received for our church repair appeal

VJ Day



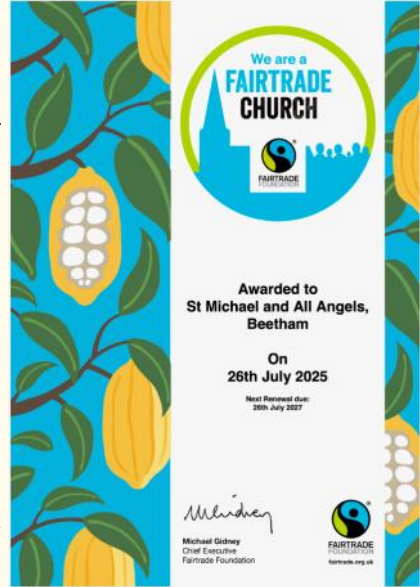
In commemoration of the 80th anniversary of VJ Day on 15th August, a special display of flowers was placed next to the memorial cross in church.

We extend grateful thanks to Dianne Lomax for creating this poignant floral tribute to the event that effectively ended World War II.

Fairtrade Church

We are please to announce that our church was awarded the status of a 'Fairtrade Place of Worship' in July. We use Fairtrade products for our refreshments and encourage everyone to buy Fairtrade items in their own homes.

Fairtrade works with farmers and producers around the globe to uphold fair production practices, allowing workers to enjoy secure and sustainable livelihoods, improve their living standards and re-invest in their local communities.



Church Bookstall

A reminder that as part of our church fundraising we have a Bookstall at the back of the church, with proceeds in aid of our maintenance and repair appeal. Items include cards and notelets for different occasions, and new Christmas cards for 2025 will be available towards the end of September.

Our old 'Guide to Beetham and the Parish Church' has been out of print for some time. This is being replaced with a new short guide to the church giving a brief illustrated history of the church building and contents. As part of our commitment to Eco Church we have made a donation for the replanting of trees to cover the estimated carbon emissions from the production process for these guides, which will be on sale in church from this month. Reprints are also being made of the popular 'Those who served from Beetham' and 'Reconciliation' booklets, both edited by John Lomax, detailing the individuals from Beetham who lost their lives in the Great War, and the story of our Prisoner of War Nativity Crib respectively. Both are a fascinating read, and will be available in the next few weeks.

Further plans for the bookstall include new notelets, bookmarks and postcards. Please watch out for more details in future editions of The Gateway. Suggestions for any other items to be added to the bookstall are always welcome. All sales go directly towards maintaining our church, so please do support us.



School Corner

It was a busy and exciting end to the summer term at Beetham Primary School, with pupils and staff celebrating achievements both inside and outside the classroom.

Classes 2 and 3 performed its wonderful summer production, "Sir David Hattenscarf", a heartwarming and educational play that took the audience on a journey around the world. Through lively performances, the children explored the importance of friendship and learned about the impact people and climate change are having on natural habitats. Parents, carers, and community members praised the cast for their energy and creativity.

The whole school gathered on the field for Sports Day, a highlight of the summer calendar. Pupils gave their very best in a range of team events including hurdles, throwing, and running, before moving on to the ever-popular individual races of sprinting, egg and spoon, and sack races. The day culminated in thrilling class relays to decide who would lift the sports day trophy. After much cheering and encouragement from families on the sidelines, the Blues emerged victorious this year, proudly taking home the title.

The term ended with the Leavers' Service, where the school community said farewell to its four Year 6 pupils. It was a time to reflect on the many ways they have contributed to school life and to celebrate the special memories they will carry with them as they move on to new schools. The staff and pupils wished them every success in the next stage of their journeys.

While the children enjoy their summer holidays, important improvements have been taking place on site. The school has replaced the roof over the offices and kitchen, upgrading to a roof with much better insulation, a change that will both improve sustainability and reduce energy costs.

The school's library has also had a transformation. Thanks to a generous grant from the Farmington Trust, new bookshelves have been purchased, allowing the library to be moved to the very heart of the school. The old library space has been converted into a welcoming reading and working den, complete with comfy cushions and seating where pupils can enjoy books or work together in lessons. The new library and reading space place reading firmly at the heart of the school's curriculum, giving children even more opportunities to develop a lifelong love of books.

From drama and sport to farewells and exciting building projects, Beetham Primary School has certainly had a summer to remember — and the staff are already looking ahead to the new school year. They look forward to welcoming all pupils back next week and are especially excited to greet some new children joining the school.

Best wishes, Abi Johnson



Beetham WI – Summer all-sorts!

We found it quite relaxing doing **Pebble Painting** at our July Craft session with the hardest part deciding what to paint! We then surprised **Norma** with a little celebration for her **'Special' Birthday** including presenting her with a beautiful bouquet of flowers that one of our members, Julie, had created.

Some members took part in another **Pickle Ball** training session under the instruction of members, Lynn & Susan. For our August get-together we had a change of scene by meeting up **Farleton Fisheries** for a social gathering.

The following week two of us received a warm welcome by Silverdale WI members when we joined them for a very well-presented and worth-while training session on some **Life Saving Skills** – CPR & use of a Defibrillator - run by Kerry, a Community Resuscitation Trainer for NWS who is also a First Responder in Endmoor.

We shall be ending August with a trip to **Holker Hall** and hoping the weather remains dry on that day.

In **September** we have our monthly meeting a week earlier than usual (so as not to clash with the Westmorland Show) – on **Thursday 4th September 2-4pm** upstairs in **The Wheatsheaf** - for a **'An Afternoon of Puzzles'** led by Philip Burley. Tea/Coffee available. Guests are very welcome to join us for a small contribution.

More information can be found on our noticeboard in Beetham village or contact our Secretary, Jeanette, on beethamwi@gmail.com

theWI
INSPIRING WOMEN




MILL TOUR & DEMONSTRATION
Friday 5th September, 11.30am - 1pm
BAKING WITH KATE
Wednesday 24th September, 11am - 4pm
CRAFTING WITH ERIKA
Monday 8th September, 1 - 4pm
CRAFTERNOON
Tuesday 30th September, 1 - 4pm
POWSOWDIE
Wednesday 17th September, 11am - 2pm
FOOD FOR THOUGHT
Sunday 28th September, 10am - 2.30pm
POETRY CAFE
Tuesday 9th September, 11am - 3.30pm

Heron Corn Mill, Mill Lane, Beetham, LA7 7PQ
015395 64271 - info@heronmill.org - www.heronmill.org

HERON CORN MILL
FREE ENTRY
HERITAGE OPEN DAY! SATURDAY 20TH SEPTEMBER 11AM-4PM

Buildings
Bridges & Beehives!

The theme for 2025 celebrates the makers & menders of our built heritage.

Stalls, comedy walkabouts, rural skills, beehives, demonstrations & activities for the whole family! Refreshments available in the barn.

MILL LANE, BEETHAM, LA7 7PQ
[@heron.corn.mill](https://www.heronmill.org)

heritage open days

Beetham Parish Council
Next meeting will be in
Storth Village Church
Monday 1st September at 7pm
Members of the public are welcome to attend
Previous minutes and details of the Councillors can be found on the website at www.beetham-pc.gov.uk

Quest Lecture Group
A friendly group, meeting at the Athenaeum village hall, Leasgill, LA7 7ET
Thursday 25 Sept ~ Norman Harris
'Holy cow, India is so different'
Thursday 9 Oct ~ David Evans
'Morecambe Landladies'

All talks start at 10:00am. Annual subscription for 12 meetings, including refreshments, is £18. Guest tickets for individual meetings £2.50. No need to pre-book.
Enquiries to Adrian Tayler: aptayler@gmail.com

A VIBRANT, FEEL-GOOD JOURNEY WITH THE COAT THAT STARTED IT ALL!

MORECAMBE WARBLERS AN AMATEUR PRODUCTION BY ARRANGEMENT WITH THE REALLY USEFUL GROUP LTD

JOSEPH AND THE AMAZING TECHNICOLOR DREAMCOAT
LYRICS BY TIM RICE MUSIC BY ANDREW LLOYD WEBBER
23RD - 27TH SEPTEMBER
Evenings at 7.30pm plus Saturday Matinee at 2pm
TICKETS £18 UNDER 16s £16
FOR TICKETS VISIT: LANCASTERGRAND.CO.UK
OR CALL: 01524 64695

the HERON theatre
September What's On

Friday 5th Sept ~ Mr Burton (Film)
Tuesday 9th Sept ~ Michaelangelo: Love & Death (Exhibition on Screen)
Friday 12th Sept ~ Miss Nobodies (Drama)
Sunday 14th Sept ~ Chanson et Piano (Music)
Saturday 20th Sept ~ Away From Home (Jazz)
Friday 26th Sept ~ Tongue in Cheek (Drama)
Friday 3rd Oct ~ A Complete Unknown (Film)

Book tickets online www.theherontheatre.com
email: boxoffice@theherontheatre.com ~ tel: 015395 64283
Evening performances start at 7.30pm. Sunday music 2.30pm.
Exhibition on Screen 2pm. Refreshments available
The Heron Theatre, Stanley Street, Beetham, LA7 7AS

Heydays
Care & Support Services
015395 52548

LIVE-IN CARE
Enjoy living independently at home for longer

Your personalised alternative to residential care

• Remain at home close to friends, family & your local community
• Peace of mind that your trusted, fully-trained carer is with you day and night
• Full support from our professionally managed team with care plans & regular assessments

Contact our friendly team:
Call us: 015395 52548 | Email: info@heydayscare.co.uk
or visit our website: heydayscare.co.uk

Beetham Village Facebook
A dedicated facebook group for Beetham village
Search for "Beetham Village Cumbria"

Kent Estuary Travel
Est. 1979
24 Hours. Competitive Rates

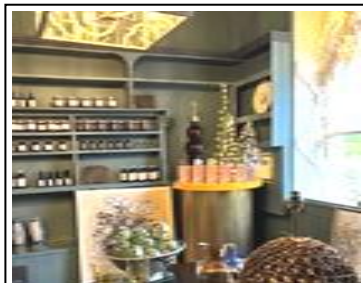
Local family private hire company founded in 1979

All drivers, male and female, have level 2 nvq in road vehicle passenger driving and are fully licensed with SLDC.
We pride ourselves in having a friendly and reliable service

For a quote please contact us on 015395 62917 or 07974 108501



The Gateway deadline
Items for the October edition should be submitted by Monday 22nd September
 Please email articles to jenny.marks@btinternet.com
 View deadlines online at www.beethamstmichaelandallangels.co.uk
 Would you like to advertise with us?
 Space in all ten issues can cost as low as £33!
 To book call John Lomax on 015395 62648 or email j.d.lomax@btinternet.com



Edith Anne

Leslie welcomes you to her interiors shop and cafe in the Old Beetham Post Office

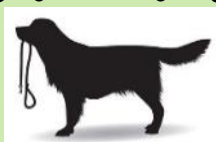
Cafe open Saturdays, Sundays and Bank Holiday Mondays 10am—4pm

See noticeboard for shop opening times

HOUGHTONS 
HOME IMPROVEMENT CENTRE
 Park Road, Milnthorpe
 T: 015395 63904
 Open 7 days
 Trade & Retail
 Large stock areas covering
 Commercial & DIY Power Tools
 Hardware
 Electrical & Household Goods
 Gardening Tools & Equipment
 Timber, Plumbing, Glass, Key Cutting
 Paints, Wallpapers & Decorating sundries
 Paint Mixing Service
 Gifts & Cards for all occasions

WOODSIDE WALKS

Dog Walking & Day Care Service



Fully Insured
 GPS Collars
 10 Yrs Experience
 Countryside Walks

Contact Theo on 07880 237033 to discuss your requirements

PARKIN and JACKSON Monumental Masons

New Memorials
 Second Inscriptions, Repaints,
 Regilds and Renovations



Visit the showroom on
14 APPLEBY ROAD, KENDAL LA9 6ES
Telephone: 01539 722838
 Free estimates & brochure on request
www.parkinandjackson.co.uk
 email: info@parkinandjackson.co.uk



"Helping you and your feet go a long way"

Comprehensive professional, friendly and effective chiropody & podiatry services. Expert help in our welcoming treatment room, conveniently situated in Carnforth

**Routine footcare & hygiene issues • Long term health conditions
 Resolving pain and posture problems • Nail surgery**

Web: www.carnforthchiropodist.co.uk

Telephone: 01524 730179 Mobile: 07725 300290

Address: 28 Langdale Road, Carnforth, Lancashire LA5 9AU

Sustainable Gardening Services
 SOUTH LAKES

 WOODSIDE GARDENER
 Sustainable Gardening
 RHS QUALIFIED
WWW.WOODSIDEGARDENER.COM
INFO@WOODSIDEGARDENER.COM
 07533623208 / 07557343508

FISHWICKS FUNERAL SERVICE
 Established 1935
 Beetham Hall Beetham
015395 63108
 Independent Family Business
 24hr service
www.fishwicksfunerals.co.uk

BEETHAM HALL CREMATORIUM
 Established 2017
015395 65363
www.beethamhall.co.uk

MOSSDALE SERVICE STATION



A6, Hale Moss
 tel: 01524 781381
 Petrol, Car Wash
TEXACO Nisa Store open
 6am (Sunday 7am) - 8pm
 Wines & Beers, Fresh Produce,
 Groceries, Hot & Cold Drinks,
 National Lottery 

Join The Friends of Beetham Church by picking up a form in church or downloading from our website, and supporting our fundraising to maintain this historic church

 **PLUGGED IN ELECTRICIANS**
 Customers first - Transparent pricing
 Clear communication
01524 932 524
pluggedinelectricians.co.uk

MARK ECCLES
 ME Electrical Contractors
 All aspects of electrical work undertaken
07866 510 079

NEIL TAYLOR
 Painter, Decorator & Paperhanger
 Tel: 015395 - 64411
 Mobile: 07778 - 467521

Robb Home improvements and Landscaping
 Specialising in fencing, stone walling, paving, garden rooms, lawns and water features
 Bespoke garden design and build
 Free estimates
 Call 07954336176 or 07871878101

Collectable and contemporary
BOOKS BOUGHT
015395 35125
 Single items or whole collections
 Will travel to view (from Allithwaite)
 P.B.F.A. member

FOOTCARE AT HOME
Tracey Garrett BSc MinstChp
 Nail trimming ~ Ingrown nails
 Corns ~ Callus ~ Diabetic foot
 Care and advice
For Home Visit tel 07766 167018

HIGHGATE VETERINARY CLINIC **01539 721344**
 Friendly, caring & professional team
www.highgatevets.com
 173 Highgate and Beeson Rd, Kendal

Graham Pooley WINDOW CLEANER
 1 Castle Riggs, Kendal
01539 - 721981

IAN BRADSHAW
 INTERIOR & EXTERIOR PAINTER & DECORATOR
015395 62089
07968 390396

MARTIN
 PAINTER & DECORATOR
07881 895909
01524 61834
martin.painting.decorating@gmail.com

Gas & Oil Boiler,
 Gas Fire Repairs & Maintenance
 **015395 - 63562**
MARK N. SHAW

 **Chaplows Heating Services**
 Boiler Services
GAS OIL LPG
015395 - 63017
07831 - 223140

 **SOUTH LAKELAND AGE UK**
 For lunch club and exercise class details go to
www.ageuk.org.uk/southlakeland/activities-and-events
 Helpline : 030 300 30003


 The Wheatsheaf
 BEETHAM
 FOUNDED 1809
www.wheatsheafbeetham.com
stay@wheatsheafbeetham.com
 015395 64652

Open
 Wednesday
 to
 Sunday
 11am 'til late

Flowers for all occasions
Woodlands Nurseries
 Crooklands
01539 567273

TONY GIBSON
 SPECIALIST IN:
 - STONEMASONRY -
 - PLASTERING -
 - ALL ASPECTS OF BUILDING -
015395 64702
07815 888 564
www.tgibsonbuilderscumbria.co.uk

 **HAIRSTOP**
 2b Mainstreet, Milnthorpe, LA77PN
HAIR SALON
015395 63586
www.hairstopmilnthorpe.co.uk

L. M. Baverstock
 Ophthalmic Opticians
 The Square, Milnthorpe
015395 - 62633

Irene Taylor Hearing
 - Specialist hearing aid advice
 - Earwax removal by microsuction
 - iPhone compatible hearing aids
 - Invisible hearing aids
 - Hearing protection for shooting, motorcyclists & musicians
 - TV & telephone accessories
 - Home visits
 Salt Pie Lane, Kirkby Lonsdale, LA6 2BH
015242 73589
 Est. 1980 ~ Registered with hcpc
www.irenetaylorhearing.co.uk

CONTACTS FOR THE PARISH OF ST. MICHAEL AND ALL ANGELS, BEETHAM

Priest-in-Charge	The Revd Andrew Norman	015395 62355	revdabn@gmail.com
Assistant Curate	The Revd Hannah Wallace	01524 449035	revhannahwallace@gmail.com
Lay Minister	Chris Roberts	015395 63019	lainyandchris@aol.com
Lay Minister/Churchwarden	Vivien Stirrup	015395 64320	vstirrup7@aol.com
Churchwarden	John Lomax	015395 62648	j.d.lomax@btinternet.com
PCC Treasurer			
Safeguarding Officer	Andrew Skinner	07362 593076	beetham-safeguarding@gmail.com
Gateway Editor	Jenny Marks	015395 62559	jenny.marks@btinternet.com
Beetham CE School	Abi Johnson	015395 62515	head@beetham.cumbria.sch.uk

Please do be in touch with Andrew you would like to receive the parish email, if there is any support or encouragement he can offer, if you would have any questions about services church life or the Christian faith, or if you would like anyone or anything remembered in prayer.

Church Websites

For information about our church and parish, What's On, and church videos please visit our website at www.beethamstmichaelandallangels.co.uk. Full colour versions of this and past editions of The Gateway are also available online. If you would like to receive an email copy please contact jenny.marks@btinternet.com

For more details of the Kent Estuary Mission Community visit the website at www.kentestuarymissioncommunity.com