



Church Heating

As reported in last month's Gateway the installation work on our new boilers was completed in August and awaiting independent commissioning. We are delighted that this has now been successfully carried out, and the heating automatically switched on for the first time for our Mission Community joint service on 14th September. We would like to give our thanks to Keith and Mark from J W Moore & Co for their excellent workmanship and for maintaining their sense of humour throughout a sometimes trying project!

As the focus now moves onto our external Quinquennial work requirements our fundraising continues and thank you for supporting our events such as the Coffee Morning. A reminder that donations can also be made by scanning the QR code, or visit our website for other ways of giving.



St Michael and All Angels, Beetham Harvest Festival



Sunday 5th October

11.00am - Harvest Eucharist

6.00pm - Harvest Hymns and Readings

We will be inviting donations to help support the valued work of our local Milnthorpe Area Food Bank, these can be left at the back of church.

Thank you for your kindness and generosity.



Parish Coffee Morning
Tuesday 7th October in Church,
10.30am-12pm

Please do join us for refreshments and a chat!

All are very welcome, and feel free to bring a friend. There is no charge but any donations will be gratefully received for our church repair and maintenance appeal.



'A Fair Share'
The Bishop of Carlisle's
HARVEST APPEAL 2025

**CHURCH
MISSION
SOCIETY**



Once again we are supporting the work of The Bishop's Harvest Appeal this year, supporting the work of **Christian Aid (in Burkina Faso)** and the work of **The Church Mission Society (in Northern Argentina)**.

www.carlislediocese.org.uk/harvestappeal

As well as inviting support for The Bishop of Carlisle's Harvest Appeal, we are also encouraging physical donations of food for the important and valued work of the

Milnthorpe Area Food Bank

Thank you very much for your help and generosity!

THE GATEWAY

PARISH MAGAZINE OF
ST MICHAEL & ALL ANGELS, BEETHAM

OCTOBER 2025

www.beethamstmichaelandallangels.co.uk

The Nights Are Drawing In

Although October is the tenth month of the year, it is named after the Latin word octo (eight) because it was originally the eighth month in the Roman calendar. October will mean different things to different people. We'll be celebrating harvest by giving thanks for all food production. Many will be looking forward to vibrant autumn colours, abundant apples, frosty mornings and fireside evenings. Some will be eagerly anticipating the full moon on 6/7 October 2025, which will be this year's Hunter's Moon, Harvest Moon and a supermoon. Saturn will be close by as well, which should also be visible to the naked eye if we have a clear night.

Whatever your October interests, one thing that affects us all is that the nights are drawing in. And if you think that the nights have been drawing in much quicker recently, then you are correct. We all know that sunset occurs earlier each day as we move from the longest day in June to the shortest day in December. However, I was amazed to see the pattern of daily change when I first had a closer look at the actual sunset times.

For the final few days of June that follow the summer solstice, sunset does indeed begin to occur earlier, but only averaging 6 seconds a day so it isn't really noticeable. In July the rate increases and sunset averages a bit over a minute earlier per day. In August, September and October, the average daily change is over 2 minutes earlier per day, peaking at about 3 minutes a day around the autumn equinox on 22nd September. That's more than a quarter of an hour a week and is when we really notice the change. In November the pace slackens and sunset averages just under a minute and a half earlier each day. December sees comparatively little change and sunset averages about 13 seconds earlier each day until the earliest sunset of the year.

For anyone who is interested in the actual sunset times, the table below shows 2025 sunset times for Beetham at the beginning and at the end of each month between the latest sunset in June and the earliest sunset in December.

Month	Sunset Time at Beginning of Month	Sunset Time at End of Month	Difference (in hours and minutes)	Number of Month Days Counted	Average Daily Change (in minutes)
June	21:48	21:47	00:01	10	00:06
July	21:47	21:11	00:36	31	01:10
August	21:09	20:04	01:05	31	02:06
September	20:01	18:49	01:12	30	02:24
October	18:46	16:37	*01:09	31	02:14
November	16:35	15:52	00:43	30	01:26
December	15:51	15:47	00:04	18	00:13

** difference adjusted because of the hour change*

Careful readers may have noticed that only 18 days have been counted in December. That's because sunset times in December start to go later a few days before the arrival of the shortest day. But that's another story. Very best wishes for whatever you get up to this October.

Andy MacLeod

Letter from The Revd Andrew Norman

Dear friends,

One of the many gifts that the Christian year gives us is a rhythm and pattern for the changing of the seasons. An opportunity to acknowledge and celebrate God's involvement and interest in all parts of life, our everyday tasks and our daily business – however mundane or ordinary they might seem. There is nothing – so the scriptures tell us – that is off limits to the care and concern of the Almighty, and whilst this can often be a difficult thing for us to fathom, it offers the promise of hope and assurance as we face the joys and sorrows that life offers. As we read in the Old Testament book of Ecclesiastes, 'For everything there is a season and a time for every matter under heaven'.

This awareness of God's provision is perhaps best captured, at least in the popular imagination, by the autumnal celebrations of Harvest. The time in the year where we, with prayerful intention and thanksgiving, are encouraged and given opportunity to give thanks for all the good things that surround us. For many of us this pattern of gratitude, as the days get shorter and the colder weather begins arrives, will have been established from an early age. The concept of 'Harvest Festival' still something that holds a prominent place in our national and cultural imagination, regardless of whether we live in town our country, village or city.

Indeed, aside from Christmas and Easter, perhaps my most formative experiences of 'going to church' as a child were the traditions associated with both 'bringing in' and 'giving thanks' for the Harvest. Not least the annual tradition of putting together a box of fresh fruit and vegetables at home that would duly be presented at the altar on Harvest Sunday. The tangible, and very real, reminder that – whilst it is easy to forget – it is from God that all good things come.

Although, with the passing of years, the nature of our celebrations might have changed, and methods of harvest and food sourcing and production have dramatically altered. It is still good, in a world of technological advancement and rampant consumerism, to have opportunity to remember and pray for all those on whom we depend for our daily bread. All those involved in a myriad of different ways, from farm to fork, of ensuring that our needs are supplied, whilst praying too that the earth's bounty, riches and resources might be more equitably shared and distributed.

This, of course, is something that we are aware of both on a global, national and local scale. The effects of climate change in shaping the suitability of crops and its impact on the mass movement of peoples across the world, the despairing rise in the numbers trapped by poverty across the country, and the ongoing demand for those charitable endeavours locally that seek to support those in need of practical help and nourishment. Harvest-time brings the recognition, if any further prompt was needed, that much more work is needed if we are to live in a world where every human life, made in the image of God, is accorded equal value and worth. As Mahatma Gandhi once, memorably, remarked: 'The world has enough for everyone's need, but not enough for everyone's greed'.

This vision, of course, is part and parcel of what Jesus in the gospels called 'the Kingdom of God' – not a defined place or location, but a reality in which we are all invited to live, in which no-one can be forgotten and where all can find a welcome. It is this Kingdom that we pray for as we look to give thanks this harvest-time, a Kingdom of justice and righteousness, of peace and equity, of compassionate service and restored relationships, of liberty and love.

With every good wish and prayer for God's blessing,

As ever,

Andrew

Christmas cards

This year's Christmas cards are now available at the back of the church, along with notelets and cards for other occasions. A reminder that the new illustrated Church Guide is also on sale, and an updated edition of 'Those Who Served from Beetham in the Great War' compiled by John Lomax



St Michael & All Angels Beetham Church Services for October 2025

Date	Time	Service
Weds 1st Oct	10am	BCP* Holy Communion
Sun 5th	11am	Harvest Eucharist
	6pm	Harvest Songs & Praise
Sun 12th	11am	Parish Eucharist
	6pm	BCP Evensong
Sun 19th	11am	Parish Eucharist
	6pm	BCP Evensong
Sun 26th	11am	Patronal Eucharist
	6pm	BCP Evensong

Please see weekly pewsheet or website for further details

*Book of Common Prayer

REST & RESTORE
A time of prayer for healing & wholeness
St James Church Arnside
6:15 - 7:00PM
Contact: revhannahwallace@gmail.com 01524 449 035

ARNSIDE
crafts & activities food (including a meal) fun stories & music
Messy Church
when: Friday 10th October 2025
time: 3.30pm - 5.30pm
at: Arnside Methodist Church

Grief is hard. Death can impact all of life.
The Bereavement Journey
a place to talk
for **anyone** bereaved **anytime**
7 sessions of films and discussions
Topics include:
• Attachment, separation and loss
• The pain and responses of grief
• Anger and guilt
• Coping with others' reactions
• Delayed and suppressed grief
• Adjusting to change
• Moving forward healthily
• Faith questions - a Christian perspective (optional last session)
St Thomas' Church, Milnthorpe
Thursdays | 1.00 - 3.00 p.m.
2nd, 9th, 16th, 23rd, 30th October
6th, 13th November
Booking is necessary.
For more information and/or to book, please contact Lesley:
dianalesley@btinternet.com / 01524 951566
To find out more, please visit: www.thebereavementjourney.org

The Bible Course
Explore the BIG story
An eight-session course helping us explore the world's bestseller...
Wednesday
8th, 15th, 22nd, 29th October
5th, 12th, 19th, 26th November
12.30 - 2.30pm
Arnside Methodist Church Hall
An opportunity to learn more about the Bible (journeying from Genesis to Revelation) in conversation and company with others.
Please, if you would like to, bring some lunch!
Fairtrade refreshments will be served.
The Bible Course has been prepared by The Bible Society.

St Michael and All Angels, Beetham

All Souls Service

Sunday 2nd November at 6.00pm



An opportunity to remember and give thanks to God for all those whom we love but see no longer.

If you would a loved one remembered by name in prayer at this service, please write their name on the list of names at the back of church. Thank you



Baptism

Saturday 20th September
Edward Rupert Collins

We welcome him into the Beetham Church family

Kent Estuary Mission Community Gathering
Thank you to all who supported the KEMC joint service at Beetham on Sunday 14th September. The next joint service will be at Arnside Methodist Church on Sunday 7th December

'AREN'T YOU SCARED OF GROWING OLDER?
NO BECAUSE MY MOM LEARNED HOW TO PLAY THE BASS
GUITAR IN HER LATE 60S. BOUGHT HERSELF A RED
GUITAR, AND NOW I GO WATCH MY PARENTS PLAY IN A
BAND TOGETHER AT 70 AND 80. SHE TAUGHT ME THERE IS
NO EXPIRATION DATE ON GETTING COOLER
OR MORE INTERESTING.....'
from 'Embracing Aging, Finding inspiration in music'. August 8th 2025 tiktok

Well dear reader, it is not just me extolling the virtues of music in all its forms. At this point in time, music is needed more than ever. It brings us together, and for a short time every week we can step off the roller coaster most of us did not see coming. We can just be, and enjoy being.

"MUSIC KNOWS NO BARRIER OF AGE OR CULTURE.
IT ISN'T ABOUT BEING POLITICALLY CORRECT OR EVEN MAKING A STATEMENT.
MUSIC IS WHAT APPEALS TO THE EARS AND TOUCHES YOUR SOUL"
A.R. Rahman

There is no better time than the coming season to enjoy music. All familiar comforting tunes. Just come along and have a listen, or join in. It really will make a difference to your life. A warm, slightly crazy welcome awaits you. It is time to make music, to make time for it. It is rather like our pets, music gives far more than it takes. It has done so much for me and it will for you. So get in touchif it helps we play Mariah Carey.

We hope to welcome you soon
 Much love as always,
 Tess

"WHAT IS A TREE'S FAVOURITE SONG IN AUTUMN?"
"DON'T STOP BE - LEAFIN"
 07725 580095 for more information

Winter at Sizergh

21 November –
 24 December, 12–8pm

Winter at Sizergh is back – book tickets from July, and look forward to winter wonder for the whole family with an enchanting light trail, Christmas in the house and self-led festive crafts.

Book your tickets, starting from £4

www.nationaltrust.org.uk/winter-at-sizergh

SizerghCastleNT
 @NTLakeDistrict
 @SizerghCastleNT

Kendal South Choir
 Conducted by Geoffrey Field

A Season to Sing

Saturday 6th December at 7.30pm
 Stricklandgate Methodist Church, Kendal

Andy Plowman (organ)
 AnnaKate Pearson (harp)

making music
 ticket source

A Season to Sing by Joanna Forbes L'Estrange
 A setting of Vivaldi's *The Four Seasons* co-commissioned by Kendal South Choir
A Ceremony of Carols by Benjamin Britten
Ring Out, Wild Bells by Percy Fletcher
 and traditional Christmas Carols for audience participation
 Tickets £15 (under 18s free) via TicketSource, choir members, or kendalsouthchoir.weebly.com

Harvest Suppers by Dianne Lomax

The early part of the 21st century saw no Harvest Supper in Beetham until the renovation of the Beetham Corn Mill, which included the Corn Mill Barn in 2008. What could have been more appropriate than the thrill of enjoying a Harvest Supper in a Corn Mill Barn, an event that has been held every Harvest Festival and Shrove Tuesday since and will be in the future, with the sad exceptions in October 2020 - when *'Harvest At Home'* was shown on You Tube - and cancelled in 2021, both owing to Covid. Thus, on the 3rd October 2008, the Church resurrected the Harvest Supper. As there was no kitchen in the Barn, the supper was at first ordered from a local Tea Room, and then deliciously provided (with seconds) by Alison Thompson! Wine and drinks were provided and 'A Grand Raffle' was held.

And so began twenty plus years of fantastic entertainment provided by the 'Beetham Thespians', brilliantly led by retired Vicar, Canon Sandy Lofthouse. Sandy wrote and directed our hilarious, sketches, plays, singing and dancing supported by Margaret Cutress and later Geoff Field on the piano. Sandy's presentations ranged from sketches involving Ronnie Barker and Scouting, *'The PCC'*, *'Murder on Mardi Gras'*, the *'Beetham Bees'* which had found a home in the chimney of the Vestry and not to mention the men in green tights in *'Robin and the Green Men'*.

On the occasion of Queen Elizabeth's Golden Jubilee, her accession was celebrated on *'The Wireless'*, while Charles Dickens was remembered with a rendition of the well known *'Harvest Carol'*. The loss of the Church cleaner 'Henry' prompted our own *'Downton Abbey'* with two of our members demonstrating their desire to go on *'Strictly'*! The local Prisoner of War camp inspired Sandy into *'The Great Escape'*, with dancing! We were able to use two of Sandy's scripts from the past confronting the Roman army by going *'Up the Roman Wall'*, and going 'Chexit' from the Papal Union in 1580 in *'The Masque of The Radish'* - with more dancing!

To remember William Shakespeare in 2014, Sandy began to write his version of 'Hamlet', but with great sadness we lost Sandy while he was writing 'Thelma'. To fulfil his wish, we presented *'A Harvest Much Ado About Nothing'*, trusting that not too many of the audience had "but slumbered here"! A lighter side of World War 2 was explored with the evacuation of *'St Lioba's School'* to Beetham, where practise for 'Strictly' was again on the curriculum, as it was when we visited Rene's café, where you had to *'Listen very carefully, we shall say this only once'*. An excellent *'Victorian Vaudeville'* was held in the presence of HM Queen Victoria herself in 2019 before covid halted everything. When we all emerged from those dark covid days to the B Factor again, holidays were on the agenda and folk were encouraged to spend time at *'Beeplins Holiday Camp'* with mystery afoot when 'the pews disappeared from the Church'! The following year Games and Sport were on again, if *'For one night only - Team Great Beetham'*. However, 'time and tide wait for no man' and the cancellation of Equity Cards of the entire cast of last year's performance requires something new this year, so join us on 10th October.

A member of the audience wrote after one of the Suppers: *".....such a super feast in such a relaxed and happy fashion. The team gave us such splendid entertainment sealed by ... laughter which rang in my ears louder than the Tower Bells! I loved every minute of it."*

School Corner

We've had a fantastic start to the new school year at Beetham CE Primary School. After the summer break, everyone returned full of energy and enthusiasm, ready to learn and embrace the opportunities the year ahead will bring.

We're delighted to have welcomed several new pupils across the school, including in our Preschool, which is now celebrating its first birthday! It's been a wonderful year of growth, and we're proud to be giving our youngest learners the very best start to their school journey.

It's been lovely to see all our children settling into their new year groups with confidence. Class 3 have already begun their weekly swimming lessons at Carnforth Pool, where they're developing both their stroke technique and vital survival skills. At Beetham, all children from Year 1 to Year 6 swim each year, and by the time they leave us, most are able to swim the statutory 25 metres unaided.

This year, we're also making use of the hall at Milnthorpe Primary School for gymnastics. The additional space and equipment allow our older pupils in Classes 2 and 3 to continue developing their physical skills. Thanks to our minibuses, we're able to access these fantastic facilities and enrich our curriculum even further.

Last week, Classes 2 and 3 visited Beetham Nurseries to sing at their Dementia Awareness Day. The children performed traditional favourites such as You Are My Sunshine, Roll Out the Barrel, and She'll Be Coming Round the Mountain. A big thank you to everyone who helped organise the event and supported our children's performance.

Meanwhile, Class 1 have been exploring the local area as part of their topic on the village. They've enjoyed getting out and about, putting their learning into practice and discovering more about the community they live in.

We continue to run our popular Stay and Play sessions every Friday morning from 9am to 10am. These sessions are free and include snacks and drinks for both adults and children. Weather permitting, we hold the sessions outside on the school field, but when needed, we move indoors to our Preschool space. Look out on Facebook for our upcoming themed days and where the sessions will be held—everyone is welcome!

We're looking forward to a busy and exciting term ahead!

Best wishes, Abi Johnson



Beetham CE Primary School
2 years old through to Year 6

Beetham CE Primary School provides education and learning for children from the age of 2 years old.

We are a loving, inquisitive and nurturing community, where all are welcomed, encouraged and celebrated.

Come and see our wonderful school in action!
Contact our office to make an appointment.

☎ **015395 62515**
admin@beetham.cumbria.sch.uk

🌐 Visit us:
<https://beethamschool.co.uk/>

📱 **BeethamSchool**

Wrap around from 8am to 5.30pm
from 3 years old.

Beetham C of E Primary School

Winter Fair
Saturday
29th November 2025
11am-1pm
at Beetham School

Calling all sellers, makers, bakers, crafters & artisans!

Book your stall today!

Stalls will be setup inside Beetham School

Contact friendsofbeethamschool@gmail.com to reserve a stall

Updates from Beetham WI

Whoops! Forgot to mention in last month's Gateway how much the WI members enjoyed being part of the village Sports Day in July. Thank you to all members who baked, prepared and sold the cakes - and to everyone who bought them.

Some of us enjoyed a late summer visit to Holker Hall which included a very chatty lunch!

'Puzzle Amazement' at our September meeting when Philip Burley gave an interesting and entertaining talk including the history of puzzles. We had lots of fun trying to unravel the wide variety of puzzles he brought with him, most of which we'd never seen before.

Sue & Jeanette contributed to the wonderful array of art and craftwork in the WI marque at the Westmorland County Show and were awarded Gold stars for their hand-knitted items and photograph! Our Secretary, Jeanette, did a sterling job of working behind the scenes in preparation for the Show and acting as a Steward at the actual event.

We won't be at The Wheatsheaf for our October meeting as we are away on a 'Members only' craft



session where we will be guided through the skills of Lino Printing.

But, we will be back in The Wheatsheaf on Thursday 13th November (2-4pm) for an interesting talk about fungi by Helen Speed entitled 'Me and Beatrix Potter'. This is an open event so visitors are very welcome. A small contribution would be appreciated and will include tea or coffee.

If you are interested in coming to 'try us out' at one of open monthly sessions at The Wheatsheaf - or would like more information about the WI - contact Jeanette at beethamwi@gmail.com

theWI
INSPIRING WOMEN

Heydays
Care & Support Services
LIVE-IN CARE
Enjoy living independently
at home for longer

015395 52548

Your
personalised
alternative
to residential
care



- Remain at home close to friends, family & your local community
- Peace of mind that your trusted, fully-trained carer is with you day and night
- Full support from our professionally managed team with care plans & regular assessments

Contact our friendly team:
Call us: 015395 52548 | Email: info@heydayscare.co.uk
or visit our website: heydayscare.co.uk

Beetham Village Facebook

**A dedicated facebook group
for Beetham village**

**Search for
"Beetham Village Cumbria"**

Kent Estuary
Est. 1979
24 Hours. Travel
Competitive Rates

Local family private hire
company founded in 1979

All drivers, male and female, have
level 2 nvq in road vehicle
passenger driving and are fully
licensed with SLDC.

We pride ourselves in having a
friendly and reliable service

For a quote please contact us on
015395 62917 or
07974 108501



MILL TOUR & DEMONSTRATION

Friday 3rd October, 11.30am - 1pm

BAKING WITH KATE

Wednesday 22nd October, 11am - 4pm

CRAFTING WITH ERIKA

Monday 6th October, 1 - 4pm

CRAFTERNOON

Tuesday 28th October, 1 - 4pm

POWSOWDIE

Wednesday 15th October, 11am - 2pm

FOOD FOR THOUGHT

Sunday 26th October, 10am - 2.30pm

FOODIE FRIDAY

Friday 3rd October, 1pm - 3pm

Heron Corn Mill, Mill Lane, Beetham, LA7 7PQ
015395 64271 - info@heronmill.org - www.heronmill.org

HERON CORN MILL

MILLING DEMONSTRATION & TOUR



FRIDAY 3RD OCTOBER
11:30AM - 1:00PM

£6.50 ADULTS / CHILDREN FREE

CALL IN, PHONE 015395 64271

OR BOOK ONLINE <http://hcmshop.sumup.link>

Following on from 1pm-3pm in the Barn (FREE ENTRY)

FOODIE FRIDAY MINI MARKET

Purchase our fresh flour, fresh breads, cakes,
savouries and honey!

MILL LANE, BEETHAM, LA7 7PQ

Beetham Parish Council

Next meeting will be in

Beetham CE School

Monday 6th October at 7pm

Members of the public are welcome to attend
Previous minutes and details of the Councillors can be
found on the website at www.beetham-pc.gov.uk

Quest Lecture Group

A friendly group, meeting at the
Athenaeum village hall, Leasgill, LA7 7ET

Thursday 9 Oct ~ David Evans

'Morecambe Landladies'

Thursday 23 Oct ~ Colin Aldred

'Aerial Photography'

All talks start at 10:00am. Annual subscription for 12 meetings,
including refreshments, is £18. Guest tickets for individual
meetings £3. No need to pre-book.

Enquiries to Adrian Tayler: aptayler@gmail.com

Burton in Kendal Educational Foundation

Charity Reg. No. 526953

The Burton in Kendal Educational Foundation provides small
grants to Sixth Form, College, University Students & Apprentices.
To qualify you need to have lived in one of the following Civil
Parishes for at least 2 years and be under 25 years of age:-

**Burton in Kendal, Holme, Preston Patrick, Dalton,
the Hamlet of Holmescales, Beetham, Meathop,
Ulpha, Witherslack or Arnside**

For an application form or further information please contact Mrs
Marion Robinson: mrvob23@gmail.com 01524 784918 or 07531
575663. The deadline for the return of grant application forms for
the 2025/2026 academic year is 31st October 2025

SILVERDALE RENAISSANCE PRESENTS

I Fagiolini

DIRECTED BY ROBERT HOLLINGWORTH

'MONTEVERDI - FIRE AND ICE'

Perfect mini-dramas from the master of the madrigal

Saturday 4 October 2025 at 7.30PM

St John's Church, Silverdale, LA5 0RJ

TICKETS £10-£20 (£5 under 25) <https://www.trybooking.com/uk/FELD>



art
dance
the **HERON** theatre
music
film

October What's On

Friday 3rd Oct ~ A Complete Unknown (Film)

Sunday 5th Oct ~ K Shoes Male Voice Choir (Music)

Friday 10th Oct ~ Divorced, Beheaded, Died (Drama)

Tuesday 14th Oct ~ Inter Alia (National Theatre Live)

Saturday 18th Oct ~ Off the Rails (Jazz)

Friday 31st Oct ~ The Salt Path (Film)

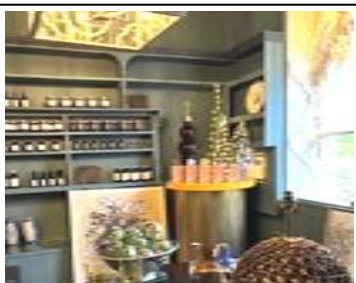
Book tickets online www.theherontheatre.com
email: boxoffice@theherontheatre.com ~ tel: 015395 64283

Evening performances start at 7.30pm. Sunday music 2.30pm.

National Theatre Live 7.30pm. Refreshments available

The Heron Theatre, Stanley Street, Beetham, LA7 7AS

The Gateway deadline
Items for the November edition should be submitted by Monday 27th October
 Please email articles to jenny.marks@btinternet.com
 View deadlines online at www.beethamstmichaelandallangels.co.uk
 Would you like to advertise with us?
 Space in all ten issues can cost as low as £33!
 To book call John Lomax on 015395 62648 or email j.d.lomax@btinternet.com



Edith Anne
 Leslie welcomes you to her interiors shop and cafe in the Old Beetham Post Office
Cafe open Saturdays, Sundays and Bank Holiday Mondays 10am—4pm
 See noticeboard for shop opening times

HOUGHTONS 
HOME IMPROVEMENT CENTRE
 Park Road, Milnthorpe
 T: 015395 63904
 Open 7 days
 Trade & Retail
 Large stock areas covering
 Commercial & DIY Power Tools
 Hardware
 Electrical & Household Goods
 Gardening Tools & Equipment
 Timber, Plumbing, Glass, Key Cutting
 Paints, Wallpapers & Decorating sundries
 Paint Mixing Service
 Gifts & Cards for all occasions

WOODSIDE WALKS
Dog Walking & Day Care Service
 Fully Insured
 GPS Collars
 10 Yrs Experience
 Countryside Walks
 Contact Theo on 07880 237033 to discuss your requirements

PARKIN and JACKSON
Monumental Masons
 New Memorials
 Second Inscriptions, Repaints,
 Regilds and Renovations

 Visit the showroom on
 14 APPLEBY ROAD, KENDAL LA9 6ES
 Telephone: 01539 722838
 Free estimates & brochure on request
www.parkinandjackson.co.uk
 email: info@parkinandjackson.co.uk

 **Carnforth Chiropody**
"Helping you and your feet go a long way"
 Comprehensive professional, friendly and effective chiropody & podiatry services. Expert help in our welcoming treatment room, conveniently situated in Carnforth
 Routine footcare & hygiene issues • Long term health conditions
 Resolving pain and posture problems • Nail surgery
 Web: www.carnforthchiropodist.co.uk
 Mobile: 07725 300290
 Address: 28 Langdale Road, Carnforth, Lancashire LA5 9AU

Sustainable Gardening Services
 SOUTH LAKES

 WOODSIDE GARDENER
 Sustainable Gardening
 RHS QUALIFIED
WWW.WOODSIDEGARDENER.COM
INFO@WOODSIDEGARDENER.COM
 07533623208 / 07557343508

FISHWICKS FUNERAL SERVICE
 Established 1935
 Beetham Hall Beetham
015395 63108
 Independent Family Business
 24hr service
www.fishwicksfunerals.co.uk

BEETHAM HALL CREMATORIUM
 Established 2017
015395 65363
www.beethamhall.co.uk

MOSSDALE SERVICE STATION
 A6, Hale Moss
 tel: 01524 781381
 Petrol, Car Wash
TEXACO Nisa Store open
 6am (Sunday 7am) - 8pm
 Wines & Beers, Fresh Produce,
 Groceries, Hot & Cold Drinks,
 National Lottery 

Join The Friends
 of Beetham Church
 by picking up a form in church
 or downloading from our
 website, and supporting our
 fundraising to maintain this
 historic church

 **PLUGGED IN**
 ELECTRICIANS
 Customers first - Transparent pricing
 Clear communication
01524 932 524
pluggedinelectricians.co.uk

MARK ECCLES
 ME Electrical Contractors
 All aspects of electrical work undertaken
07866 510 079

NEIL TAYLOR
 Painter, Decorator
 & Paperhanger
 Tel: 015395 - 64411
 Mobile: 07778 - 467521

Robb Home improvements and Landscaping
 Specialising in fencing, stone walling,
 paving, garden rooms, lawns and
 water features
 Bespoke garden design and build
 Free estimates
 Call 07954336176
 or 07871878101

Collectable and contemporary
BOOKS BOUGHT
015395 35125
 Single items or whole collections
 Will travel to view (from Allithwaite)
 P.B.F.A. member

FOOTCARE AT HOME
Tracey Garrett BSc MinstChp
 Nail trimming ~ Ingrown nails
 Corns ~ Callus ~ Diabetic foot
 Care and advice
For Home Visit tel 07766 167018

HIGHGATE VETERINARY CLINIC **01539 721344**
 Friendly, caring & professional team
www.highgatevets.com
 173 Highgate and Beeson Rd, Kendal

Graham Pooley WINDOW CLEANER
 1 Castle Riggs, Kendal
01539 - 721981

IAN BRADSHAW
 INTERIOR & EXTERIOR PAINTER & DECORATOR
015395 62089
07968 390396

MARTIN
 PAINTER & DECORATOR
07881 895909
01524 61834
martin.painting.decorating@gmail.com

Gas & Oil Boiler,
 Gas Fire Repairs & Maintenance
 **015395 - 63562**
MARK N. SHAW

Chaplows Heating Services
 Boiler Services
GAS OIL LPG
015395 - 63017
07831 - 223140

 **SOUTH LAKELAND AGE UK**
 For lunch club and exercise class details go to
www.ageuk.org.uk/southlakeland/activities-and-events
 Helpline : 030 300 30003


 The Wheatsheaf
 BEETHAM
 FOUNDED 1809
www.wheatsheafbeetham.com
stay@wheatsheafbeetham.com
015395 64652

Flowers for all occasions
Woodlands Nurseries
 Crooklands
01539 567273

TONY GIBSON
 SPECIALIST IN:
 - STONEMASONRY -
 - PLASTERING -
 - ALL ASPECTS OF BUILDING -
015395 64702
07815 888 564
www.tgibsonbuilderscumbria.co.uk

 **HAIRSTOP**
 2b Mainstreet, Milnthorpe, LA77PN
HAIR SALON
015395 63586
www.hairstopmilnthorpe.co.uk

L. M. Baverstock
 Ophthalmic Opticians
 The Square, Milnthorpe
015395 - 62633

Irene Taylor Hearing
 - Specialist hearing aid advice
 - Earwax removal by microsuction
 - iPhone compatible hearing aids
 - Invisible hearing aids
 - Hearing protection for shooting, motorcyclists & musicians
 - TV & telephone accessories
 - Home visits
 Salt Pie Lane, Kirkby Lonsdale, LA6 2BH
015242 73589
 Est. 1980 ~ Registered with hcpc
www.irenetaylorhearing.co.uk

CONTACTS FOR THE PARISH OF ST. MICHAEL AND ALL ANGELS, BEETHAM

Priest-in-Charge	The Revd Andrew Norman	015395 62355	revdabn@gmail.com
Assistant Curate	The Revd Hannah Wallace	01524 449035	revhannahwallace@gmail.com
Lay Minister	Chris Roberts	015395 63019	lainyandchris@aol.com
Lay Minister/Churchwarden	Vivien Stirrup	015395 64320	vstirrup7@aol.com
Churchwarden	John Lomax	015395 62648	j.d.lomax@btinternet.com
PCC Treasurer			
Safeguarding Officer	Andrew Skinner	07362 593076	beetham-safeguarding@gmail.com
Gateway Editor	Jenny Marks	015395 62559	jenny.marks@btinternet.com
Beetham CE School	Abi Johnson	015395 62515	head@beetham.cumbria.sch.uk

Please do be in touch with Andrew you would like to receive the parish email, if there is any support or encouragement he can offer, if you would have any questions about services church life or the Christian faith, or if you would like anyone or anything remembered in prayer.

Church Websites
 For information about our church and parish, What's On, and church videos please visit our website at www.beethamstmichaelandallangels.co.uk. Full colour versions of this and past editions of The Gateway are also available online. If you would like to receive an email copy please contact jenny.marks@btinternet.com
 For more details of the Kent Estuary Mission Community visit the website at www.kentestuarymissioncommunity.com