

# A Taste of the Landscape

Arnside and Silverdale AONB  
Local Food and Produce Festival  
10-26 July 2015

*Celebrating a wealth of local products in the AONB,  
from honey to apples; salt-marsh lamb to veggies;  
beef to berries; and much more*

- \* AONB Bake-Off with WI judge Dorrie Galbraith & prizes from Heron Corn Mill & Booths
- \* Silverdale Local Food Festival with local produce, pulled pork cookery, & RSPB Leighton Moss chefs
- \* Butterfly Spotting Ramble, finishing at the Old School Brewery in Warton
- \* Wild Herb Ramble, finishing at The Wolfhouse Kitchen cake emporium
- \* The Coppice Coop greenwood craft making, a charcoal burn, & hands on workshops
- \* Lancaster Beekeepers Open Day at Yealand Apiary

*For details of these and other events  
during the two week festival see  
[www.arnsidesilverdaleaonb.org.uk/whats-on](http://www.arnsidesilverdaleaonb.org.uk/whats-on)*

## COACH TRIP: Newby Hall & Gardens

North Yorkshire  
Wednesday 2nd September



### Coach Trip to Newby Hall & Gardens

One of Europe's longest double herbaceous borders at 140 metres long. Award Winning Gardens - 25 acres full of rare and beautiful plants; The Hall, built under the guidance of Sir Christopher Wren, is one of Britain's finest Adam Houses, including the Gobelins Tapestry Room, renowned classical statuary and some of Chippendale's finest furniture. The house also boasts an unusual collection of chamber pots!

The house tours (included) are at either 12 noon or 2pm, please advise your preference when booking.

Depart our car park at 9.00am; depart Newby Hall at 4.30pm

The cost for coach travel & entrance into the  
House & Gardens is £29.95

Advanced booking is essential. Book by calling 015395 63630  
or purchasing your travel ticket from the Information Desk

**Open 7 days a week.**  
9.00-5.30, Sunday 10.30-4.30.  
We are on the A6  
one mile south of Milnthorpe

**BEETHAM  
NURSERIES**  
PLANT, GARDEN CENTRE, CAFE & FOOD SHOP

015395 63630 :: [www.beethamnurseries.co.uk](http://www.beethamnurseries.co.uk)

For when you're looking for something different...

RELAX, DINE AND UNWIND IN AN AREA



THE  
WHEATSHEAF  
AT  
BEETHAM

OF OUTSTANDING NATURAL BEAUTY

• Inn • Food • Accommodation • Gift Shop

Beetham, nr Milnthorpe, Cumbria, LA7 7AL

OUR FAMOUS ONE PENNY MENU

1 penny starters or

1 penny sweets

*Pay only a penny for your starter or  
a penny for your sweet when you buy a  
main course meal from our special menu*

*Available 7 days a week*

Telephone: 015395 62123

Email: [info@wheatshafbeetham.com](mailto:info@wheatshafbeetham.com)

[www.wheatshafbeetham.com](http://www.wheatshafbeetham.com)

## LAKELAND FIREPLACES

Est 1993

Bespoke stone  
fireplaces

Cast iron radiators

Full installation  
service

Period property  
specialists



146 Highgate, Kendal, Cumbria LA9 4HW

Tel: 01539 731010

# THE GATEWAY



PARISH CHURCH OF ST. MICHAEL AND ALL ANGELS, BEETHAM

LINDA'S LETTER

JULY/AUGUST 2015

***Vanity of vanities! All is vanity. What do people gain from all their toil at which they toil under the sun? A generation goes and a generation comes, but the earth remains forever. I saw all the deeds that are done under the sun; and see, all is vanity and a chasing after wind. Ecclesiastes 1.1-4 & 14***

At last the weather has started to improve and at the moment the view from my kitchen window is of a golden meadow – brought about by an abundant crop of buttercups this year. Spring has completed her task, the hedgerow and fields are in full bloom. Mid-summers day has come and gone and it's hard to believe that the year is already half spent. How quickly time passes as the seasons and life rush on.

I'm reminded of a famous Zen story of a man who is standing beside a track, and from the distance appears a cloud of dust in the middle of which is a man riding a horse that is galloping at breakneck speed. As the rider goes by, the standing man, excited by the sight of one racing so purposefully and wondering whether he should not follow, shouts out 'where are you going?' And the rider replies: 'I don't know - ask the horse.' We might laugh at the silliness of the rider but the story has a serious side; it is there to make us question just who or what is driving us? Life is precious, life needs to be savoured, slow down, step back - don't be at the mercy of the galloping horse.

Mid-summer is the tipping point of the year. July and August, if we are fortunate enough, offer us a brief opportunity for a change of pace. When we use Summer to take holidays, we find the walls of habit and routine - our natural reference-points - removed. We are presented with fresh opportunities for growth, deepened awareness and even understanding. New horizons restore our vision and open up to us the possibilities of other directions, a better perspective for the next stage of the journey - whatever that journey may bring.

The late Rabbi Alvin Fine wrote about **The Pathway Through Life**; this is sometimes recited during the Yom Kippur evening service:

**Birth is a beginning and death a destination  
But life is a journey, a going – a growing  
From stage to stage.  
From childhood to maturity and youth to age.  
From innocence to awareness and ignorance to knowing;  
From foolishness to discretion and then perhaps to wisdom.  
From weakness to strength or strength to weakness –  
And, often back again.  
From health to sickness and back we pray, to health again.  
From offence to forgiveness, from loneliness to love,  
From joy to gratitude, from pain to compassion,  
And grief to understanding – from fear to faith.  
From defeat to defeat to defeat – until, looking backward or ahead,  
We see that victory lies not at some high place along the way,  
But in having made the journey, stage by stage  
A sacred pilgrimage**

Sometimes our lives get better and better, but sometimes they don't. Life, for even the most successful or righteous of us, is often a series of defeats. But even with those defeats, life is still precious. Living itself is a victory. Our sacred pilgrimage.

**Blessings, Revd Linda**



<p><b>WOODCLOSE PRIVATE HIRE BEETHAM</b></p> <p>Contact Colin and Dorothy <b>015395 63303</b> Mobile 07903 161602</p> <p><b>AIR CONDITIONING</b> <b>WHEELCHAIR ACCESSIBLE</b> <b>SEATING UP TO 8 PASSENGERS</b></p>	<p>CAROLINE HANDY N.N.E.B REGISTERED CHILDMINDER BEETHAM</p> <p>Please phone for more information <b>015395 62352</b></p>	<p><b>C. M. SIGNS</b> Your local time-served sign-writing specialists <b>015395 - 63000</b></p>	<p><b>CREATIVE SEAFOODS</b> Lovely fresh and smoked fish &amp; shellfish delivered to your door weekly. <i>Ethically sound &amp; nicely packaged. Ready for eating now or freezing.</i></p> <p>for details, contact <b>NATHAN LUSTED</b> <b>0750196 7000</b> info@creativeseafoods.co.uk</p>
<p>Beetham CE School <b>Toddler Group</b></p> <p>Every Friday at 1.30pm in the school</p> <p><b>Play, Dance and Fun!</b></p> <p>All Babies &amp; Toddlers Welcome</p>		<p><b>OLIVE TREE EATERY</b> MILNTHORPE <b>015395 63233</b></p> <p>Open daily 8am - 5.30pm Breakfast delivery service Extensive gluten free menu Outside catering and bar available</p>	<p><b>BED AND BREAKFAST</b> Barn Close, Beetham Peaceful setting on edge of village www.nwbirds.co.uk/ bed-and-breakfast.htm Anne Robinson 015395 63191</p>
<p><b>Tree Care</b> Qualified Arborist Tree Felling · Hedging Tree Surveys</p> <p><b>Yew Tree</b></p> <p>Antony Wood RFS Cert Arb <b>015395 63527 07813 897631</b> Yew Tree House, Hale, Milnthorpe</p>	<p><b>KP GARDENING SERVICES</b> ALL ASPECTS OF GARDEN MAINTENANCE UNDERTAKEN</p> <p>For a free quote contact Kevin Tel 07948 837189 KPGARDENINGSERVICES@YAHOO.CO.UK</p>		<p><b>WOODLANDS GARDEN CENTRE</b></p> <p>We specialise in all things floral</p> <p>Water Gardens our speciality</p> <p><b>Crooklands</b> <b>015395 - 67273</b></p>
<p><b>G.E.C. ELECTRICAL</b> niceic approved Agricultural / Domestic / Industrial / Commercial installations Power / lighting / alarms / rewires etc Free estimates. Inspection, testing &amp; certification undertaken. <b>07789051523</b></p>		<p><b>IAN COPELAND</b> Qualified Electrician For all your electrical installation work. FREE ESTIMATES NO VAT Tel 015395 64644 Mobile 07798 552028</p>	<p><b>TONY GIBSON</b> SPECIALIST IN: - STONEMASONRY - - PLASTERING - - ALL ASPECTS OF BUILDING - <b>015395 64702</b> <b>07815 888 564</b></p> <p>www.tgibsonbuilderscumbria.co.uk</p>
<p><b>IAN BRADSHAW</b> INTERIOR &amp; EXTERIOR PAINTER &amp; DECORATOR <b>015395 62089</b> <b>07968 390396</b></p>	<p>Gas &amp; Oil Boiler, Gas Fire Repairs &amp; Maintenance <b>015395 - 63562</b></p> <p><b>MARK N. SHAW</b></p>	<p><b>ANDREW COWPERTHWAIT</b> PAINTER DECORATOR PLUMBER &amp; TILER <b>01524 - 762443</b></p>	
<p><b>NEIL TAYLOR</b> PAINTER &amp; DECORATOR <b>015395 - 64411</b> <b>07778 - 467521</b></p>	<p><b>DIGITAL TV AERIAL AND SATELLITE FROM NBC-SKYNET</b></p> <p><b>07710 400 499 OR 015395 62561</b> LOCAL - PROFESSIONAL - RELIABLE</p>		<p>Boiler Services <b>GAS OIL LPG</b> <b>015395 - 63017</b></p> <p><b>LES CHAPLOW</b></p>
<p><b>Irene Taylor</b> Hearing Centres Salt Pie Lane Kirkby Lonsdale <b>015242 73589</b></p> <p>Specialist in hearing aids &amp; hearing protection www.prestonhearingcentre.co.uk Est. 1980</p>	<p><b>L. M. Baverstock</b> Ophthalmic Opticians The Square, Milnthorpe <b>015395 - 62633</b></p>	<p><b>Lakeland &amp; Lunesdale</b> Physiotherapy &amp; Sports Injury Clinic Milnthorpe <b>015395 64727</b></p> <p>clinic@physio-sportsinjuries.co.uk www.physio-sportsinjuries.co.uk</p>	<p><b>Root of Nature</b> Experienced Freelance Hairdressing Insured and qualified using quality products</p> <p>My <i>root</i> aim, <i>natural</i> looking hair that suits and by <i>nature</i> is in good condition, all in the comfort of your home or mine. Small range of beauty treatments also available. I offer a unique Cinderella pre-visitor package, taking stress &amp; exhaustion out of the occasion</p> <p>For information or an appointment call Gia on 015395 64182 or 07766 838184</p>
<p><b>C.E.S.</b> Electrical Services Installation ~ Inspection ~ Testing 015395 63303 / 07903 161602 Friendly reliable service</p>	<p><b>CHAMPION</b> CARPET &amp; UPHOLSTERY CLEANING Carpets, upholstery &amp; rugs cleaned &amp; revived to a high standard For homes, businesses, caravans/cars or holiday accommodation Great prices and free estimates call 015395 62390 or 07977 021002 www.championcarpetcleaning.co.uk</p>		<p>To book space call John on <b>015395 62648</b> or email gatewayads@btinternet.com</p>

**THE PARISH OF ST. MICHAEL AND ALL ANGELS, BEETHAM**

Priest-in Charge Local Lay Minister Church Wardens	Rev Linda Lonsdale Chris Roberts Anne Lofthouse John Lomax Jenny Marks Brian Smalley Graham Smith Val Holden Dianne Lomax Jenny Marks John Dugdale Wendy Nicholas Jenny Marks John Lomax	62412 63019 01524 923369 62648 62559 64778 01524 782319 63639 62648 62559 01524 781570 62515 62559 62648	rev@jandll.plus.com sandyandchris@aol.com sandyandanne@hotmail.com j.d.lomax@btinternet.com jenny.marks@btinternet.com b.e.smalley@btinternet.com graham.hollowayne@gmail.com cli.val@zen.co.uk diannelomax@btinternet.com jenny.marks@btinternet.com johndugdale10@btinternet.com head@beetham.cumbria.sch.uk beethamnews@aol.com gatewayads@btinternet.com
--	---	---	---

**Church services at Beetham in July and August**

Date	Time	Service	Date	Time	Service
1st July	9.30am	Holy Communion	2nd August 9 <sup>th</sup> after Trinity	10am	Parish Eucharist
2nd July	2.45pm	Edward Bear Club	2nd August 9 <sup>th</sup> after Trinity	6.30pm	Evensong
3rd July	2.45pm	School Assembly	5th August	9.30am	Holy Communion
5th July 5 <sup>th</sup> after Trinity	10am	Parish Eucharist	9th August 10 <sup>th</sup> after Trinity	10am	Parish Eucharist
5th July 5 <sup>th</sup> after Trinity	6.30pm	Evensong	9th August 10 <sup>th</sup> after Trinity	6.30pm	Evensong
8th July	9.30am	Holy Communion	12th August	9.30am	Holy Communion
10th July	2.45pm	School Assembly	16th August 11 <sup>th</sup> after Trinity	10am	Parish Eucharist
12th July 6 <sup>th</sup> after Trinity	10am	Parish Eucharist	16th August 11 <sup>th</sup> after Trinity	6.30pm	Evensong
12th July 6 <sup>th</sup> after Trinity	6.30pm	Evensong	19th August	9.30am	Holy Communion
15th July	9.30am	Holy Communion	23rd August 12 <sup>th</sup> after Trinity	10am	Parish Eucharist
15th July	2pm	School Leavers Assembly	23rd August 12 <sup>th</sup> after Trinity	6.30pm	Evensong
19th July 7 <sup>th</sup> after Trinity	10am	Parish Eucharist	26th August	9.30am	Holy Communion
19th July 7 <sup>th</sup> after Trinity	6.30pm	Evensong	30th August	10am	Parish Eucharist
22nd July	9.30am	Holy Communion	30th August	6.30pm	Evensong
26th July 8 <sup>th</sup> after Trinity	10am	Parish Eucharist	Please check the Church noticeboards or beethamstmichaelandallangels.co.uk for any changes to services		
26th July 8 <sup>th</sup> after Trinity	6.30pm	Evensong			
29th July	9.30am	Holy Communion			



'The Friends of Beetham Church' is essentially the fund-raising arm of the Beetham Church Heritage Trust and organises a programme of events throughout the year.

Although the aim is to raise money for the Trust, we are keen to maintain and further develop the strong sense of community that exists in and around St Michael & All Angels. All our events aim to be inclusive and enjoyable – we hope we are successful in this, but come along and see for yourself!

In a typical year events organised by the Friends will include the Shrove Tuesday Supper, the Duck Race on the River Bela, the Flower Festival and Exhibition, the Harvest Supper, a Garden Party, and at least one Concert. Members are also invited to the annual Friends Sunday celebration and lunch.

Membership is either by Annual subscription of £10, a one-off payment of £100 for Life membership, or £150 for joint Life members. If you would like to join in the fun whilst playing a part in maintaining our beautiful church for future generations please complete and return the membership form (available from church or the website). If you are a taxpayer please also consider completing the Gift Aid declaration

For further information please come along to the Friends Stall at Beetham Sports



## Congratulations to Beetham C of E Primary School!



Beetham C of E Primary School is one of only six Cumbrian primary schools to receive this year's Diocesan Award from the Bishop of Carlisle in recognition of ongoing work in the development of Christian clubs in schools to help create closer working ties with churches

Pupils and club leaders from the winning schools have been invited for afternoon tea with Bishop James and staff from the Diocesan Board of Education at the Bishop Bulley Barn, Rydal Hall on Tuesday 30 June. Children representing Beetham School will give a short presentation to the adults about their Easter Eggsplorer and Edward Bear Clubs run jointly with Beetham Church. A massive well done!

## Bygone Beetham ~ Beetham School

The first known school in Beetham seems to have been on the site of Pear Tree Cottage, dating back to around 1663. William Hutton refers to it in the Beetham Repository, and it is also mentioned in Nicolson & Burn's Antiquities of Westmorland. This school was demolished and rebuilt in the same location in 1820, but only twenty years later a new grammar school was opened on Stanley Street where the Heron Theatre is now located

This school was financed by John Yeats Thexton, son of the Reverend Joseph Thexton, and he recorded the following as an addition to Hutton's original Repository:-

*"in July 1841 the old school in the village of Beetham was taken down and a new school was built by John Yeats Thexton esq., at his own expense, near the Turnpike Gate House, and open on the 12th day of September following, 1841"*



The Elementary Education Act of 1870 highlighted the need for a larger building and the grammar school was extended. However, by the turn of the century it was again realised that the building was not fit for purpose and a new site was identified where the toll house stood on the opposite side of Stanley Street.

The grammar school was sold by Jennet Frith-Hudson, daughter of the original benefactor John Yeats Thexton, and the proceeds donated to the new school. The land was donated by Maurice Bromley Wilson of Dallam Tower on 12th January 1904. The old toll house was demolished, on the understanding that the new building retained some of the original character, and the old Toll House façade can still be seen today. The new school was dedicated in memory of Queen Victoria, and opened as a Church of England school on 11 September 1905

## From the Visitors Book in June

During June we again had a number of overseas visitors - including Australia, New Zealand, and Canada - as well as people coming back to the church after many years. These are just a small selection of this month's comments in our Visitors Book:

*"Feels very special with the Angels & Carvings of faces—a sense of Ancestry"*

*"Beautiful serene atmosphere"*

*"It was moving to sit again in the pew I sat in as a child and may it long remain for us all"*

## Pop in for Coffee & Cake

**Wednesday 1st July**  
10.15 to 11.30am

Join us in church for  
**Beetham Village**  
**Coffee Morning**



**There is no charge and all are welcome**

St Michael & All Angels Beetham  
**Edward Bear Club**

*Edward Bear says...*  
**I cannot wait to meet you all again at our next club!**

**2.45pm Thursday 2nd July**  
A short service and activities (30 mins) in church with juice & snacks, for young families and the young at heart!

## Strawberry Garden Party



We had been assured that special arrangements had been made for the weather to remain fine for the Parsonage Garden Party this year, and that is exactly what happened despite forecasts of rain!

We would like to thank Revd Linda and Geoffrey for so generously opening up their home and beautiful garden for a Strawberry themed Garden Party on Saturday 13th June. Over 40 people attended and enjoyed a delicious array of strawberry cakes and scones of every description



Background entertainment was provided by the Beetham Church Handbell Ringers, with a selection of songs ranging from Country Gardens to Sunny Afternoon. Three unsuspecting members of the audience then 'volunteered' to have a go at ringing, and Caroline, Gail and Grace all passed with flying colours



With many thanks to everyone that helped to make the event such a success ~ cake bakers, tea makers, tray carriers, washers up, scene shifters, raffle & plant stall organisers, entertainers, & contributors. Over £300 was raised for the Beetham Church Heritage Trust and a lovely afternoon was enjoyed by all  
The Friends of Beetham Church



## Beetham Church Choir

Thank you to everyone that supported Music Sunday on 21 June. The donations each year are used to buy music for the choir and organ, and for new robes when required

Beetham Church Choir makes an important contribution to our traditional choral worship. Members are all volunteers, and many are also associated with regionally renowned choirs such as Levens, Eversley, Allegri, Cumbria Choral Initiative, and the Mary Wakefield Festival Chorus. Please support our choir members in their performances during the year

If you are interested in joining the Church Choir please contact Margaret Cutress on 015395 62858

Mary Wakefield Festival Choral Weekend 2015

Saturday July 11th  
'Come and Sing' 10am-5pm  
St. Thomas' Church, Kendal

The Herdwyck Consort  
St. Anne's Church, Ings, 7.30pm

Sunday July 12th, 7.30pm  
Kendal Parish Church

**DVOŘÁK**  
**STABAT MATER**

CONDUCTOR  
**Ian Jones**

Tickets £14 (includes programme)  
Students FREE

from 'Made in Cumbria' Branthwaite Brow, Kendal; at the door, or from 01539 733944

SOLOISTS  
Laurie Ashworth  
Joyce Tindsley  
Robert Thompson  
Jolyon Dodgson

The Festival Chorus  
Northern Chamber Orchestra

www.mwff.org.uk

Levens Choir  
Conductor IAN JONES

MUSIC OF LOVE

**DIDO & AENEAS**  
PURCELL

Soprano EMILY ROBINSON  
Piano ALEXA WIGHTMAN  
String Quintet led by PAM REDMAN

*Betrayal*  
&  
THE BALLAD OF LITTLE MUSGRAVE AND LADY BARNARD  
BRITTEN

Sunday June 28th  
7.30pm  
Kendal Town Hall  
Tickets £10  
Children & students FREE

Available in advance from Kendal Brewery Arts Centre  
www.breweryarts.co.uk 01539 725133 or at the door. Doors open at 7pm.

Brewery Arts Centre

## Next editions of The Gateway

The Gateway welcomes any items of interest to our readership. There will be limited space available in a smaller **Beetham Sports Special Edition** for August (please submit by **29 July**), and the usual full edition for September

The deadline for the September edition is **Wednesday 26th August 2015**

Please send contributions to the editor:-  
Jenny Marks  
Email: beethamnews@aol.com  
Tel: 015395 62559

You can view current & past editions at [beethamstmichaelandallangels.co.uk/?Links](http://beethamstmichaelandallangels.co.uk/?Links)



## Anniversary Celebrations

The 800th anniversary of Magna Carta was marked by church bells being rung across the UK, including Beetham, at 3pm on Sunday 14 June. After the signing on 19 June 1215, it was shown that not even

the king was above the Common Law of the land. Over the next 800 years, the idea of Magna Carta 'went viral' in recognition of the central key clauses concerning liberty and justice. These have stood the test of time and Magna Carta is one of the most valuable of our exports to the rest of the world

The 200th anniversary of the Battle of Waterloo on 18 June was marked with a special floral display in the church. Waterloo brought an end to over 20 years of the Napoleonic Wars across the world, shaping the Europe that we know today and paving the way for the establishment of the United Nations





# School Corner

We are now rapidly approaching the end of term and school is really busy with all the children taking part in a wide range of activities. Our oldest children are preparing to go to secondary school and have been going on day visits to their new schools, as well as having staff visiting our school to meet the children and give 'taster' lessons. This is a really important part of the transition programme and helps to prepare our children for that all important move to secondary education.



As well as academic education we also work very hard at Beetham to teach our children life skills and help them to be independent and well organised. As part of this programme our Yr 3 & 4 children have just been on a residential visit to Arnside Youth Hostel. This is a super venue for them to experience their first night away from home with school and as you can see from the photographs they had a great time. They enjoyed cooking using Trangias, walking on Arnside Knott and of course sleeping in the Youth Hostel. They then caught the train to Silverdale and spent their second day with the rest of the school at Leighton Moss RSPB centre.



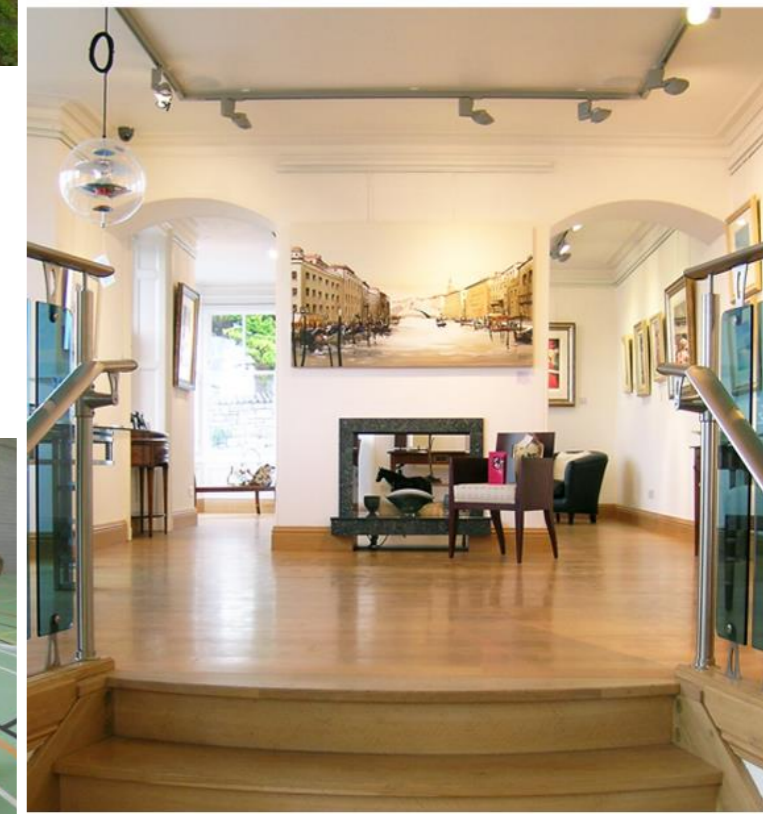
At Leighton Moss we worked in two groups: KS1 focused on animals and their habitats and KS2 looked at identifying plants, minibeasts and soil sampling. The centre is really well organised for school groups. There is an excellently resourced education room and very well trained staff who lead the activities for the children, making them informative and fun. KS2 collected soil samples from different areas of the reserve and analysed them to decide what type of soil they were. They collected minibeasts and again identified them, and also had time in the bird hide where they were lucky enough to see the Marsh Harriers.

This month we have used our PE grant to provide archery lessons for children in KS2. These were delivered by 'Northern Archery' in the Sports Hall at Dallam School. This was a great opportunity for the children to learn about the different kinds of bows that are available today and the correct posture for shooting. The sessions were very well organised and all the children improved their skills during the lessons and were able to hit the target most of the time!!



At the end of term we will be holding our Yr 6 Leaver's Service in the church on Wednesday 15<sup>th</sup> July at 2pm. This is a very special time when we are able to say Goodbye to the children who have been at Beetham for the last 7 years and wish them well in the next stage of their education. We would like to invite members of the church and village community to join us for this service in church.

At the end of our school year we would all like to say a big 'thank you' to everyone who has supported our school during this academic year and wish you all a lovely summer.



Best wishes  
Wendy Nicholas, staff and pupils  
at Beetham CE School



**Fine Art Jewellery Ceramics Lighting**  
**Glassware Silverware Sculpture**

**The Old Bank**  
Arnside  
01524 761762

**Opening Hours**  
10 - 4 Saturday  
11 - 4 Sunday  
10 - 5 Weekdays  
Closed Thursdays

art@gallery-h.co.uk  
www.gallery-h.co.uk





**Beetham Sports**  
25th July 2015

## The Great Family Day Out...

- Adult & Childrens Races with cash prizes**
- Cumberland & Westmorland Wrestling**
- Childrens Fancy Dress**
- The Famous Fell Race**
- Donkey Rides**
- Mega Raffle**
- First Class Home Made Refreshments**
- Plenty of Side Stalls**
- Lots of Other Attractions**
- On-field parking**

*Traditional Family Fun!*

**Adults £2.50**

**Children 50p**

**The Sports open on Beetham Sports Field at 1.00pm followed by the Fancy Dress at 1.15pm**



**Bake Sale**  
Friday July 17th 2015

On Friday July 17th we're holding a special Bake Sale to help raise funds for victims of torture. BAKE FOR FREEDOM is an initiative of FREEDOM FROM TORTURE, and following a mill tour and milling demonstration we will be turning out our freshly baked bread for sale! All our artisan breads must go!

Mill Tour and Milling Demonstration starts at 11.30

Bake Sale starts 12.30

01539 564271 / [www.heronmill.org](http://www.heronmill.org) / [info@heronmill.org](mailto:info@heronmill.org)  
Heron Corn Mill, Mill Lane, Beetham, Milnthorpe, Cumbria, LA7 7PQ

All proceeds go to Freedom from Torture



The Manna House  
**Big Garden Party**  
Activities: Quiz, Raffle, Face Painting, Petting Zoo, Stalls, Tug Of War, Free Entry

**Abbot Hall Park**  
Saturday 4th July  
10.30am-3pm

**the WI** Beetham WI  
INSPIRING WOMEN  
Thursday 2nd July

Amanda White's  
"Evening of Dance"  
At 7-30 in Her Garden  
Weather Permitting

Please Join us for an Evening of Fun  
Followed by Pimms and Nibbles  
At Inglewood, Hale



Amanda 62046



**SUMMER FILMS**

art dance theatre music film  
the HERON

Friday 10<sup>th</sup> July 7.30pm  
**BOYHOOD** (2014) [15] 2 hours 45 mins

A superb, ground-breaking, movie filmed over 12 years with the same cast. The story of a boy who literally grows up before our eyes in a divided and mildly dysfunctional family. It charts the rocky terrain of childhood like no other film before in a nostalgic time capsule of the recent past and an ode to growing up.

Friday 7<sup>th</sup> August 7.30pm  
**MR TURNER** (2014) [12A] 2 hours 30 mins

This impressive film explores the last years of the great eccentric English painter J.M.W. Turner. We see him travelling, painting, staying with country aristocracy, delivering rambling lectures at the RA, wooing his landlady, visiting brothels (for inspiration!) and mocking his fellow painter John Constable.

Friday 4<sup>th</sup> September 7.30pm  
**The THEORY of EVERYTHING** (2014) [12a] 2 hours 3 mins

The extraordinary story of the renowned astrophysicist, Stephen Hawking, and his devoted and long suffering wife Jane, based on her memoir of her life with Stephen from their meeting at Cambridge to their eventual divorce many years later. Eddie Redmayne's portrayal of Stephen won 2014 Best Actor Oscar. Select your seats and book on line at [www.theherontheatre.com](http://www.theherontheatre.com) or Pay on the door - all seats £5

## Party in the Pasture 2015

The family festival in a field near ewe  
**Hincaster**  
Saturday 18th July  
in aid of South Lakes Carers  
This years theme ~ Pirates



from 5pm: treasure hunt, crafts, dog show, rounders, cow tombola and much more

**7.30pm Pie & Pea Supper**  
Live Moosic until midnight  
Headliners: Rusty Bullets

Bring your own drinks & seating  
Wild campers welcome

Evening tickets (advance sales only)  
Adults £11 / u14's £5 / under 5's free  
Ticket hotline 015395 61243

## SOUTH LAKELAND AGE UK

**BEETHAM COMMUNITY TRANSPORT** - There is now a dedicated contact number and any residents of Beetham, Slackhead and Hale requiring transport to hospital appointments, doctor, dentist, optician, care home visits etc should call **0747 014 2221**. Local drivers are always needed for occasional door to door transport so please contact Margaret Parker on 07741 261 474 if you are able to help.

**LUNCH CLUBS** - Meet noon for 12.30pm lunch

**Arnside** Lunch Club 1st Friday of each month at **The Albion, Arnside**. Janet Bolton 01524 762559  
**Storth** Lunch Club 2nd Thursday of each month at **The Kingfisher, Sandside**. Norah Padgett 015395 62887  
**Sandside** Lunch Club 3rd Wednesday of each month at **The Ship, Sandside**. Janet Bolton 01524 762559

**GENTLE EXERCISE CLASSES & REFRESHMENTS**

Wednesday 10.30am **Storth Village Hall**. Mike Crawford: 015395 60736  
Friday 10am **Arnside Methodist Church Hall**. Eileen Walters: 01524 761720

**Age UK South Lakeland, 01539 728180, [www.ageuk.org.uk/southlakeland](http://www.ageuk.org.uk/southlakeland)**  
Village Agent for Arnside, Carr Bank, Sandside, Storth, Beetham and Farleton [mparker@ageuksouthlakeland.org.uk](mailto:mparker@ageuksouthlakeland.org.uk)



## Storth & District Gardening Association

**Annual Show**

of Flowers, Vegetables, Fruit, & Handicrafts

**Village Hall, Storth**  
Sunday 16th August

Doors open at 2pm  
Adults £1, Members & Children Free  
Refreshments available



## 'Life & Times of a Gardener'

An evening of entertaining anecdotes with **Christine Walkden**  
TV & Radio Gardening Personality



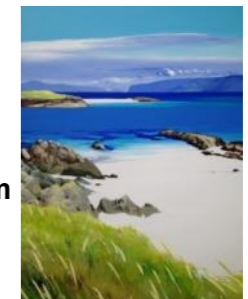
**Gaskell Hall Silverdale**  
Wednesday 26th August at 7pm

£15 per ticket including glass of wine  
in aid of 'Friends of Chernobyl's Children'  
Bar ~ Plant Stall ~ Raffle  
Ticket entry only—contact June on  
015395 63412 or 07967 399773

## Milnthorpe Art Exhibition

The Largest Open Art Exhibition  
in the North West - now in its 26<sup>th</sup> Year!

**St Thomas' Church, Milnthorpe**  
23rd-26th July



Thursday,  
Friday,  
Saturday  
10am to 7pm

Sunday  
10am to 3pm

**FREE ENTRY**

All exhibits are for sale ~ 400 items on display  
Catalogues, Raffle Tickets and Refreshments

All profits will go to the following local good causes:-  
Jigsaw (Cumbria's only Children's Hospice)  
St Thomas' Church Restoration Fund

Exhibition Secretary: George Stannard  
015395 63082

[george.stannard149@btinternet.com](mailto:george.stannard149@btinternet.com)  
[www.milnthorpe-artexhibition.co.uk](http://www.milnthorpe-artexhibition.co.uk)



*the KEY—unlocking potential*

**Youth Workers – 2 x 18.5 hours per week each**

These are new posts to develop a new youth work initiative around the Kent Estuary with churches and other local agencies

**You will:** Be passionate about young people; have or be working towards a youth work qualification; have experience in the delivery and management of detached and in-house youth work  
**We can offer:** An annual salary of £10,872 for 18.5hrs per week, worked flexibly and to be negotiated; an optional pension scheme; holidays in line with statutory requirements

For further details and an application pack, please email: [kendal.circuit@gmail.com](mailto:kendal.circuit@gmail.com) or call Chris Palmer on 01539 739116

Closing date: **5.00pm on Wednesday 1 July 2015**  
Interviews: **Tuesday 14 July 2015**

The KEY Project is a joint initiative of Anglican, Methodist and Roman Catholic churches in the Kent Estuary  
*Appointments will be subject to satisfactory enhanced DBS checks*



The Church of England  
around the Kent Estuary

**Sunday Worship in the Kent Estuary area**

**ARNSIDE ST JAMES**

8.00am: BCP Holy Communion  
10.30am: Morning Worship, usually with Communion.  
2<sup>nd</sup> Sunday: All-age Worship  
6.30pm: 1<sup>st</sup> Sunday various styles of worship  
Info: [arnsidechurch.webplus.net](http://arnsidechurch.webplus.net) Revd David Cooper 01524 761319

**BEETHAM ST MICHAEL AND ALL ANGELS**

10.00am: Parish Communion  
6.30pm: Choral Evensong  
Info: [beethamstmichaelandallangels.co.uk](http://beethamstmichaelandallangels.co.uk)  
Revd Linda Lonsdale 015395 62412

**HEVERSHAM ST PETER**

8.00am: BCP Holy Communion  
2<sup>nd</sup>, 4<sup>th</sup> and 5<sup>th</sup> Sundays  
9.30am: Main Service:  
1<sup>st</sup> and 3<sup>rd</sup> Sundays: Parish Communion (CW)  
2<sup>nd</sup> Sunday: Communion Praise (contemporary worship)  
4<sup>th</sup> Sunday: All Age Worship  
4.00pm - 5.00pm: Messy Church for Families on 3<sup>rd</sup> Sunday  
6.30pm: Evening Prayer with hymns on the 4<sup>th</sup> Sunday  
Info: [stpetersheversham.org](http://stpetersheversham.org) Revd Susan Wilson 015395 63125

**LEVENS ST JOHN**

10.00am: Parish Communion: 2<sup>nd</sup> Sunday All-age worship  
Info: [levens.org.uk](http://levens.org.uk) Revd Ruth Crossley 015395 60223

**MILNTHORPE ST THOMAS**

8.00am: BCP Holy Communion 1<sup>st</sup> and 3<sup>rd</sup> Sundays  
11.00am: Main Services 1<sup>st</sup>, 2<sup>nd</sup> and 4<sup>th</sup>: CW Communion  
3<sup>rd</sup> Sunday: Morning Praise  
11.00am: every week Sunday Circle for children  
6.30pm: on the 2<sup>nd</sup> Sunday: Café Church  
Info: Revd Susan Wilson 015395 63125

**STORTH VILLAGE CHURCH**

10.30am: varied Anglican and Methodist services  
Info: Revd David Cooper 01524 761319 / Revd David Stretton 01524 761397

**METHODIST SERVICES**

**ARNSIDE**  
10.30am  
[arnsidemethodistchurch.org.uk](http://arnsidemethodistchurch.org.uk)  
**MILNTHORPE**  
10.30am 3<sup>rd</sup> Sunday of month  
in Community Room at Milnthorpe  
Firs Rd Children's Centre  
**LEVENS**  
10.30am [levens.org.uk](http://levens.org.uk)  
Info: Revd David Stretton  
01524 761397

**ROMAN CATHOLIC SERVICES**

**ARNSIDE**  
OUR LADY OF LOURDES  
Saturday, 5.30pm  
**MILNTHORPE**  
CHRIST THE KING  
Sunday, 9.30am  
Info: Mgr Flattery 015395 62387

**BEETHAM PARISH COUNCIL NEWSLETTER**  
ISSUE No 23, APRIL – JUNE 2015

The project for improving the Dixies site continues. The first priority is to ensure that the sea defences of the site are sound, before any money is spent on the visible surface. An enthusiastic local marine architect has joined the team considering options for development and an exciting outcome is expected. As always, financial constraints must be borne in mind.

The conclusion of the public inquiry into whether a number of paths through Burntbarrow Woods could be designated as public rights of way (ROW) was that, in principle, this new status could be confirmed given certain modifications to the original proposal. The similar inquiry for paths around Hale Marble Quarry is set to commence on 13<sup>th</sup> October 2015 at Storth Village Hall and, like the Burntbarrow Woods inquiry, is likely to attract much public interest.

The streetlamps issue has resurfaced with Electricity North-west, as expected, now starting to work through the list of lamps mounted on its poles. Two lamps in Back Lane, Hale, have now been removed and cannot be replaced for technical reasons, despite the Parish Council's willingness to do so. A lamp, in Storth Road, is also to be removed in the near future and cannot be replaced for the same reason. Fortunately, in this case, there is not the same need since another lamp is sited nearby. The Parish Council continues to accumulate funds for replacing those lamps which may be removed in the future and where technical difficulties do not apply, although not all lamps that currently exist may be considered necessary. Each situation will be dealt with on its merits.

The issue of Fishwick's proposal to build a crematorium at its Beetham Hall site remains unresolved. SLDC's refusal of the planning application has been appealed and an informal hearing is now due to take place at Kendal Town Hall on 11<sup>th</sup> August 2015. An application, by another party, to build a crematorium in an adjacent parish has also been refused. Most people accept the need for such a facility, but agreeing on a suitable site is proving much more controversial and difficult.

Some of the previously installed, and then removed, white lining in Beetham village has now been re-instated at the request of residents and is proving helpful in controlling traffic entering and leaving the village at its northern access point onto the A6. Attractive planters have now been placed at all entrances to the village, mainly from the A6, as a result of co-operation between the Parish Council and Beetham WI. The problem of (mainly foreign) drivers of large delivery vehicles searching for the Billerud paper factory, and wandering into the village by mistake, is being tackled.

As you may have read in the local newspaper, the pheasant population has this year grown to epidemic proportions; they may be beautiful to look at but they can cause a great deal of damage in gardens. There seems to be no easy solution to this problem.

As a result of the parish elections in May, most members of the Parish Council were re-elected but there remains one vacancy which, by law, must be filled in order to bring the total number of members to nine. Notices of this vacancy have been placed in all parish notice boards – so far without response. You are urged to give thought to this and consider submitting your application for this very worthwhile job. It takes up very little time (11 evenings a year) and provides the opportunity to have a say in the important decisions that constantly have to be made on an interesting variety of matters to do with the local environment and the welfare of parish residents.

Clerk: Mr J R Scargill, 01524-782811, [jscargill@btinternet.com](mailto:jscargill@btinternet.com)

Contact details of the current Beetham East & West Ward councillors can be found online at [www.beethampc.co.uk](http://www.beethampc.co.uk)

**The next Parish Council meeting is at  
7pm on Monday 6th July  
in Storth School**

*Members of the public are welcome to attend*

**HOUGHTONS**

**HOME IMPROVEMENT CENTRE**

Park Road, Milnthorpe  
T: 015395 63904

Open 7 days  
Trade & Retail

Large stock areas covering  
Commercial & DIY Power Tools  
Hardware  
Electrical & Household Goods  
Gardening Tools & Equipment  
Sheds, Seeds & Soil  
Fencing & Paving  
Timber, Plumbing, Glass, Key Cutting  
Paints, Wallpapers & Decorating sundries  
Paint Mixing Service  
Gifts & Cards for all occasions

**WESTMORLAND COURT**  
ARNSIDE

NURSING & RESIDENTIAL CARE HOME  
46 roomed home set in its own quiet grounds.  
Providing a high standard of care  
within the community

Please ring Jackie or Ann  
for information or a friendly chat,  
on 01524 - 761291

Come & join us...  
Come and join our band of volunteers.  
Make a real difference for local people.  
Enjoy working as part of a friendly team.  
Full support and training given.

Pop into our Milnthorpe shop or call  
Chris on 01539 728118

**LUNESDALE HOUSE**

RESIDENTIAL  
RETIREMENT HOME

Hale, Milnthorpe  
015395 - 63293

Registered with  
The National Care Standards  
Commission

Huw & Lorraine welcome you to  
Beetham Village Store & Tea Room  
Tel: 015395 62389



Shop open  
Monday 8.30-6pm  
Thursday 8.30-6pm  
Friday 8.30-5pm  
Saturday 9-5pm  
Sunday 10-4pm

Tea Room open  
Thursday to  
Monday 10-4pm

**HALE GARAGE CO**

(Practical Automobile Engineers)  
Established over 70 years

Main A6 Road, Hale

New & Used Car Sales Service & Repairs

Full Dealer Computerised Diagnostics Equipment  
MOT Testing, Body Repairs, Tyres

Batteries, Exhausts & all your Motoring needs

Free collection or loan car service

015395 - 62173 / 62839

**MOSSDALE SERVICE STATION**

A6, Hale Moss, tel: 01524 781381  
Petrol, Car Wash



Store open 6am-8pm  
Wines & Beers, Fresh Produce, Groceries, Snacks  
Hot & Cold Drinks, Papers, National Lottery



**CHIMNEY SWEEP**

Bill Haddow

2 THE MAINS  
BEETHAM  
LA7 7AS

015395 63768  
0794 9955 472

Member of the Institute of Chimney Sweeps



**SUPPORT OUR  
LOCAL ADVERTISERS**

To book space  
call John on  
015395 62648  
or  
email  
[gatewayads@btinternet.com](mailto:gatewayads@btinternet.com)

**FRIENDS OF  
BEETHAM CHURCH**

Beetham Church Heritage  
Trust is registered with the  
donation website at

[easyfundraising.org.uk/bcht](http://easyfundraising.org.uk/bcht)

Help support the Trust by  
using this website for your  
on-line shopping  
– it will cost you nothing

Please pick up a leaflet  
in church

**STORTH MOTHER & TODDLER GROUP**  
Heron Hall, Storth

Tuesdays/Thursdays, 10am - 12noon

All welcome

Enquiries to Tina on 015395 - 62281

**FISHWICKS LIMITED**

Established 1935

**Fishwicks  
Funeral Service**

Beetham Hall, Beetham,  
Milnthorpe, Cumbria LA7 7BQ

Tel: 015395 63108

Kirkby Lonsdale: 015242 71400

Independent Family Business  
24 Hour Service  
Private Chapels of Rest  
Pre-paid Funeral Plans

[www.fishwicksltd.co.uk](http://www.fishwicksltd.co.uk)

**PARKIN and JACKSON  
Monumental Masons**

New Memorials  
Second Inscriptions, Repaints,  
Regilds and Renovations

Visit the showroom on  
14 APPLEBY ROAD, KENDAL LA9 6ES  
Telephone: 01539 722838  
Free estimates & brochure on request  
[www.parkinandjackson.co.uk](http://www.parkinandjackson.co.uk)  
email: [info@parkinandjackson.co.uk](mailto:info@parkinandjackson.co.uk)

**EDWARD DUCKETT & SON**

**FUNERAL DIRECTORS**

Greenside, Holme, Camforth, Lancs LA6 1PS

Tel: 01524 781232

Fax: 01524 782853

**PRIVATE CHAPEL OF REST**

**GOLDEN  
CHARTER  
FUNERAL PLANS**  
Established 1946