

A Rocha 'Bronze Eco Church Award'

St Michael & All Angels has successfully achieved the Bronze Level of the A Rocha Eco Church Scheme*

The Award scheme was launched in 2016 to encourage churches of all denominations to care for creation. It offers a practical framework for churches to work towards a Net Zero target and increase awareness of their impact on the environment. 6,300 churches have registered for the scheme, of which over 2,500 have now achieved a bronze, silver or gold award

The programme covers five key areas:-

◆ **Worship and teaching**

Celebrating God's creation in our church services and communicating environmental issues through our magazines and media

◆ **Buildings**

Understanding our carbon footprint and developing a plan to work towards Net Zero through practical energy efficiency improvements

◆ **Land**

Encouraging native wildlife and managing land to maximise conservation

◆ **Community and global engagement**

Supporting initiatives such as Toilet Twinning, using ethically sourced goods, and encouraging members in local conservation work

◆ **Lifestyle**

Encouraging recycling and reuse, eco-friendly products, ethical investments, and reducing energy consumption

Completing the comprehensive scheme survey was the first step in understanding how we can all help the environment. Many of the actions are simple to implement at both a church and a personal level and everyone is encouraged to look at their own lifestyle and see what small changes they can make - recycling, car sharing, energy-efficient light bulbs, encouraging wildlife to name but a few. Please take a few moments after reading this to think of one thing that you can commit to changing to help our environment

* A Rocha UK is a Christian charity working to protect and restore the natural world and committed to equipping Christians and churches in the UK to care for the environment. The charity is a member of Churches Together in England (CTE) and accepts the CTE's Statement of Belief.



Brain of Beetham Quiz

Our Quizmaster Clive Holden is currently having a well earned rest recovering from surgery. We all wish him a speedy recovery and we look forward to his next challenging quiz!



THE GATEWAY

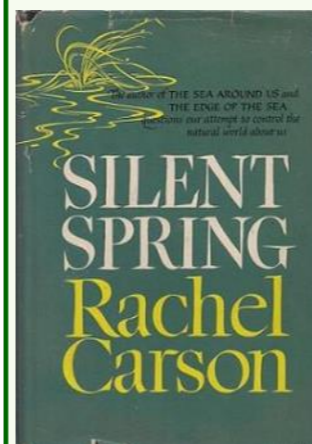


PARISH MAGAZINE OF
ST MICHAEL & ALL ANGELS, BEETHAM

OCTOBER 2024

www.beethamstmichaelandallangels.co.uk

*"The sedge is wither'd from the lake,
And no birds sing."*



These lines from John Keats' poem 'La Belle Dame Sans Merci' were the inspiration for the title of the influential book 'Silent Spring' by Rachel Carson, published in 1962. The book questioned the impact of pesticides on the balance of nature and challenged whether the governments of the day were answerable for environmental damage. It was compelling reading that led to the withdrawal of DDT pesticides and went on to inspire both the formation of the modern environmental movement in the 1970s and change government accountability for ecological issues

"The earth's vegetation is part of a web of life in which there are intimate and essential relations between plants and the earth, between plants and other plants, between plants and animals. Sometimes we have no choice but to disturb these relationships, but we should do so thoughtfully, with full awareness that what we do may have consequences remote in time and place." Rachel Carson, Silent Spring



Fast forward more than 60 years and here in Cumbria we are listening to the news headlines of unwelcome sewage release in Windermere. Did you know that October is designated as 'Unblocktober'? Now in its sixth year, the campaign aims to improve our lakes, rivers and seas by unblocking our drains and sewers, and reducing overflow discharge. Plastics and fats are the biggest culprits and the target is to commit to stop pouring the wrong things down our drains or flushing them down our toilets for the full month of October - anything from nappies and disposable facemasks to cooking oil and dental floss

Campaigns like these are gaining momentum, many driven by our younger generations as eco change will impact them the most. The actions are usually a straightforward ask, whether it is the Big Garden Bird Watch, the Great British Spring Clean, or changing small habits of a lifetime to become more eco friendly

We are very lucky – and perhaps more than a little spoilt – to live in such a beautiful part of the world, but the Windermere story reminds us that we are not immune to the problems. How many times have you commented that particular bird species or certain wild flowers are no longer common around here? How often are we affected by flooded roads? Instead of thinking that one person cannot make a difference and ignoring the campaigns, maybe we should challenge each other to give one a try

St Michael & All Angels decided to put this to the test by embarking on the A Rocha 'Eco Church' project this year. You can find the details of this project on the back page of this edition of The Gateway, but we are delighted to announce that we have been awarded the **Bronze level 'in recognition of our efforts to care for God's Earth'**. We have a long way to go to reach the Silver and Gold Awards, but at least we have made a start – and it was not painful!

We know that climate change is happening. We need to understand that we can each make a difference. Try it this month.

"Those who contemplate the beauty of the earth find reserves of strength that will endure as long as life lasts. There is something infinitely healing in the repeated refrains of nature -- the assurance that dawn comes after night, and spring after winter." Rachel Carson, Silent Spring

Jenny Marks

Letter from The Revd Andrew Norman



Dear friends,

The advent of astronomical and meteorological autumn brings with it a sense of change and transition, in our weather and climate, in our wardrobe choices, perhaps in our television viewing (not least with the return of Strictly Come Dancing), but also in the shape and focus of the church's year. Our acknowledgement of the alternating seasons – in all their variety and dependability – encouraging us to look the God from whom good things come, the author and cause of all that we see, receive and experience.

For the Church, as it has done for centuries, this understanding that we live in a changing world, in changing times, with the reality of life's unpredictability and anxieties, is first and foremost an invitation into thanksgiving and gratitude. To a recognition of God's power and authority and our need to perceive and know the good things that surround us as signs of his grace and blessing. As the well-known hymn, sung with great gusto at this time of year, puts it:

*'All good gifts around us are sent from heaven above,
then thank the Lord, O thank the Lord, for all his love.'*

This, of course, is what lies at the heart of our Harvest celebrations: offering us the visible and tangible reminder of our reliance on God, and upon each other, for the fulfilment of our daily needs and the provision of our daily bread. In doing so we remember at Harvest that, however hard we might try and despite our often-mistaken assumptions, we cannot simply live for ourselves alone, looking after our own interests of concerned simply with our own well-being; rather our lives are fundamentally and intrinsically bound up with each other. We rely on the effort, hard-work and attentiveness of farmers, and all who work on land and sea, those who transport our food and whose work is to ensure that shelves are filled, and the harvests of the earth are readily made available both in our own country and around the world.

Moreover, it is only what we take time to notice the interconnectedness of our lives that our minds and hearts can be moved in love, charity and compassion towards those it is so easy often to forget. To the many lives, close to home and across the earth, who live in poverty and distress, who endure famine, hunger, homelessness and deprivation, whose cries of pain and heartache are so often drowned out by the world's greed and systems of injustice. At Harvest-time we take time to be reminded that the experiences of so many fall-short of what God intends for his children, and as a result are provoked into a response; most notably through our desire to give generously, charitably and lovingly to those organisations and groups which seek to offer hope and strength to those in need.

However, though we're acutely aware of this at Harvest such an attitude and attentiveness to the needs, concerns and cares of others needs to be a habit to which we constantly return; that help provide a frame and focus for how we seek to live alongside one another. We can do this, I'd suggest, in two ways.

Firstly, in taking time to notice what's going around us, in our news headlines and amongst our neighbours and community, and by living life differently in response: thinking about what we can do, through our words, prayers or resources to make a tangible impact in the lives of those who need help, support, strength and reassurance. And then secondly (and perhaps more importantly) through an increased openness and willingness in seeking out the things of God, in what he has to show us and teach us about how we should live alongside one another. Allowing our plans and priorities to be guided and shaped by the one who tells us time-and-time again to look to the interests of our neighbours, conscious that in every person we see his image and likeness.

I close with some words of the eighteenth-century Scottish writer Robert Burns, which seem eminently appropriate for us as we look to Harvest. They show us how faith in God, as the Bible teaches often, gives us wisdom and vision to perceive and know the dignity, worth and value of every human person. And what such insight means for those who seek to follow in the way of the Lord today with humility, love and thankfulness.

*'O wad some Pow'r the giftie gie us,
To see oursels as ithers see us!'*

With every good wish and prayer for God's blessing,

St Michael & All Angels Beetham Church Services for October

Date	Time	Service
Wed 2nd	10.30am	BCP Communion
Sun 6th	11am	Harvest Eucharist
	6pm	Songs and Praise
Sun 13th	11am	Parish Eucharist
	6pm	BCP* Evensong
Sun 20th	11am	Parish Eucharist
	6pm	BCP Evensong
Sun 27th	11am	Parish Eucharist
	6pm	BCP Evensong

Please see weekly Pewsheet for details
*Book of Common Prayer

Grief is hard. Death can impact all of life.

The Bereavement Journey

7 sessions of films and discussion for anyone bereaved anytime

Topics include:

- Attachment, separation and loss
- The pain and responses of grief
- Anger and guilt
- Coping with others' reactions
- Delayed and suppressed grief
- Adjusting to change
- Moving forward healthily
- Faith questions – a Christian perspective (optional last session)

Running soon: Storth Village Church
Thursdays 1.30-3.30pm
10, 17, 24 Oct
7, 14, 21, 28 Nov
Booking is necessary.
For more info &/or to book: revhannahwallace@gmail.com 01524 449035

To find out more visit: thebereavementjourney.org

REST & RESET

Christian meditation
A moment to press pause II

St James Church Arnside
6:15 - 7:00PM

MAY TUES 7th JUL TUES 2nd OCT TUES 1st DEC TUES 3rd

REST & RESTORE

A time of prayer for healing & wholeness

St James Church Arnside
6:15 - 7:00PM

JUN TUES 4th SEPT TUES 3rd NOV TUES 5th

Contact: revhannahwallace@gmail.com 01524 449 035

The marriage of Steven Hartley & Beth Ingham took place on Tuesday 10th September

We wish the happy couple Faith, Hope & Love in their future lives together

Baptism Sunday 22nd September Jenson Leonard Dobson

We welcome him into the Beetham Church family

A Fair Share

The Bishop of Carlisle's HARVEST APPEAL 2024

Once again we are supporting the work of The Bishop's Harvest Appeal this year, supporting the work of **Christian Aid** (in Burkina Faso) and the work of **The Church Mission Society** (in Northern Argentina).

CHURCH MISSION SOCIETY

christian aid

www.carlisle-diocese.org.uk/harvestappeal

Harvest Thanksgiving 2024

As well as our support for the Bishop's Harvest Appeal, we are also encouraging physical donations of food for the important and valued work of the **Milnthorpe Area Food Bank**.

Thank you very much for your help and generosity!

Organ Recital by Alan Gardner

3pm on Sunday 13th October

Arnside Methodist Church
Chapel Lane, LA5 0AQ

Suggest donation £10 includes refreshments

All proceeds toward the church's 150th celebrations

150th Anniversary 1875-2025

For more info contact Alan - 01524 761542

CONTACTS FOR THE PARISH OF ST. MICHAEL AND ALL ANGELS, BEETHAM

Priest-in-Charge	The Revd Andrew Norman	015395 62355	revdabn@gmail.com
Assistant Curate	The Revd Hannah Wallace	01524 449035	revhannahwallace@gmail.com
Lay Minister	Chris Roberts	015395 63019	lainyandchris@aol.com
Lay Minister/Churchwarden	Vivien Stirrup	015395 64320	vstirrup7@aol.com
Churchwarden	Theresa Holden	01524 782737	mtholden77@gmail.com
Churchwarden	Deborah Lancaster		lancasterdeborah82@gmail.com
PCC Treasurer	John Lomax	015395 62648	j.d.lomax@btinternet.com
Gateway Editor	Jenny Marks	015395 62559	jenny.marks@btinternet.com
Beetham CE School	Abi Johnson	015395 62515	head@beetham.cumbria.sch.uk

Please do be in touch with Andrew you would like to receive the parish email, if there is any support or encouragement he can offer, if you would have any questions about services church life or the Christian faith, or if you would like anyone or anything remembered in prayer. He would be very pleased to hear from you.



'THE TRUE BEAUTY OF MUSIC IS THAT IT CONNECTS PEOPLE, IT CARRIES A MESSAGE, AND WE, THE MUSICIANS, ARE THE MESSENGERS'
Roy Ayres

My goodness we are in October. This year is flying by and for some it cannot pass fast enough. The World it seems has lost its song. It may feel that it has been replaced by total discord. But if we listen really carefully there is a new tune forming and we can all contribute, should we wish to.

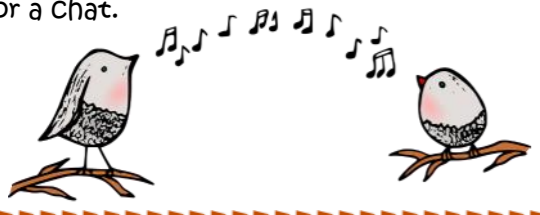
'MUSIC IS HEALING. MUSIC HOLDS THINGS TOGETHER'
Prince

There is a lot of listening involved in music, especially when playing it. It is a skill we have to develop as we learn. To listen to each other to acknowledge the subtleties other players have and let them be heard. For every instrument has something to say, if we listen. We learn from that.

'HEARTS THAT BEAT TO THE TUNE OF KINDNESS CAN CHANGE THE RHYTHM OF THE WORLD'
C J Peterson

Beetham Community Band is one of many ways one can find connection, support, friendship and camaraderie. Not to mention a great deal of fun and a lot of laughter. Everyone is welcome. No auditions, no experience. We have some lovely members who are learning as we go. It is how I started, it helps me to keep going because I know I feel so much better after playing music.

There is never a right time to join a band. One joins when it feels right. But I have to say, with ninety plus days to go before we hit Christmas, it is quite a nice time. Tunes are familiar, shorter and a good place to start your journey. Why not take some time out and come and meet us. Always welcome. Or give me a call for a chat.



'LOVE IS FRIENDSHIP SET TO MUSIC'
Jackson Pollock

Until November, much love and kindness,
Tess 07725580095

My love dwelt in a northern land
British part songs and motets

St. John's Church, Silverdale
3 p.m., Sunday 20th October 2024

Levens Choir

Conductor:
Gawain Glenton

Further information
www.levenschoir.net

CharityNo. 1010595

Tickets £15 Children and students free
Available from www.levenschoir.net or at the door

art dance music film

the HERON theatre

October What's On

Friday 4th Oct ~ 'Anatomy of a Fall' (Film)

Sunday 6th Oct ~ Trio Kagura (Sunday Music)

Friday 11th Oct ~ I'm Glad I Asked (Drama)

Tuesday 15th Oct ~ 'Prima Facie' (National Theatre Live)

Saturday 19th Oct ~ Will Finn & Rosie Calvert (Saturday Music)

Friday 25th Oct ~ How To Be Brave (Drama)

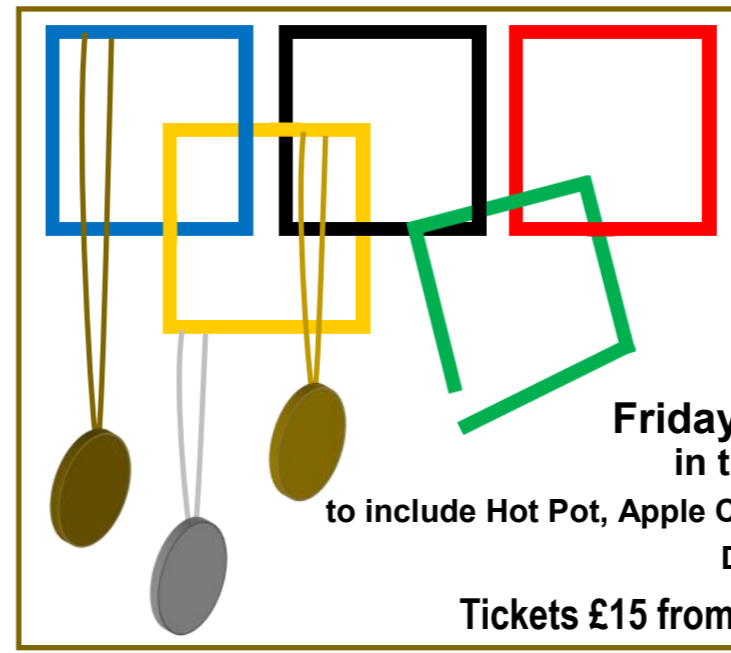
Friday 1st Nov ~ 'Poor Things' (Film)

Sunday 3rd Nov ~ Eden Baroque (Sunday Music)

Friday 8th Nov ~ Coward At Sea (Drama)

Book tickets online www.theherontheatre.com
email: boxoffice@theherontheatre.com ~ tel: 015395 64283
Evening performances start at 7.30pm; Sunday Music 2.30pm;
National Theatre Live 2pm
Doors open 45 minutes before performance. Refreshments available

The Heron Theatre, Stanley Street, Beetham, LA7 7AS



'For One Night Only!'
Team Great Beetham
presents the
Church Harvest Supper 2024

on
Friday 11th October at 7.30pm
in the Heron Corn Mill Barn

to include Hot Pot, Apple Crumble, Drinks, Raffle & plenty of Entertainment!

Doors open at 7pm

Tickets £15 from Dianne Lomax on 015395 62648

Church Heating

The more it snows (Tiddely pom)
The more it goes (Tiddely pom)
The more it goes (Tiddely pom)
On snowing.

Luckily - unlike Winnie-the-Pooh - we have escaped any snow so far this Autumn, which is perhaps a Very Good Thing. Our church is heated by twin gas boilers which are now obsolete and no longer operating at maximum efficiency. Spare parts are no longer available for the boilers and we are having to replace them - hopefully before they fail completely and leave us all with cold toes and the church susceptible to deterioration

And nobody knows (Tiddely pom)
How cold my toes (Tiddely pom)
How cold my toes (Tiddely pom)
Are growing.

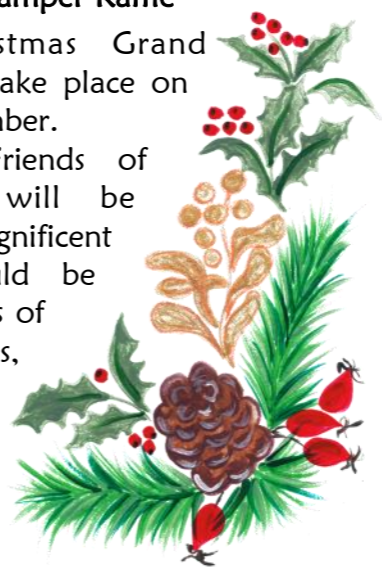
We had hoped to move to a more eco friendly heating system in our roadmap to a net zero carbon church. Unfortunately - following extensive consultation - the alternatives for solar, biomass, air or ground source pump technology all had to be ruled out. Our only option remaining is therefore to change out the existing boilers for new gas boilers which are more energy efficient, and hydrogen ready for when this greener supply is available. This does mean, however, that the existing Victorian underfloor pipework can be reused

A A Milne
The House at Pooh Corner

Of course this all comes at a significant cost, and sadly grants are not currently available for this type of work. Please continue to support us in all our fundraising to maintain the church at the heart of our community for future generations

Church Grand Hamper Raffle

The Annual Christmas Grand Hamper Raffle will take place on Saturday 30th November. Once again the Friends of Beetham Church will be creating plenty of magnificent hampers, and would be grateful for donations of bottles, jars, tins, cakes, and sweets. Look out for more details in the November edition of The Gateway



Visiting Bellringers

Beetham welcomed a large group of ringers from St Michael's, Kirkham on Saturday 7th September, and two days later our own ringers were delighted to ring here for a midweek wedding

We will next be hosting a band of ringers from Kirkby Malham at 3pm on Saturday 12th October

KENDAL SOUTH CHOIR
directed by Geoffrey Field

GLORIA!

Vivaldi Gloria
Rutter Requiem
Pergolesi Stabat Mater

Saturday 16th November, 7.30pm
St George's Church, Castle Street, Kendal

with
Ellie Blewitt (soprano)
Ellen Griffiths (mezzo-soprano)
Andy Plowman (organ)

Tickets £15 (under-18s free)
from choir members or at the door

kendalsouthchoir.weebly.com

making music

School Corner

We have had a wonderful start to our school year. We have extended our age range this year and now have places available for children who are 2 years and upwards. All of our children have settled in well to their new classes and are already enjoying the topics planned by the teachers. Pre School and Class 1 have been busy exploring the outside areas on our school site; using bikes and trikes; dressing up in new costumes and playing imaginative games inside the revamped Bungalow.

Class 2 have been getting to know their new classroom. Over the summer a wall has been installed across the classroom to reduce the noise from other areas of the school as well as improve energy efficiency. The classroom feels bright and spacious and is already making a difference to noise and concentration levels.

Class 3 have been out and about singing at Beetham Nurseries; raising awareness for Dementia Awareness through working with Home Instead. They have also begun their swimming sessions at Carnforth Pool.

We have welcomed Irene from STEM once again to Class 3. This time she developed understanding of renewable power, with the children completing experiments into wind power using fans as their source of energy. We are very grateful for all the work that STEM provide through their workshops the children always thoroughly enjoy them.

Each Friday we welcome our Stay and Play children and adults between 9 and 10. This week they baked Brownies for Class 1 and themselves to eat for their afternoon snack.

If you would like to join us for Stay and Play please come along on a Friday morning where there is always a cuppa waiting and lots of fun activities for the little ones.

We have places available in our 2 year old provision as well as some of our classes. If you want to come and see us in action then please contact us to make an appointment.

Best wishes, Abi Johnson



Beetham WI ~ Squirrels and Show

For our September meeting in The Wheatsheaf, we enjoyed a very informative and interesting talk by Bob Cartwright, the Deputy Chair of the Westmorland Red Squirrels. He explained about the background and work the charity undertake in making people aware of the threats to the red squirrels and what can be done to help them survive and thrive. More information can be found on their website: www.westmorlandredsquirrels.org.uk where members of the public can also report sightings of both red and grey.



the WI **Beetham WI**
will be meeting at
2 - 4 pm
in
The Wheatsheaf
on
Thursday 14th November, 2024
for a
A Talk from a member of the
Cosy Homes Team at
CAFS **Cumbria Action**
for Sustainability

Guests very welcome to join us
for a small charge which includes Tea/Coffee & Biscuits
For more information contact: The Secretary
email: beethamwi@gmail.com

Our Secretary, Jeanette, with other WI members of the Cumbria-Westmorland Federation, worked very hard before and during the week of the Westmorland Show to ensure the WI marquee was ready for showing the wide range of exhibits contributed by so many members. Congratulations to our Beetham WI members who managed to finish and exhibit their creative craft and baking items on time!

We will all be having a practical session during our 10th October meeting in The Wheatsheaf when we will be creating 'Iris Folding Cards'. Guests are welcome but we do need to know by Monday 7th October if you would like to join us. There is a £5 charge to cover materials and refreshments. Contact Jeanette, Beetham WI Secretary, at beethamwi@gmail.com

Heydays **LIVE-IN CARE**
Care & Support Services
Enjoy living independently
at home for longer
015395 52548
Your personalised alternative to residential care

- Remain at home close to friends, family & your local community
- Peace of mind that your trusted, fully-trained carer is with you day and night
- Full support from our professionally managed team with care plans & regular assessments

Contact our friendly team:
Call us: 015395 52548 | Email: info@heydayscare.co.uk
or visit our website: heydayscare.co.uk

Beetham Village Facebook
A dedicated facebook group
for Beetham village
Search for
"Beetham Village Cumbria"

Kent Estuary *Est. 1979*
24 Hours. Travel
Competitive Rates

Local family private hire company founded in 1979

All drivers, male and female, have level 2 nvq in road vehicle passenger driving and are fully licensed with SLDC.
We pride ourselves in having a friendly and reliable service

For a quote please contact us on
015395 62917 or
07974 108501

LEIGHTON HALL
APPLE DAY
FAMILY FUN DAY CELEBRATING
NATIONAL APPLE DAY
SUNDAY 20th OCTOBER 2024 10AM - 3PM
ACTIVITIES, TASTINGS, CRAFTS,
DEMONSTRATIONS,
STALLS, REFRESHMENTS,
MAKERS AND MARKETPLACE.
TICKETS MUST BE PREBOOKED AT
WWW.LEIGHTONHALL.CO.UK OR 01524 734474
ACCOMPANIED PRESCHOOL CHILDREN 0-4 YRS **FREE**
ACCOMPANIED PRIMARY SCHOOL CHILDREN 5-11 YRS **£2**
OVER 11 YEARS-ADULT **£4**
EVENT WILL TAKE PLACE COME RAIN OR SHINE
LEIGHTON HALL, CARNFORTH, JANCS, LA5 9ST

Kendal Rotary
2024-2025 Centenary Year

VOICE AND BRASS
Kendal Rotary Club
CENTENARY CHARITY CONCERT
with **K Shoes Male Voice Choir**
and **Burnside Brass**
FRIDAY OCTOBER 18th at 7 30PM
St Thomas's Church Kendal
Tickets: **£15** each, including light refreshments
Available from:
Arnold Greenwood, Kendal Rotary, Choir and Band members.
Trybooking <https://www.trybooking.com/uk/DSSL>
Sponsored by:
"The Talbot Family Trust"

HERON **MILL TOUR & DEMONSTRATION**
Friday 4th Oct, 11.30 - 1pm
BAKING WITH KATE
Wednesday 23rd Oct, 11am - 2pm
CRAFTING WITH ERIKA
Monday 7th Oct, 1 - 4pm
CRAFTERNOON
Tuesday 22nd Oct, 1 - 4pm
POWSOWDIE
Wednesday 30th Oct, 11am - 2pm
WRITE BY THE RIVER
Wednesday 16th Oct, 11am - 3.30pm
FOODIE FRIDAY
Friday 4th Oct, 1pm - 3pm
Heron Corn Mill, Mill Lane, Beetham, LA7 7PQ
015395 64271 - info@heronmill.org - www.heronmill.org

Quest Lecture Group
A friendly group, meeting at the
Athenaeum village hall, Leasgill, LA7 7ET
10 Oct ~ Peter Wade
'The Winter Gardens—Morecambe's sleeping giant'
24 Oct ~ Gary Johnston
'Minnie's Scrapbook: life in 19thC Barrow'
All meetings are on Thursdays, starting at 10:00am. Annual subscription for 12 meetings is £18. Guest tickets for individual meetings £2.50, tea/coffee included. No need to pre-book. Enquiries to Adrian Taylor: aptaylor@gmail.com 01539 564030

SIGHT ADVICE
SOUTH LAKES
Volunteer Drivers
Wanted
Freedom
Support others retain freedom and independence.
We need more drivers to transport visually impaired people, to enable them to access groups and other social events in the local area -
Flexible days and times to suit you.
Become part of our valued team and amazing organisation.
Contact Rosalind Melville,
Volunteer Coordinator for more information on
01539 769055
or email: rosalind@sightadvice.org.uk

Important message for advertisers

Now that Gateway is back to both paper and online circulation we aim to contact each advertiser individually for your ongoing requirements. Do please let us know if there are any details you would like us to change.

And to other local business, would you like to advertise? Annual costs can be as low as just £33! To book space call John on 015395 62648 or email j.d.lomax@btinternet.com

Collectable and contemporary
BOOKS BOUGHT
015395 35125
Single items or whole collections
Will travel to view (from Allithwaite)
P.B.F.A. member

LUNESDALE HOUSE
RESIDENTIAL
RETIREMENT HOME
Hale, nr Milnthorpe
015395 - 63293
Registered with The National Care
Standards Commission


The Wheatsheaf
BEETHAM
FOUNDED 1609
www.wheatsheafbeetham.com
stay@wheatsheafbeetham.com
015395 64652

Open
Wednesday
to
Sunday
11am 'til late


PLUGGED IN
ELECTRICIANS
Customers first - Transparent pricing
Clear communication
01524 932 524
pluggedinelectricians.co.uk

C. M. SIGNS
Your local time-served
sign-writing specialists
015395 - 63000

MARK ECCLES
ME Electrical Contractors
All aspects of electrical work undertaken
07866 510 079

Graham Pooley
WINDOW CLEANER
1 Castle Riggs, Kendal
01539 - 721981

Flowers for all occasions
Woodlands Nurseries
Crooklands
01539 567273

NEIL TAYLOR
Painter, Decorator
& Paperhanger
Tel: 015395 - 64411
Mobile: 07778 - 467521

IAN BRADSHAW
INTERIOR & EXTERIOR PAINTER
& DECORATOR
015395 62089
07968 390396

Gas & Oil Boiler,
Gas Fire Repairs & Maintenance

015395 - 63562
MARK N. SHAW

Chaplows Heating Services
Boiler Services
GAS OIL LPG

015395 - 63017
07831 - 223140

**Robb Home improvements
and Landscaping**
Specialising in fencing, stone walling,
paving, garden rooms, lawns and
water features
Bespoke garden design and build
Free estimates
Call 07954336176 or 07871878101

MARTIN
PAINTER & DECORATOR
07881 895909
01524 61834
martin.painting.decorating@gmail.com

TONY GIBSON
SPECIALIST IN:
- STONEMASONRY -
- PLASTERING -
- ALL ASPECTS
OF BUILDING -
015395 64702
07815 888 564
www.tgibsonbuilderscumbria.co.uk

HAIRSTOP
2b Mainstreet, Milnthorpe, LA77PN
HAIR SALON
015395 63586
www.hairstopmilnthorpe.co.uk

Lakeland & Lunesdale
Physiotherapy &
Sports Injury Clinic
Milnthorpe
015395 64727

clinic@physio-sportsinjuries.co.uk
www.physio-sportsinjuries.co.uk

Join The Friends
of Beetham Church
by picking up a form in church
or downloading from our
website, and supporting our
fundraising to maintain this
historic church

HIGHGATE
VETERINARY
CLINIC
01539 721344
www.highgatevets.com
173 Highgate, and Unit 1 Beezon Rd
Trading Estate, Kendal
Friendly, caring & professional team


LAKELAND HEARING
www.lakelandhearing.co.uk
✓ Phone calls
✓ Repairs to your hearing aids
✓ Battery sales ✓ Accessory sales
✓ Remote adjustments of your hearing aids*
Do get in touch and let us
know how we can help
01524 824594
info@lakelandhearing.co.uk
*subject to a compatible hearing aid

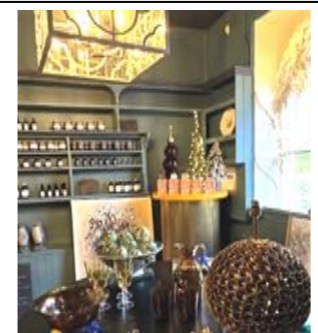
SOUTH LAKELAND AGE UK
For lunch club and exercise
class details go to
[www.ageuk.org.uk/
southlakeland/activities-
and-events](http://www.ageuk.org.uk/southlakeland/activities-and-events)
Helpline : 030 300 30003


T.T. CARPETS
RED BARN
HARMONY HILL
MILNTHORPE
015395 - 62898

L. M. Baverstock
Ophthalmic Opticians
The Square, Milnthorpe
015395 - 62633

Irene Taylor Hearing
- Specialist hearing aid advice
- Earwax removal by microsuction
- iPhone compatible hearing aids
- Invisible hearing aids
- Hearing protection for shooting,
motorcyclists & musicians
- TV & telephone accessories
- Home visits
Salt Pie Lane, Kirkby Lonsdale, LA6 2BH
015242 73589
Est. 1980 ~ Registered with hepc
www.irenetaylorhearing.co.uk

FOOTCARE AT HOME
Tracey Garrett BSc MInstChp
Nail trimming ~ Ingrown nails
Corns ~ Callus ~ Diabetic foot
Care and advice
For Home Visit tel 07766 167018



Edith Anice

Leslie welcomes you to her
interiors shop and café in the
Old Beetham Post Office

Café & Shop opening times-
Thursday, Friday &
Saturday 10.30am-4pm

HOUGHTONS 

HOME IMPROVEMENT CENTRE
Park Road, Milnthorpe
T: 015395 63904

Open 7 days
Trade & Retail
Large stock areas covering
Commercial & DIY Power Tools
Hardware
Electrical & Household Goods
Gardening Tools & Equipment
Timber, Plumbing, Glass, Key Cutting
Paints, Wallpapers & Decorating sundries
Paint Mixing Service
Gifts & Cards for all occasions

HALE GARAGE
CO

(Practical Automobile
Engineers)
Established 80 years
Main A6 Road,
Hale, LA7 7BH

New & Used Car Sales
Service & Repairs
Full Dealer Computerised
Diagnostics Equipment
MOT Testing, Body Repairs,
Tyres
Batteries, Exhausts &
all your Motoring needs
Free collection or
loan car service
015395 - 62173 / 62839

WOODSIDE WALKS
Dog Walking & Day Care Service

Fully Insured
GPS Collars
10 Yrs Experience
Countryside Walks
Contact Theo on 07880 237033
to discuss your requirements

PARKIN and JACKSON
Monumental Masons
New Memorials
Second Inscriptions, Repaints,
Regilds and Renovations

Visit the showroom on
14 APPLEBY ROAD, KENDAL LA9 6ES
Telephone: 01539 722838
Free estimates & brochure on request
www.parkinandjackson.co.uk
email: info@parkinandjackson.co.uk

Sustainable
Gardening Services
SOUTH LAKES

RHS QUALIFIED
WWW.WOODSIDEGARDENER.COM
INFO@WOODSIDEGARDENER.COM
07533623208 / 07557343508

FISHWICKS FUNERAL SERVICE
Established 1935
Beetham Hall Beetham
015395 63108
Independent Family Business
24hr service
www.fishwicksfunerals.co.uk

BEETHAM HALL CREMATORIUM
Established 2017
015395 65363
www.beethamhall.co.uk

 **Carnforth Chiropody**
"Helping you and your
feet go a long way"
Comprehensive professional, friendly and effective chiropody
& podiatry services. Expert help in our welcoming treatment
room, conveniently situated in Carnforth
Routine footcare & hygiene issues • Long term health conditions
Resolving pain and posture problems • Nail surgery
Web: www.carnforthchiropodist.co.uk
Telephone: 01524 730179 Mobile: 07725 300290
Address: 28 Langdale Road, Carnforth, Lancashire LA5 9AU

MOSSDALE SERVICE STATION

A6, Hale Moss
tel: 01524 781381
Petrol, Car Wash
TEXACO Nisa Store open
6am (Sunday 7am) - 8pm
Wines & Beers,
Fresh Produce,
Groceries, Hot &
Cold Drinks, National Lottery


The Gateway deadline
Items for the November
edition should be sent by
Monday 28th October
Please email articles to
jenny.marks@btinternet.com
View deadlines online at
beethamsmichaelandallangels.co.uk